

Skyline Targeted Method Editing

This tutorial will cover many of the features available in the Skyline Targeted Proteomics Environment for creating new instrument methods for Selected Reaction Monitoring (SRM also referred to as Multiple Reaction Monitoring - MRM) mass spectrometers. The Skyline support for creating documents from existing transition lists is covered in a separate tutorial.

In developing Skyline we aim to create a vendor-neutral platform for targeted proteomics investigation. From all Skyline documents, you will be able to export transition lists for SRM instruments from Agilent, Applied Biosystems, Thermo-Scientific and Waters. At the time of this writing, Skyline can also export native methods for Thermo-Scientific and Waters instruments. We expect to add native method support for Agilent and Applied Biosystems as well in the near future.

One of the great benefits of exporting your methods from a Skyline document is that you are assured the instrument output will import seamlessly for use in data analysis with Skyline, though this also is covered in other tutorials.

Understanding how to create a targeted proteomics method in Skyline is a critical starting point, however, a good reason to explore this tutorial.

Getting Started

To start this tutorial, download the following ZIP file:

<https://skyline.gs.washington.edu/tutorials/MethodEdit.zip>

Extract the files in it to a folder on your computer, like:

C:\Users\brendanx\Documents

This will create a new folder:

C:\Users\brendanx\Documents\MethodEdit

Now start Skyline, and you will be presented with a new empty document.

You could start editing this empty document in a number of ways, but first you can give Skyline more information about the proteins you will be working with. By giving Skyline this background information, you allow Skyline to help you create information rich methods more quickly.

Creating a MS/MS Spectral Library

Since the method you will create in this tutorial will be designed to measure yeast proteins, you will first create a MS/MS spectral library from part of a yeast data set downloaded from the Peptide Atlas on-line

data repository. You can do the same for any data set from Peptide Atlas, or you can just use the full SpectraST libraries supplied by Peptide Atlas. There are 4 large public sources of spectral libraries all supported by Skyline:

- MacCoss Lab (<http://proteome.gs.washington.edu/software/bibliospec/documentation/libs.html>)
- Peptide Atlas (<http://www.peptideatlas.org/speclib/>)
- National Institute of Standards and Technology (NIST) (<http://peptide.nist.gov/>)
- The Global Proteome Machine (GPM) (<ftp://ftp.thegpm.org/projects/xhunter/libs/>)

You can also create new spectral libraries in Skyline using other publicly available data, or peptide search results from your laboratory experiments. Skyline currently supports building libraries from the following search result formats:

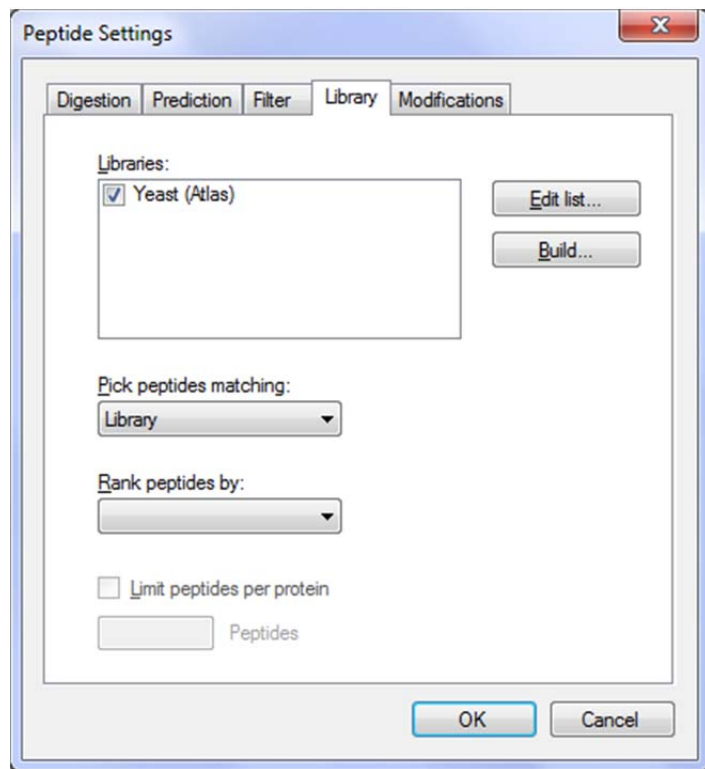
- Mascot (DAT files)
- Trans Proteomic Pipeline (pepXML and mzXML)
- X! Tandem (BioML XML)
- Myrimatch/IDPicker (ipdXML and mzXML)
- Spectrum Mill (exported pepXML and mzXML)

To start this tutorial, you can build your first BiblioSpec spectral library with Skyline by performing the following steps:

- On the **Settings** menu, click **Peptide Settings**.
- Click on the **Library** tab.
- Click on the **Build** button.
- In the **Name** field of the **Build Library** form, enter 'Yeast (Atlas)'.
- Click the **Browse** button.
- Navigate to the Library subfolder under the MethodEdit folder created earlier.
- Click the **Save** button.
- In the **Cut-off score** field, enter '0.95' as the minimum PeptideProphet score.
- In the **Lab Authority** field, enter 'peptideatlas.org'
[usually a unique Domain Name System (DNS) name controlled by your lab].
- Click the **Next** button.
- Click the **Add Files** button.
- Navigate to the Yeast_atlas subfolder under the MethodEdit folder.
- Double-click the interact-prob.pep.xml file in this folder.
- Click the **Finish** button.

You should see that Skyline has added the newly created 'Yeast (Atlas)' library to the Libraries list in the Library tab of the Peptide Settings form. The library build is performed as a background task, freeing you to continue working. If you look at the Skyline status bar, you can see progress status for the library build. This is a small data set, however, and the build will happen quickly. It may already have completed by the time you read this.

Click on the checkbox for 'Yeast (Atlas)' to tell Skyline to use this library in picking peptides and transitions. The Library tab should now look like this:



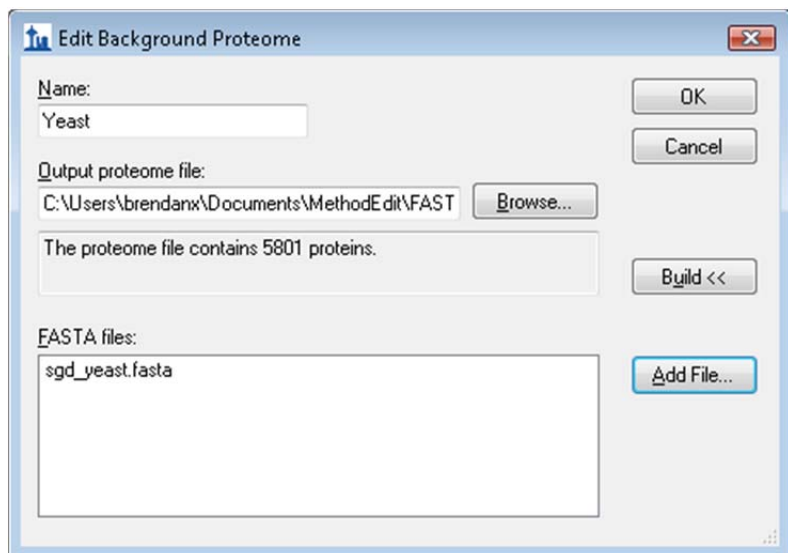
Creating a Background Proteome File:

You can also use FASTA sequence files to inform Skyline of the background matrix in which your experiment will take place. In Skyline, this is called the Background Proteome. It can be as broad or as narrow as you like, e.g. the entire organism FASTA for one or multiple organisms to 18 specific proteins you plan to spike into an otherwise blank matrix, or anywhere in between.

For this tutorial, you will use the complete FASTA file for yeast, which you can do by performing the following steps before clicking the OK button in the Peptide Settings form:

- In the **Peptide Settings** form, click the **Digestion** tab.
- From the **Background proteome** drop-list, choose **<Add...>**.
- Click the **Build** button in the **Edit Background Proteome** form.
- Click the **Browse** button.
- Navigate to the FASTA subfolder of the MethodEdit folder.
- In the **File name** field, enter 'Yeast'.
- Click the **Save** button.
- Click the **Add File** button.
- Navigate to the FASTA subfolder of the MethodEdit folder.
- Double-click the sgd-yeast.FASTA file.

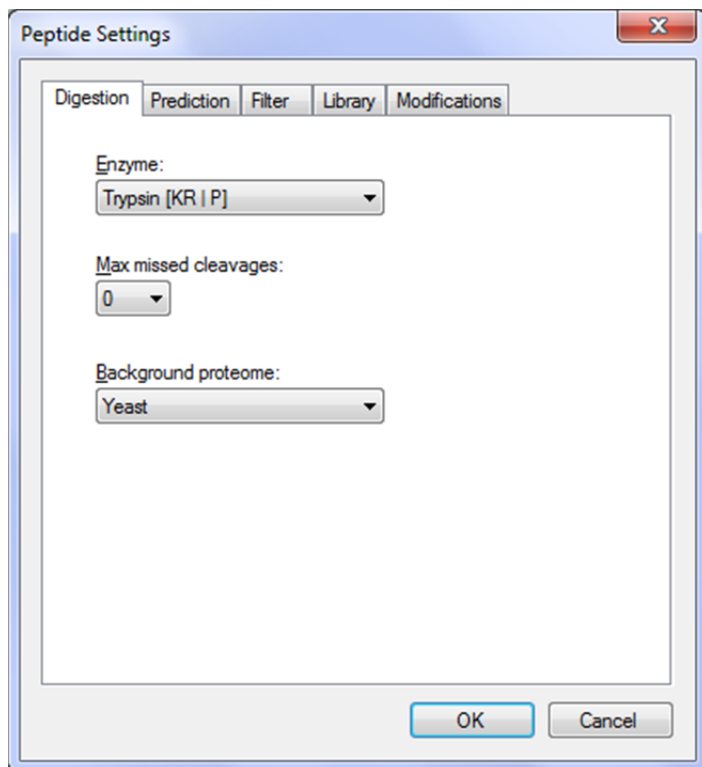
Skyline will scan the 5801 protein sequences in this file and create an initial, undigested background proteome file at the specified location. The Background Proteome form should look like this:



The 'Edit Background Proteome' dialog box is shown. It has a title bar with a blue icon and a close button. The main area contains the following fields and buttons:

- Name:** A text box containing 'Yeast'.
- Output proteome file:** A text box containing 'C:\Users\brendanx\Documents\MethodEdit\FAST' and a 'Browse...' button.
- The proteome file contains 5801 proteins.** A text box.
- FASTA files:** A text box containing 'sgd_yeast.fasta' and an 'Add File...' button.
- Buttons:** 'OK', 'Cancel', 'Build <<', and 'Add File...'.

Click the **OK** button to return to the **Digestion** tab of the **Peptide Settings** form, which should now look like this:



The 'Peptide Settings' dialog box is shown with the 'Digestion' tab selected. It has a title bar with a blue icon and a close button. The main area contains the following fields and buttons:

- Enzyme:** A dropdown menu showing 'Trypsin [KR | P]'.
- Max missed cleavages:** A dropdown menu showing '0'.
- Background proteome:** A dropdown menu showing 'Yeast'.
- Buttons:** 'OK' and 'Cancel'.

Skyline provides many editable lists like the two you just modified. The Enzyme list at the top of the Digestion tab is another, and there are others on every tab of the Peptide Settings forms, which you can explore later. For now, click the **OK** button to commit these changes, and return to the document.

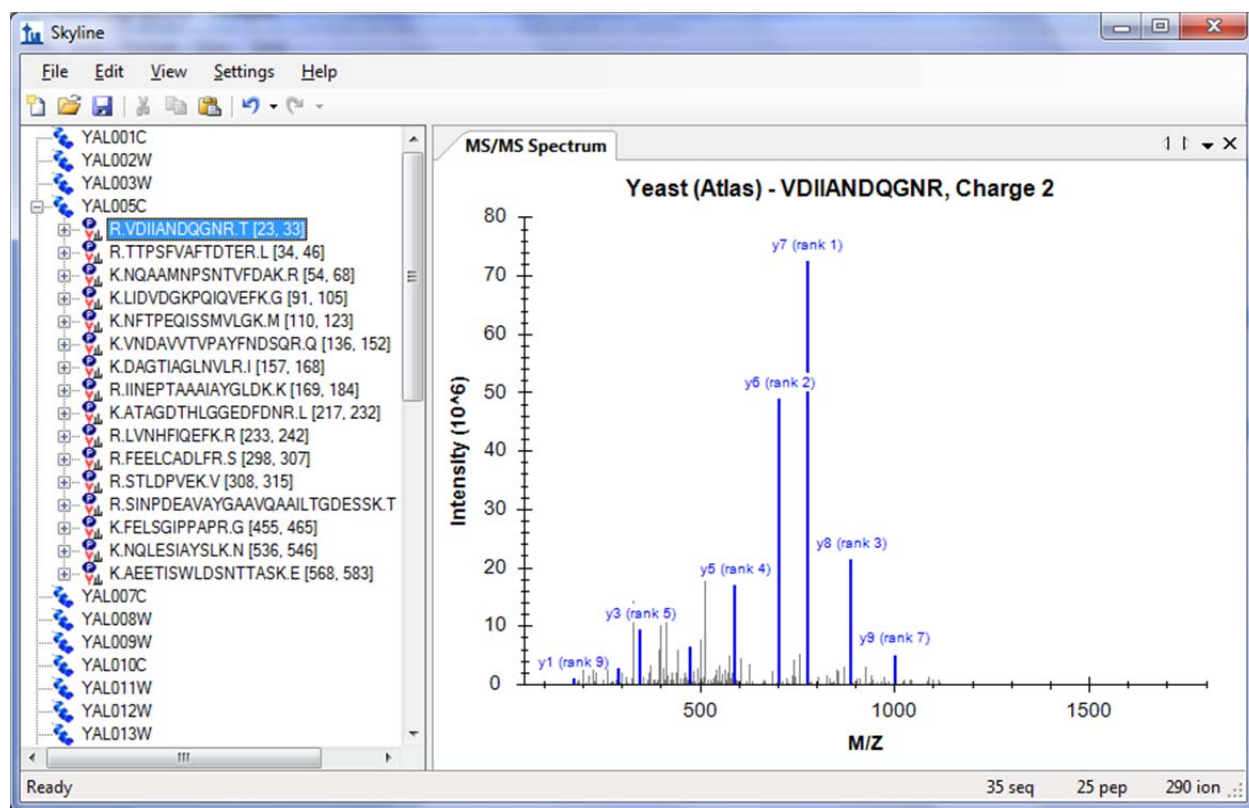
Skyline begins digesting the background proteome with the active protease enzyme, in this case Trypsin. Progress is reported in the status bar, and you can continue work. While this digestion is occurring, we can begin adding proteins to the document to better understand how the new spectral library impacts the peptide and transition choices Skyline makes.

Pasting FASTA Sequences

The first method added to Skyline for specifying proteins of interest was the ability to paste full FASTA sequence text directly into the document. To use this method, perform the following steps:

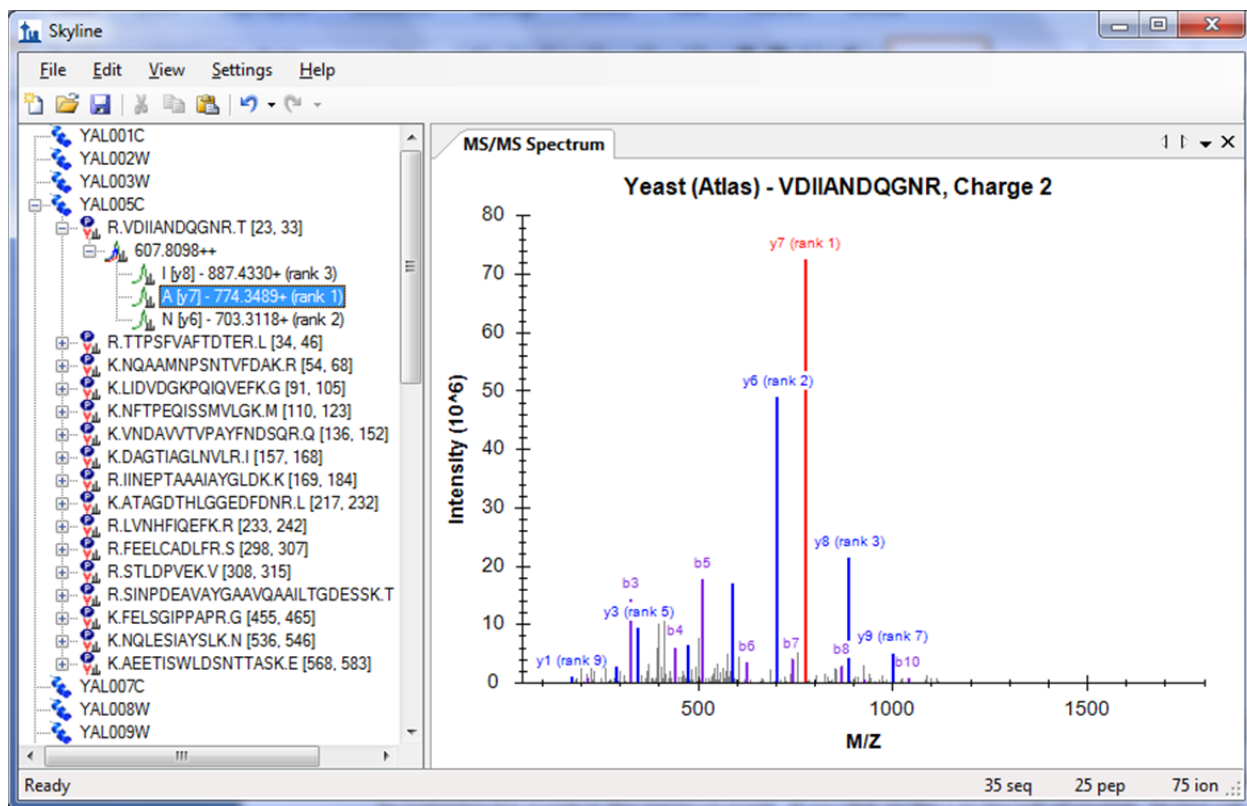
- Use the Windows **Notepad** application to open the 'Fasta.txt' file in the FASTA subfolder of the MethodEdit folder.
- On the **Edit** menu in Notepad, click **Select All** (ctrl-A).
- On the **Edit** menu in Notepad, click **Copy** (ctrl-C).
- Switch back to Skyline.
- On the **Edit** menu, click **Paste** (ctrl-V).
- Press the down arrow key until the first pasted peptide is selected.

This should leave Skyline in the following state:



On the **View** menu, choose **Ion Types**, and then click **B**, to make Skyline highlight the b-ions for this peptide in purple in the spectrum graph. Click on the + to the left of the peptide sequence displayed, to

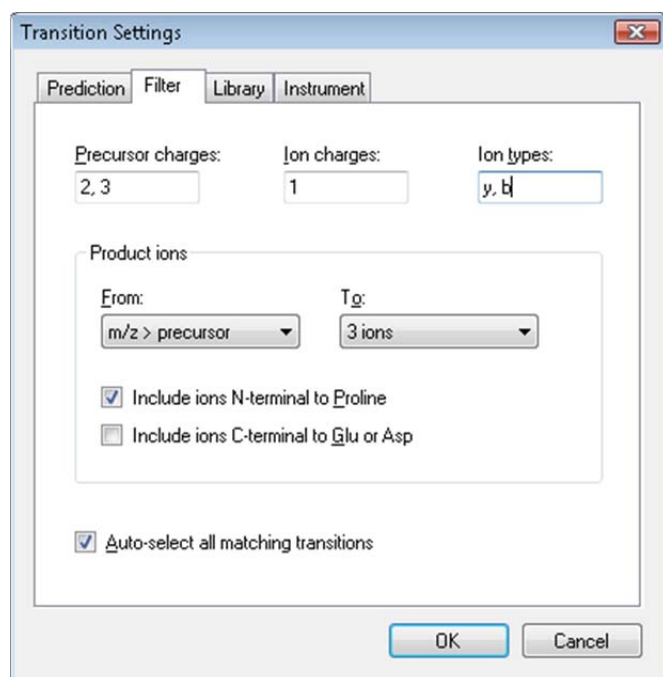
show the precursor m/z and product m/z transitions Skyline has picked to monitor for this peptide. Press the down-arrow key to move the selection to the transition assigned '(rank 1)'. Skyline highlights ions in the graph as you select the corresponding transitions to present the following view:



By default, Skyline has only chosen the 3 most intense charge 1 product y-ions as the transitions it will measure for the charge 2 precursor. All this may be adjusted, however. To change the settings from their default values, perform the following steps:

- On the **Settings** menu, click **Transition Settings**.
- Click the **Filter** tab.
- In the **Precursor charges** field, change the '2' to '2, 3'.
- In the **Ion charges** field, make sure the value is '1'.
- In the **Ion types** field, change the 'y' to 'y, b'.

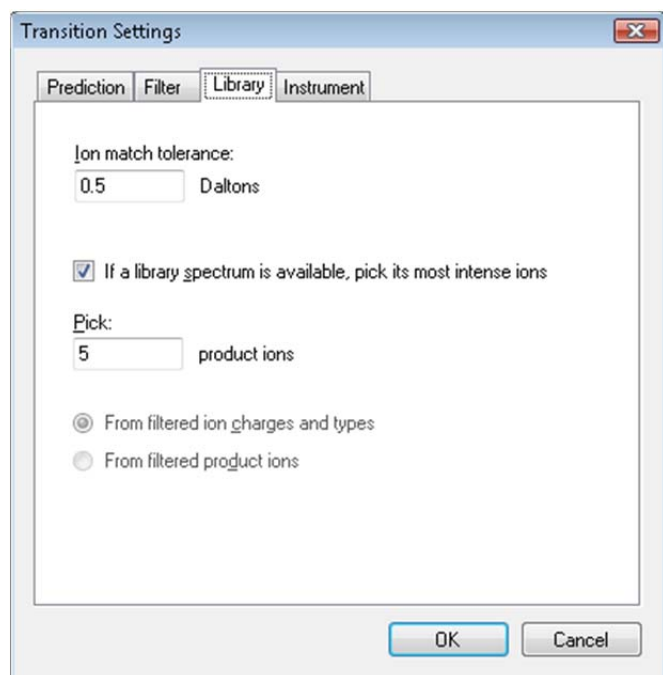
The **Transition Settings** form should look like:



The image shows the 'Transition Settings' dialog box with the 'Prediction' tab selected. The 'Precursor charges' field contains '2, 3', 'Ion charges' contains '1', and 'Ion types' contains 'y, b'. The 'Product ions' section has 'From:' set to 'm/z > precursor' and 'To:' set to '3 ions'. There are two checkboxes: 'Include ions N-terminal to Proline' (checked) and 'Include ions C-terminal to Glu or Asp' (unchecked). At the bottom, 'Auto-select all matching transitions' is checked. 'OK' and 'Cancel' buttons are at the bottom right.

- Click the **Library** tab.
- In the **Pick** field, change '3' to '5' **product ions**.

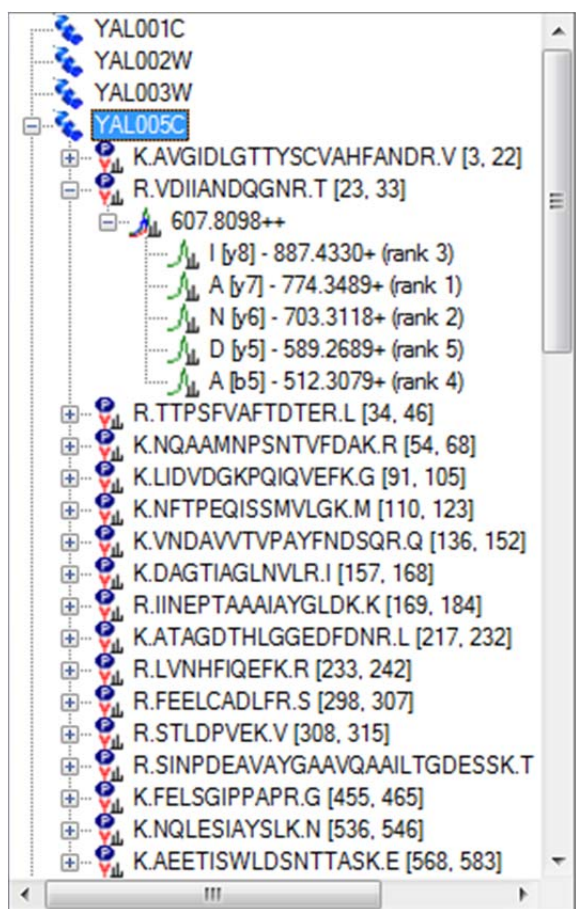
The **Transition Settings** form should look like:



The image shows the 'Transition Settings' dialog box with the 'Library' tab selected. The 'Ion match tolerance' is set to '0.5 Daltons'. The checkbox 'If a library spectrum is available, pick its most intense ions' is checked. The 'Pick:' field is set to '5 product ions'. There are two radio buttons: 'From filtered ion charges and types' (selected) and 'From filtered product ions' (unselected). 'OK' and 'Cancel' buttons are at the bottom right.

- Click the **OK** button.

The Skyline document tree should update to look like the following:



Skyline has added the rank 4 and rank 5 ions for the VDIIANDQGNR peptide, including its b5 ion. A new peptide has been added as the first peptide in the YAL005C protein. By expanding it, you can see that it is a peptide for which the new spectral library contains only a charge 3 spectrum-peptide match, while the library clearly does not contain a charge 3 spectrum for the VDIIANDQGNR peptide. The library peptide settings still direct Skyline to choose only precursors for which the spectral library contains a matching spectrum. You can expand the LIDVDGKPKQIQVEFK peptide to see an example of a peptide where both charge 2 and charge 3 spectra were found in the spectral library.

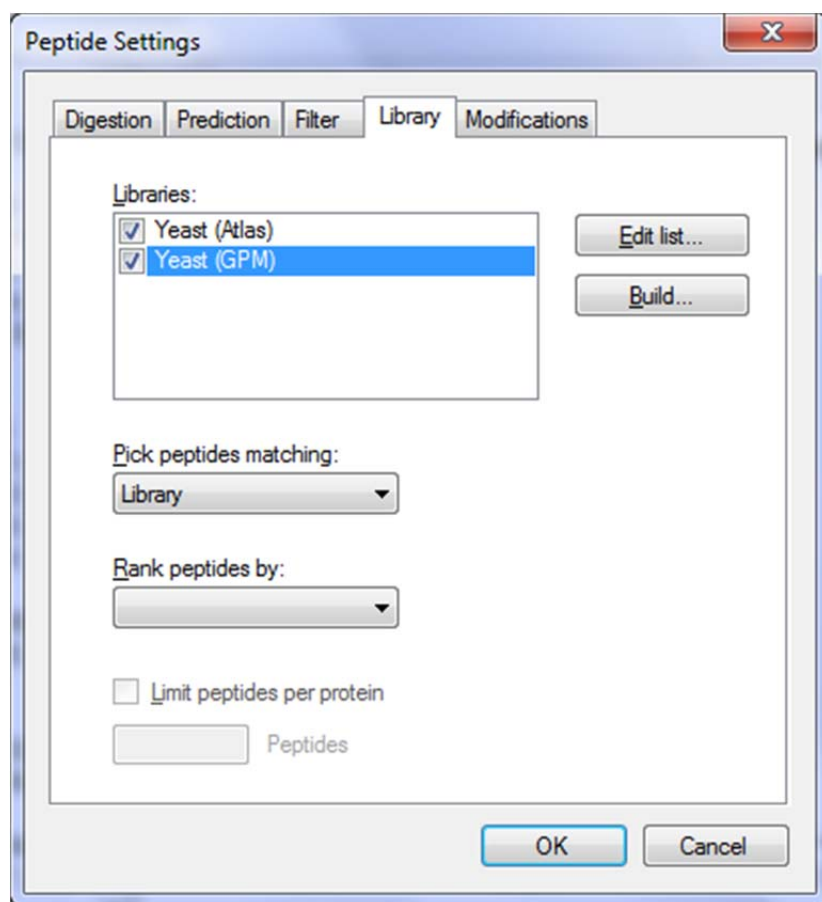
Using a Public Spectral Library

The new spectral library contains a lot of matches for the YAL005C protein, but because it was built from such a small data set many proteins show no peptides at all. Skyline is not, however, limited to using just a single spectral library. You can, for example, add the publicly available library for Yeast from the GPM. The yeast library from NIST is more extensive, but it was too large to include with this tutorial. To add the GPM library included in the tutorial ZIP file, perform the following steps:

- On the **Settings** menu, click **Peptide Settings**.
- Click the **Library** tab.

- Click the **Edit List** button.
- Click the **Add** button in the Edit Libraries form.
- In the **Name** field of the **Edit Library** form, enter 'Yeast (GPM)'.
- Click the **Browse** button.
- Navigate to the Library subfolder of the MethodEdit folder.
- Double-click the yeast_cmp_20.hlf file.
- Click the **OK** button in the **Edit Library** form.
- Click the **OK** button in the **Edit Libraries** form.
- In the **Libraries** list, check the newly created 'Yeast (GPM)' item.

The Peptide Settings form should now look like the following:



Since Skyline can only choose a single spectrum to inform its product-ion decisions, and the value by which to rank these matches remains blank in the Rank peptides by field, the libraries will be searched in the order they appear in the list. Skyline will use the first spectrum match it finds. Click the **OK** button to see this in action.

Once the library is loaded, Skyline updates the document to include a lot of new peptides. If you select peptides and peptide precursors that were already present before the GPM library was added, you can

see that the spectrum chart title still attributes the spectra to the 'Yeast (Atlas)' library. The spectrum chart for new peptides and peptide precursors, however, displays 'Yeast (GPM)' in the title.

NOTE: The GPM libraries unlike all other formats, store only the 20 most intense MS/MS peaks. You can make your own judgment of how well you think the stored spectra actually match the spectra they claim to, but you should do so with full knowledge of why so few peaks are displayed, compared with the unfiltered spectra in other libraries.

Limiting Peptides per Protein

Some of the peptides now have quite a lot of peptide precursors to measure. You might really want to measure them all before you start refining your document, a process covered in another tutorial. In this tutorial, suppose you want to somehow limit the number of peptides you measure for each protein.

In the future, we hope to add predictive algorithms to Skyline that will allow this type of peptide ranking without experimental data. At the moment, however, the only way to limit peptides per protein without resorting to manually picking the peptides yourself is to use a ranking value supplied by a spectral library. Unfortunately, the BiblioSpec library built in this tutorial and the public library from the GPM do not share a comparable score. This means you will also have to uncheck one of the libraries to use a ranking score.

Perform the following steps to limit the peptides per protein in the current document:

- On the **Settings** menu, click **Peptide Settings**.
- Uncheck the 'Yeast (Atlas)' library. (The **Library** tab should still be active.)
- From the **Rank peptides by** drop-list, choose **Expect**.
- Check the **Limit peptides per protein** checkbox.
- In the **Peptides** field, enter the number '3'.
- Click the **OK** button.

You should have many fewer peptides now. You can now also get rid of the empty proteins by choosing **Refine** from the **Edit** menu, and then clicking **Remove Empty Proteins**.

Now the tutorial returns to the background proteome file you created, and how it also can be used to add information to the peptides and proteins you are working with as you edit your document.

Inserting a Protein List

Suppose you are working with a list of proteins. You may have the IDs used to identify the proteins in your FASTA file, but you do not want to go through the FASTA file pasting each sequence one by one. Since you have set up a background proteome, all Skyline needs is a line-separated list of protein IDs from the FASTA file you used to create the background proteome.

To add a list of new proteins to the current document perform the following steps:

- Use the Windows **Notepad** application to open the 'Protein List.txt' file in the FASTA subfolder of the MethodEdit folder.
- On the **Edit** menu in Notepad, click **Select All** (ctrl-A).
- On the **Edit** menu in Notepad, click **Copy** (ctrl-C).
- Switch back to Skyline.
- Select the blank element at the end of the document.
- On the **Edit** menu, choose **Insert**, and then click **Proteins**.
- Press ctrl-V to paste from the clipboard.

Skyline adds the list of proteins to the Protein List grid, and assigns the Description and Sequence field values found for the IDs in the background proteome, so that the form looks like:

Name	Description	Sequence
YDL227C	HO SGDID:S000002386, Chr IV from 48032-462...	MLSENTTILMANGEIKDIANVTANSYVMCADGS...
YDL229W	SSB1 SGDID:S000002388, Chr IV from 44066-4...	MAEGVFQGAIGIDLTTYSCVATYESSVEIIANE...
YDL230W	PTP1 SGDID:S000002389, Chr IV from 42701-4...	MAAAPWYIRQRDITLLGKFKFIQNGEDGRLRE...
YDL231C	BRE4 SGDID:S000002390, Chr IV from 42245-3...	MKRYERDRSPTPDIVKGSYSQTSLSRLHEL...
YDL233W	YDL233W SGDID:S000002392, Chr IV from 367...	MYQGPPQPPQAVPMPYIVNNNTPPYPNGNIN...
YDL234C	GYP7 SGDID:S000002393, Chr IV from 36478-3...	MSKILFCKSKVFLHPTSDARDNIAGFLLLTLEAN...
YDL236W	PHO13 SGDID:S000002395, Chr IV from 32296...	MTAQGGVPIKITNKEIAQEFLDKYDTFLFDCDG...
YDL237W	YDL237W SGDID:S000002396, Chr IV from 306...	MLGLKGCLTILIGYIACALFSSRGRNPSLTD...
YDL238C	GUD1 SGDID:S000002397, Chr IV from 30454-2...	MTKSDLLFDKFNDKHGKFLVFFGTVDTPKLGE...
YDL239C	ADY3 SGDID:S000002398, Chr IV from 28775-2...	MNHWLAFNLKPESLKEQNSDCDQQGEMRHW...
YDL240W	LRG1 SGDID:S000002399, Chr IV from 22823-2...	MIQNSAGYRSLNTASPMYVQVKNQKKICARCN...
YDL243C	AAD4 SGDID:S000002402, Chr IV from 18566-1...	MGSMNKEQAFELDAFYEAGGNCIDTANSYQN...
YDL244W	THI13 SGDID:S000002403, Chr IV from 16204-1...	MSTDKITFLLNWQPTYHIPIFLAQTKGYFKEQ...
YDL245C	HXT15 SGDID:S000002404, Chr IV from 13360...	MASEQSSPEINADNLNSSAADVHVQPPGEKE...
YDL246C	SOR2 SGDID:S000002405, Chr IV from 9756-86...	MSQNSNPAVVLEKVGDAIEQRPIPTIKDPHYVK...
YDL247W	MPH2 SGDID:S000002406, Chr IV from 5985-78...	MKNLSFLINRRKENTSDSNVYPGAKSHEPSW...
YDL248W	COS7 SGDID:S000002407, Chr IV from 1802-29...	MKENEVKDEKSDVLSFKQLESQKIVLPQDLFR...
▶*		

Click the **Insert** button to add these proteins to the end of the document. Many of them have no peptides matching spectra in the GPM library. Again, on the **Edit** menu, choose **Refine**, and then click **Remove Empty Proteins** to remove the proteins with no peptides matching library spectra.

Inserting a Peptide List

There are two ways to insert a list of peptides into a Skyline document, and they have the following results:

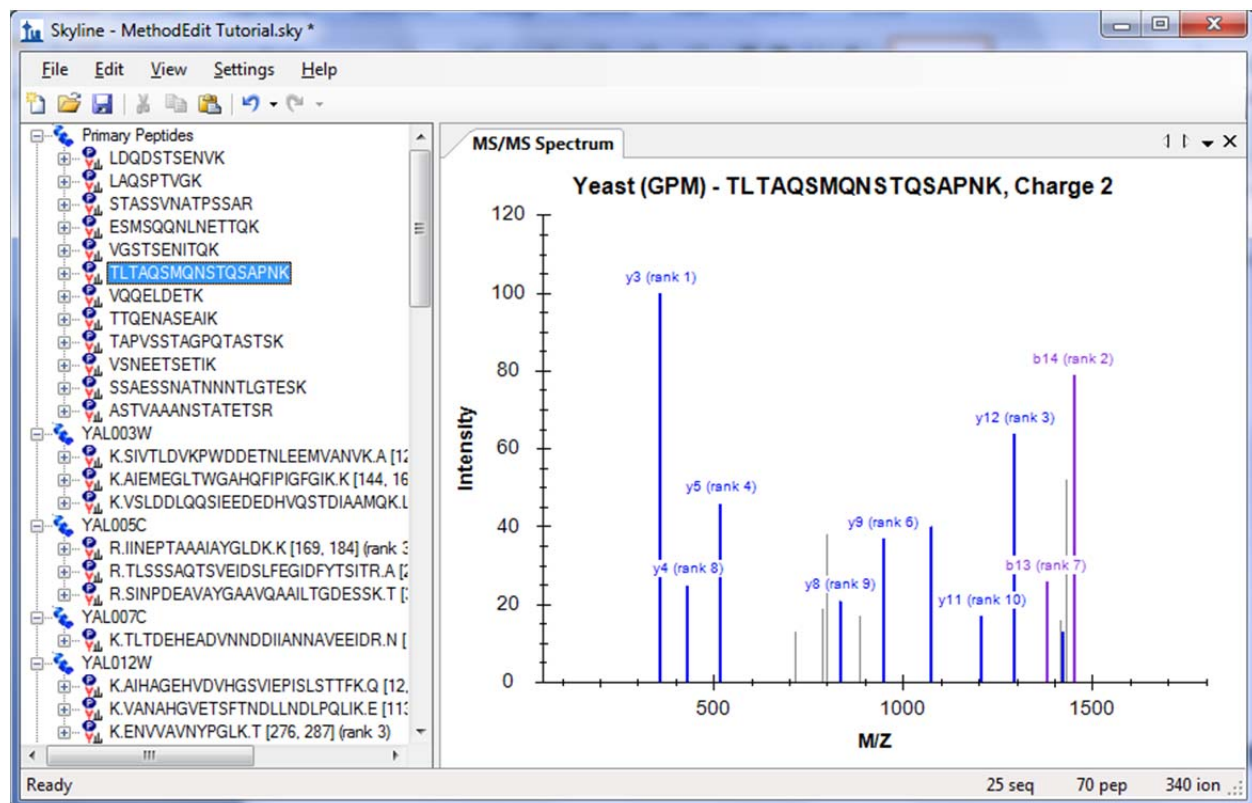
1. A list of peptides separate from any protein information
2. Each peptide associated with a specific protein

To achieve the first result, perform the following steps:

- Use the Windows **Notepad** application to open the 'Peptide List.txt' file in the FASTA subfolder of the MethodEdit folder.
- On the **Edit** menu in Notepad, click **Select All** (ctrl-A).
- On the **Edit** menu in Notepad, click **Copy** (ctrl-C).
- Switch back to Skyline.
- Select the first protein in the document.
- On the **Edit** menu, click **Paste** (ctrl-V).

Skyline adds the complete list of peptides to a single new peptide list element in the document, named 'peptides1'. You can rename the list now by simply typing the name you prefer, for example 'Primary Peptides'.

The GPM library has spectra for all of these peptides, which you can review by pressing the down-arrow key to select the pasted peptides. The Skyline document should now look something like this:



To insert the same list so that each peptide is associated with its respective protein in the background proteome, you need to use the Insert Peptide List form. Perform the following steps to do this now:

- First click the **Undo** button in the toolbar twice (ctrl-Z, ctrl-Z).
- On the **Edit** menu, choose **Insert**, and then click **Peptides**.
- Press ctrl-V to paste from the clipboard.

Skyline populates the protein fields for each peptide to present the form looking like:

Peptide Sequence	Protein Name	Protein Description
LDQDSTSENVK	YIL075C	RPN2 SGDID:S000001337, Chr IX from 220697-217860, reverse compl...
LAQSPTVGK	YGL234W	ADE5,7 SGDID:S000003203, Chr VII from 56482-58890, Verified ORF, ...
STASSVNATPSSAR	YEL032W	MCM3 SGDID:S000000758, Chr V from 86937-89852, Verified ORF, "P...
ESMSQQNLNETTQK	YFL038C	YPT1 SGDID:S000001856, Chr VI from 55985-55365, reverse complem...
VGSTSENIQK	YOR204W	DED1 SGDID:S000005730, Chr XV from 722911-724725, Verified ORF...
TLTAQSMQNSTQSAPNK	YOR153W	PDR5 SGDID:S000005679, Chr XV from 619840-624375, Verified ORF...
VQQELEDK	YKL196C	YKT6 SGDID:S000001679, Chr XI from 75539-74937, reverse complem...
TTQENASEAIK	YAL035W	FUN12 SGDID:S000000033, Chr I from 76428-79436, Verified ORF, "G...
TAPVSSTAGPQTASTSK	YDR233C	RTN1 SGDID:S000002641, Chr IV from 930351-929464, reverse compl...
VSNEETSEIK	YCR053W	THR4 SGDID:S000000649, Chr III from 216692-218236, Verified ORF, ...
SSAESSNATNNTLGTESK	YBR086C	IST2 SGDID:S000000290, Chr II from 423035-420195, reverse comple...
ASTVAAANSTATETSR	YML057W	CMP2 SGDID:S000004521, Chr XIII from 160180-161994, Verified ORF...

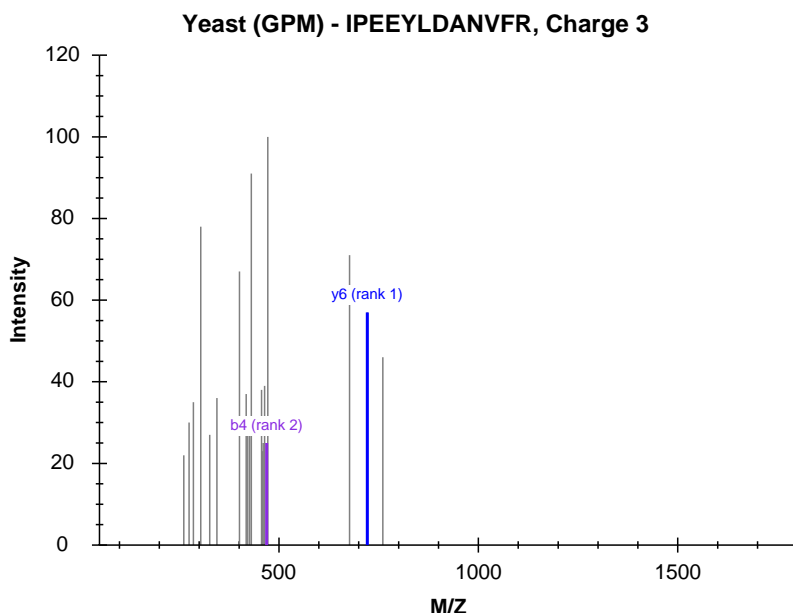
Click the **Insert** button to insert the peptides into the document.

Simple Refinement

At this point you have added 70 peptides to the document without doing any confirmation further than that the GPM yeast library contains a spectrum for each. To have a look at a peptide where the library spectrum seems like a particularly poor match for what this document is trying to measure, do the following:

- On the **Edit** menu, click **Find ...** (ctrl-F).
- Enter 'IPEE' in the **Find what** field.
- Click the **Find Next** button.

This spectrum shows only 1 matching y-ion and 1 matching b-ion, and looks like:

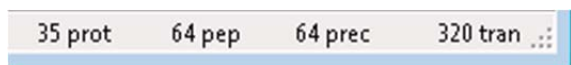


Measuring these two ions is unlikely to produce useful information about this peptide.

To remove all peptides for which the library spectrum failed to provide the desired 5 product ions, perform the following steps:

- On the **Edit** menu, choose **Refine**, and then click **Advanced**.
- In the **Min transitions per precursor** field, enter the number '5'.
- Click the **OK** button.

The status bar indicators at the bottom-right corner of the Skyline window show that the number of peptides has been reduced from 70 to 64:



Checking Peptide Uniqueness

Another thing you might want to check is how unique the chosen peptides are to the proteins you are trying to measure. Unfortunately, we have found that FASTA sequence files are frequently redundant enough that it would be unwise to simply remove all peptides which are not unique to a single sequence in the background proteome. Many peptides belong to multiple protein homologues of a single gene model.

Skyline does, however, offer a form for inspecting uniqueness of the peptides for each protein in the document. Perform the following steps to review the last 2 proteins in the document you are editing:

- Select the last protein in the document.
- On the **Edit** menu, click **Unique Peptides**.

Skyline displays the **Unique Peptides** form with the following information:

	Included	Peptide	YDR342C	YDR343C	YEL069C	YJR158W	YNR072W
▶	<input checked="" type="checkbox"/>	SASWVPPSR	<input checked="" type="checkbox"/>	<input checked="" type="checkbox"/>	<input checked="" type="checkbox"/>	<input checked="" type="checkbox"/>	<input checked="" type="checkbox"/>

Protein Name: YDL245C

Description: HXT15 SGDID:S000002404, Chr IV from 13360-11657, reverse complement, Verified ORF, "Protein of

Sequence: TIFKSVGLTDGFETSMVLTGVNFFSTIIAVMVVDKIGRRKCLLFGAASMMACMVIFASIGVKCLYPHGQD
 GPSSKGAGNAMIVFTCFYIFCFATTWAPVAYIVVAESFPSKVSKAMSISTAFNWLWQFLIGFTFPFIT
 GSIHFYGYVFGCLVAMFLYVFFFLPETIGLSLEEIQLLYEEGIKPWK **SASWVPPSR**RGASSRETEAK
 KKSWEVLKFPKSFN

OK Cancel

A close review of these 6 proteins shows that some are similar to each other, but there is certainly enough variation that this one peptide gives little confidence of measuring the protein of interest. You can view the protein sequence for each protein by selecting its column in the grid view.

Close the Unique Peptides form, and press the Delete key to remove this protein from the document.

Now repeat the same steps for the new last protein. Skyline shows that the one peptide chosen for this protein also maps to multiple proteins, in this case 4, but they are much more similar. You may want to keep this one. Click the **Cancel** button.

Direct Document Editing

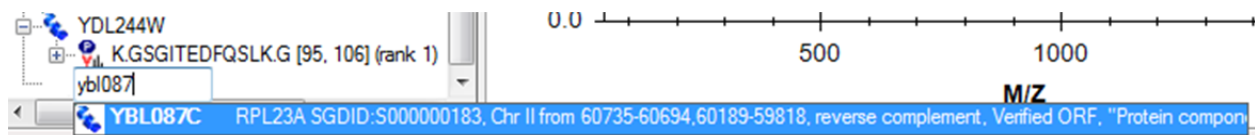
You have already seen that it is possible to delete items in the document using the delete key, as well as to change the name of a peptide list by typing over the existing name. In this section, you will be introduced to a few more direct document editing features that allow you to quickly modify the proteins, peptides, precursors and transitions you wish to measure.

Protein Name Auto-Completion

With a background proteome defined, you can get help in adding proteins and peptides simply by typing on the blank element at the end of the document. To add a protein by name, do the following:

- Select the blank element at the end of the document.
- Type 'ybl087'

Skyline will offer to complete this by adding a protein as shown below:

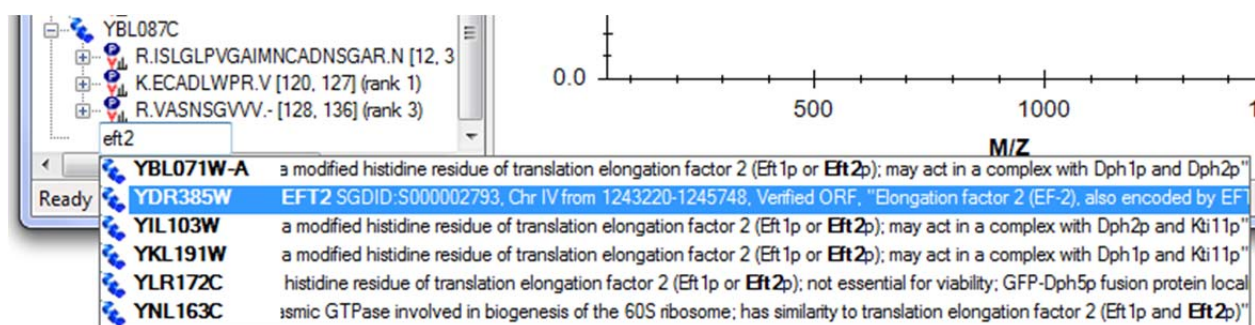


Press the Enter key to add the protein to your document.

Protein Description Auto-Completion

Skyline will also search the description text for the protein sequences from a FASTA file. To find and add a protein based on its description, do the following:

- Type 'eft2'
- Press the down-arrow key twice to select the second protein listed, as shown:



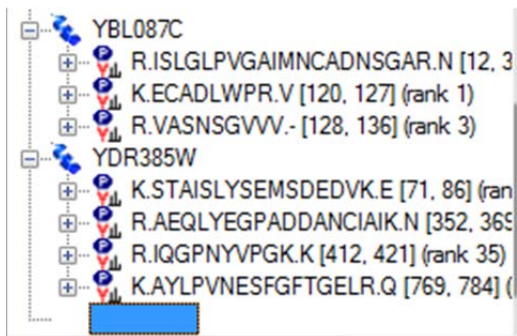
Press the Enter key to add the protein to your document.

Peptide Sequence Auto-Completion

A third auto-completion option is to begin typing a peptide sequence, and Skyline will help identify the peptide and the protein or proteins that contain it. To find and add a peptide by its sequence, do the following:

- Press Caps-Lock.
- Type 'IQGP'.
- When Skyline shows the peptide IQGPNYVPGK, press the down-arrow key to select it.
- Press the Enter key.

The peptide is added to the document, but it is added to the existing protein YDR385W, just above the final blank element. The added proteins should now look like:



Pop-up Pick-Lists

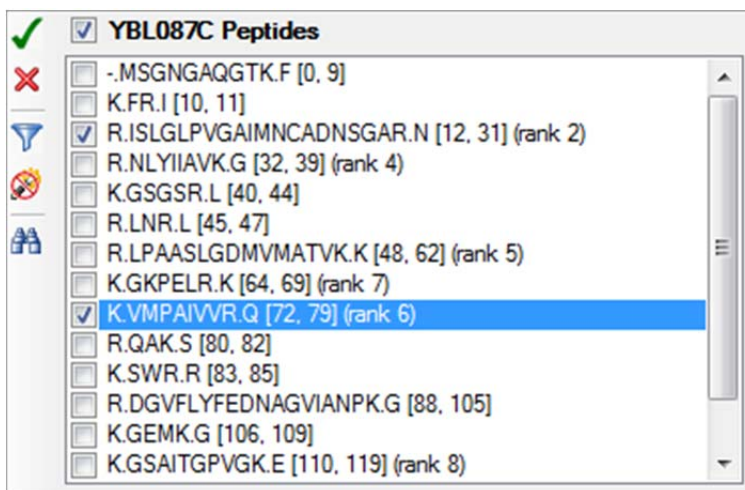
Once you have added proteins to your document, you can also use the Skyline pop-up pick-lists to modify the peptides, precursors and product ions you will target. You can add another peptide to the YBL087C protein by doing the following:

- Move the mouse cursor over the YBL087C protein until a drop-arrow appears beside the name.
- Move the mouse cursor over the drop arrow until the cursor image changes to a hand.
- Click the left mouse button.

Skyline will show a pop-up pick-list that is initially filtered, and shows only the set of peptides it has already added to the document. You could uncheck any of these to have the same effect as using the Delete key to delete peptides from this protein. Instead, you can add a new peptide by doing the following:

- Click the button with the funnel image to get an unfiltered list.
- Check the peptide with the suffix '(rank 6)'.

This should leave the pick-list looking like:



Press the Enter key or click the button with the green check image to commit the change to your document.

All items in the document that support sub-lists will display the same kind of pick-list. To change the product ion transitions for a peptide precursor, do the following:

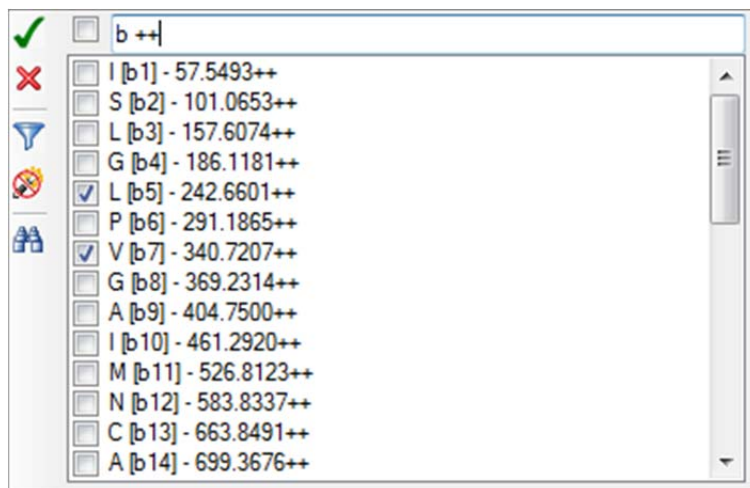
- Expand the first peptide in the YBL087C protein (ISLGLP...) by clicking the + to the left of the peptide sequence.
- Move the mouse cursor over the 672.6716+++ precursor until a drop-arrow appears beside the name.
- Move the mouse cursor over the drop arrow until the cursor image changes to a hand.
- Click the left mouse button.

The entire unfiltered list of possible product ions will appear in a pop-up pick-list. Suppose you had some reason to believe this particular precursor would be better measured with only b-ions, and in fact you want to exchange the current 2 y-ions for 2 doubly charged b-ions. To do this, perform the following steps:

- Uncheck the two y-ions currently in view (y9 and y6).
- Click on the button with the binoculars image to show the find field.
- Type 'b ++' (b-space-++) to filter the list to only items containing a b and ++.
- Check the doubly charged b5 and b7 ions.

Note: This is just an example, and these ions were not found in the MS/MS spectrum.

The pick-list should now look like:



Press the Enter key or click the button with the green check image to commit the change to your document.

Bigger Picture

Sometimes it helps to be able to see the information in your document in a broader context. You may have noticed this already, as you moved the mouse over the document, but if not, hover the mouse cursor now over some of the elements in the document tree, and Skyline will present data tips like the ones shown below. In these tips, the selected element is highlighted in red, elements in the document in blue, and bold is used for elements which match the filter but are not included in the document.

RPL23A SGDID:S000000183, Chr II from 60735-60694,60189-59818, reverse complement, Verified ORF, "Protein component of the large (60S) ribosomal subunit, identical to Rpl23Bp and has similarity to E. coli L14 and rat L23 ribosomal proteins"

YER117W RPL23B SGDID:S000000919, Chr V from 396765-396806,397278-397649, Verified ORF, "Protein component of the large (60S) ribosomal subunit, identical to Rpl23Ap and has similarity to E. coli L14 and rat L23 ribosomal proteins"

MSGNGAQGTFKFR**ISLGLPVGAIMNCADNSGAR**NLYIIAVKSGSRLNRLPAASLGDMVMATVKKGKPELRKK**VMPAIVVRQAKS**
 WRRRDGVFLYFEDNAGVIANPKGEMKGSATGPVGK**ECADLWPRVASNSGVV**

Modified	ISLGLPVGAIMNC[+57]ADNSGAR					
Precursor charge	3					
Precursor m/z	672.6716					
Precursor m+h	2016.0001					
Expect	2.884318E-11					
Processed intensity	146.0582					
b++	b+	#	AA	#	y+	y++
57.55	114.09	1	I			
101.07	201.12	2	S	19	1902.92	951.96
157.61	314.21	3	L	18	1815.88	908.45
186.12	371.23	4	G	17	1702.80	851.90
242.66	484.31	5	L	16	1645.78	823.39
291.19	581.37	6	P	15	1532.69	766.85
340.72	680.43	7	V	14	1435.64	718.32
369.23	737.46	8	G	13	1336.57	668.79
404.75	808.49	9	A	12	1279.55	640.28
461.29	921.58	10	I	11	1208.51	604.76
526.81	1052.62	11	M	10	1095.43	548.22
583.83	1166.66	12	N	9	964.39	482.70
663.85	1326.69	13	C	8	850.35	425.68
699.37	1397.73	14	A	7	690.32	345.66
756.88	1512.75	15	D	6	619.28	310.14
813.90	1626.80	16	N	5	504.25	252.63
857.42	1713.83	17	S	4	390.21	195.61
885.93	1770.85	18	G	3	303.18	152.09
921.45	1841.89	19	A	2	246.16	123.58
			R	1	175.12	88.06

Drag and Drop

Finally, you can also use drag and drop to reorder certain elements in the document. In the document you have created for this tutorial, only the proteins themselves may be reordered. The other elements have inherent ordering, and cannot be moved. If, however, you create a peptide list with no protein information, as you did above by pasting the list directly into the document, then you could also use drag and drop to reorder the peptides within that list. Use drag and drop now to reorder the proteins, and see that it works.

Preparing to Measure

Of course, the end goal of all this document editing is to attempt to measure the peptides in the document on a mass spectrometer. But, first you need to decide which mass spectrometer. Skyline exports transition lists for instruments from four manufacturers: Agilent, Applied Biosystems, Thermo Scientific and Waters. It can also now export native method files for some of these, and in the future all. Skyline can export SRM method files for Thermo LTQ instruments, though Skyline must be running on a computer with the instrument control software installed to do this.

For this tutorial, you will export only one transition list for an AB 4000 Q Trap. Before you do, you should change some settings. To prepare your document for exporting a Q Trap transition list, do the following:

- On the **Settings** menu, click **Transition Settings**.
- Click the **Prediction** tab.
- From the **Collision energy** drop-list, choose 'ABI 4000 Q Trap'.
- From the **Declustering potential** drop-list, choose 'ABI'.
- Click the **Instrument** tab.
- Change the **Max m/z** field to '1800'.
- Click the **OK** button.

Before exporting your first transition list, first save your document to the MethodEdit folder by doing the following:

- On the **File** menu, click **Save** (ctrl-S).
- Navigate to the MethodEdit folder.
- In the **File name** field, enter 'MethodEdit Tutorial'.
- Click the **Save** button.

Next, you should note that the document created in this tutorial contains 355 transitions. If you already had accurate measurements of when these peptides elute with the column you will be using, you might be able to schedule them all in a single method, so that each is measured for only a small window of time. Since you do not yet have these measurements, however, you will first need to measure over the entire gradient, dividing the measurements into groups of about 75 transitions per injection.

With this information, you are ready to export a transition list for the AB 4000 Q Trap. To do so, perform the following steps:

- On the **File** menu, choose **Export**, and then click **Transition List**.
- Click the **Multiple methods** radio button.
- Check the **Ignore proteins** checkbox.
- In the **Max transitions per sample injection** field, enter '75'.

This should leave the Export Transition List form looking like:

- Click the **OK** button.
- In the **File name** field, enter 'Yeast_list'.
- Click the **Save** button.

Switch to a Windows Explorer window, and navigate to the MethodEdit folder to see the transition list files you just created. The contents of the MethodEdit folder should now look like:

Name	Date modified	Type	Size
FASTA	3/22/2010 10:16 PM	File folder	
Library	3/22/2010 8:02 PM	File folder	
Yeast_atlas	3/22/2010 7:31 PM	File folder	
MethodEdit Tutorial.sky	3/25/2010 9:15 PM	SKY File	188 KB
MethodEdit Tutorial.sky.view	3/25/2010 9:15 PM	VIEW File	3 KB
Yeast_list_0001.csv	3/25/2010 10:00 PM	Microsoft Office E...	6 KB
Yeast_list_0002.csv	3/25/2010 10:00 PM	Microsoft Office E...	6 KB
Yeast_list_0003.csv	3/25/2010 10:00 PM	Microsoft Office E...	5 KB
Yeast_list_0004.csv	3/25/2010 10:00 PM	Microsoft Office E...	6 KB
Yeast_list_0005.csv	3/25/2010 10:00 PM	Microsoft Office E...	4 KB

Open the first of the five new files, and you should find a transition list that looks like:

	A	B	C	D	E	F
1	618.2911	879.4054	5	YIL075C.LDQDSTSENVK.1y8.light	76.2	39.7
2	618.2911	764.3785	5	YIL075C.LDQDSTSENVK.2y7.light	76.2	39.7
3	618.2911	677.3464	5	YIL075C.LDQDSTSENVK.4y6.light	76.2	39.7
4	618.2911	576.2988	5	YIL075C.LDQDSTSENVK.3y5.light	76.2	39.7
5	618.2911	472.2038	5	YIL075C.LDQDSTSENVK.5b4.light	76.2	39.7
6	450.7611	716.3937	5	YGL234W.LAQSPVVGK.1y7.light	64	30.1
7	450.7611	588.3352	5	YGL234W.LAQSPVVGK.2y6.light	64	30.1
8	450.7611	501.3031	5	YGL234W.LAQSPVVGK.4y5.light	64	30.1
9	450.7611	185.1285	5	YGL234W.LAQSPVVGK.3b2.light	64	30.1
10	450.7611	313.187	5	YGL234W.LAQSPVVGK.5b3.light	64	30.1
11	668.3286	803.4006	5	YEL032W.STASSVNATPSSAR.2y8.light	79.8	42.5
12	668.3286	689.3577	5	YEL032W.STASSVNATPSSAR.5y7.light	79.8	42.5
13	668.3286	618.3206	5	YEL032W.STASSVNATPSSAR.3y6.light	79.8	42.5
14	668.3286	517.2729	5	YEL032W.STASSVNATPSSAR.1y5.light	79.8	42.5
15	668.3286	819.3843	5	YEL032W.STASSVNATPSSAR.4b9.light	79.8	42.5

The columns are in the order: precursor m/z, product m/z, dwell time, extended peptide, declustering potential and collision energy. This should be enough to paste into the AB method creation user interface and create a method that you could use to run the instrument on a yeast sample to attempt measuring these peptides.

Conclusion

There is certainly a lot more to learn about using the Skyline application for your targeted proteomics experiments. You should, however, feel confident enough to begin creating your own real Skyline documents. Hopefully these documents will help you get set up to measure peptides that test new hypotheses quicker than you have before. Then you will want to import your instrument output files back into Skyline for peak integration and results analysis. We think you will find that the context you create in a Skyline document greatly simplifies understanding the instrument output. Just how to perform these next steps, however, is covered in other instructional materials you can find on the Skyline web site.