

Skyline Spectral Library Explorer

Skyline has had the ability to build BiblioSpec spectral libraries¹ from experimental peptide search results for a long time. Skyline also allows you to use any of the major publicly available spectral libraries in from the [Global Proteome Machine](#) (GPM), [National Institute of Standards](#) (NIST), the [Institute for Systems Biology](#) (ISB), and the [MacCoss Lab](#). These features have been available since version 0.2, and are well documented in the [Skyline Targeted Method Editing](#) tutorial and [Skyline Video 1: Method Building](#).

This tutorial presents the Spectral Library Explorer, added to Skyline in version 0.7. The Spectral Library Explorer will allow you to browse the contents of any library that can be used with Skyline, whether you built it from your experimental results or downloaded it from a public repository. You can also use the library explorer to add peptides to your Skyline document, either one at a time or all at once. By providing a background proteome and appropriate modification settings, you can help Skyline interpret a raw spectral library in the context of your experiments, to create more information rich documents.

Getting Started

To start this tutorial, download the following ZIP file:

<https://skyline.gs.washington.edu/tutorials/LibraryExplorer.zip>

Extract the files in it to a folder on your computer, like:

C:\Users\brendanx\Documents

This will create a new folder:

C:\Users\brendanx\Documents\LibraryExplorer

If you inspect the contents of this new folder, you will find that it contains only 3 files:

- labeled_15N.blib – a spectral library containing spectra for unlabeled and 15N labeled peptides from the protein Adolase
- phospho.blib – a spectral library containing spectra from a phosphorylation experiment
- human.protdb – a small background proteome file built from part of a FASTA file for human proteins

Now start Skyline to learn more about what it can do with these files.

Exploring a Library

Before you can explore a library, you need to tell Skyline where to find it. Since it is assumed that you will eventually use these libraries as part of your Skyline editing environment, you achieve this by adding

your library of interest to the global list of libraries for document editing. If your objective is really just to browse through an existing library, as we will start out doing in this tutorial, you can probably imagine a simpler implementation, but in practice, if you are using or building libraries for editing documents in Skyline, you will see that the library explorer gives you quick access to your libraries.

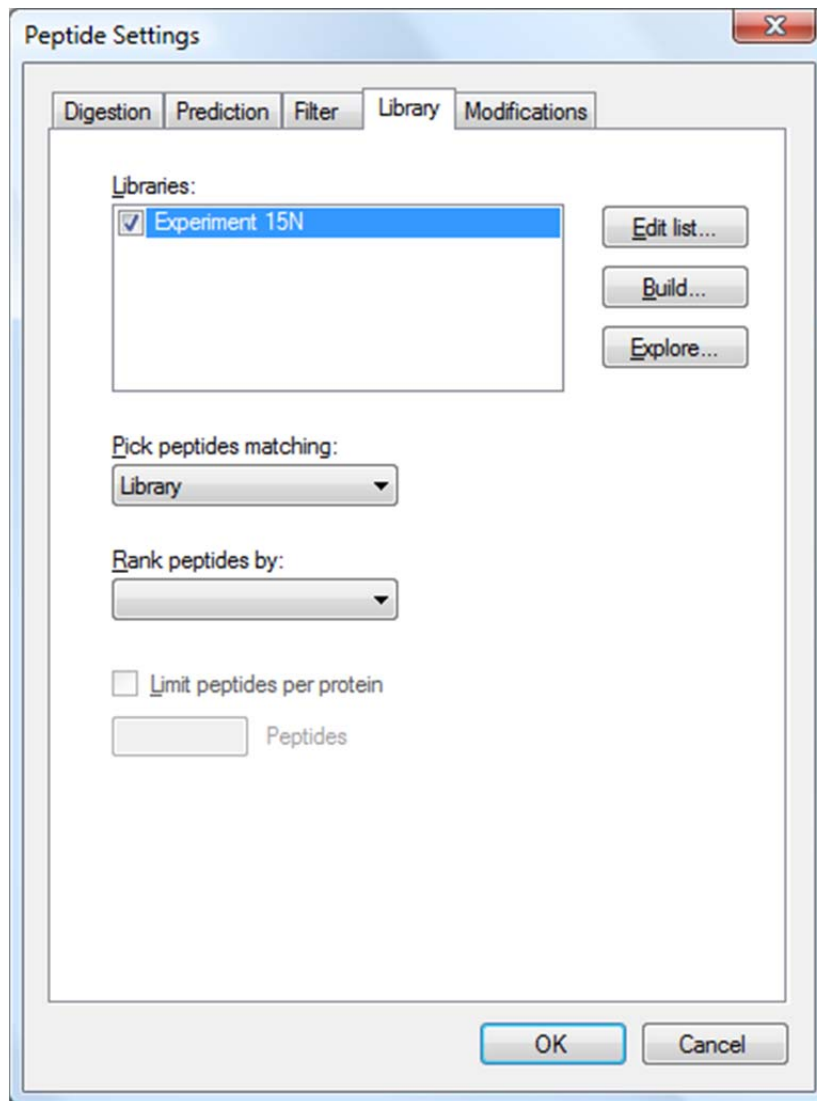
To get started with the library containing 15N labeled peptides perform the following steps:

- On the **Settings** menu, click **Peptide Settings**.
- Click the **Library** tab.
- Click the **Edit List** button.
- Click the **Add** button in the **Edit Libraries** form.
- Enter 'Experiment 15N' in the **Name** field of the **Edit Library** form.
- Click the **Browse** button.
- Navigate to the LibraryExplorer folder created earlier.
- Select the 'labeled_15N.blib' file.
- Click the **Open** button.
- Click the **OK** button in the **Edit Library** form.
- Click the **OK** button in the **Edit Libraries** form.

The **Libraries** list in the **Peptide Settings** form should now contain the 'Experiment 15N' library you just created.

- Check the 'Experiment 15N' checkbox to tell Skyline to use this library in the current document.
- If you have any other libraries in this list checked, uncheck them now.

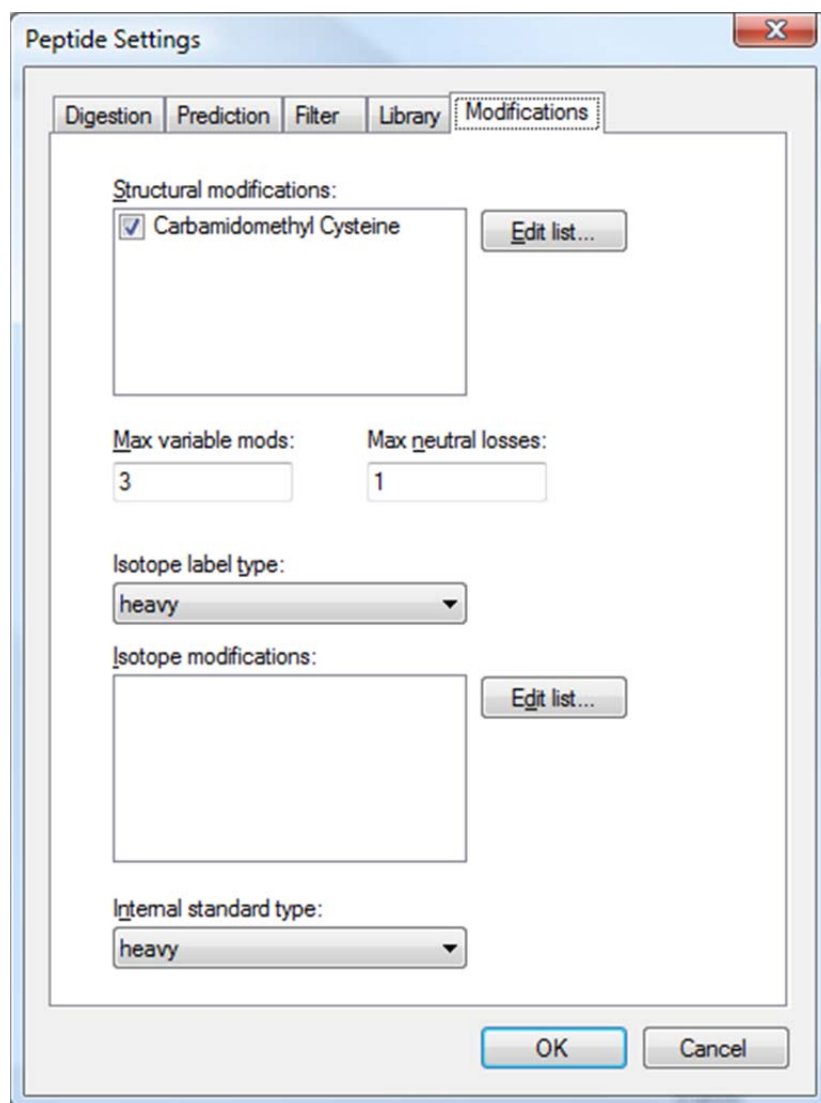
The **Peptide Settings** form should now look something like:



Next, ensure that peptide modifications are set to the default values:

- Click on the **Modifications** tab.

The form should look like:

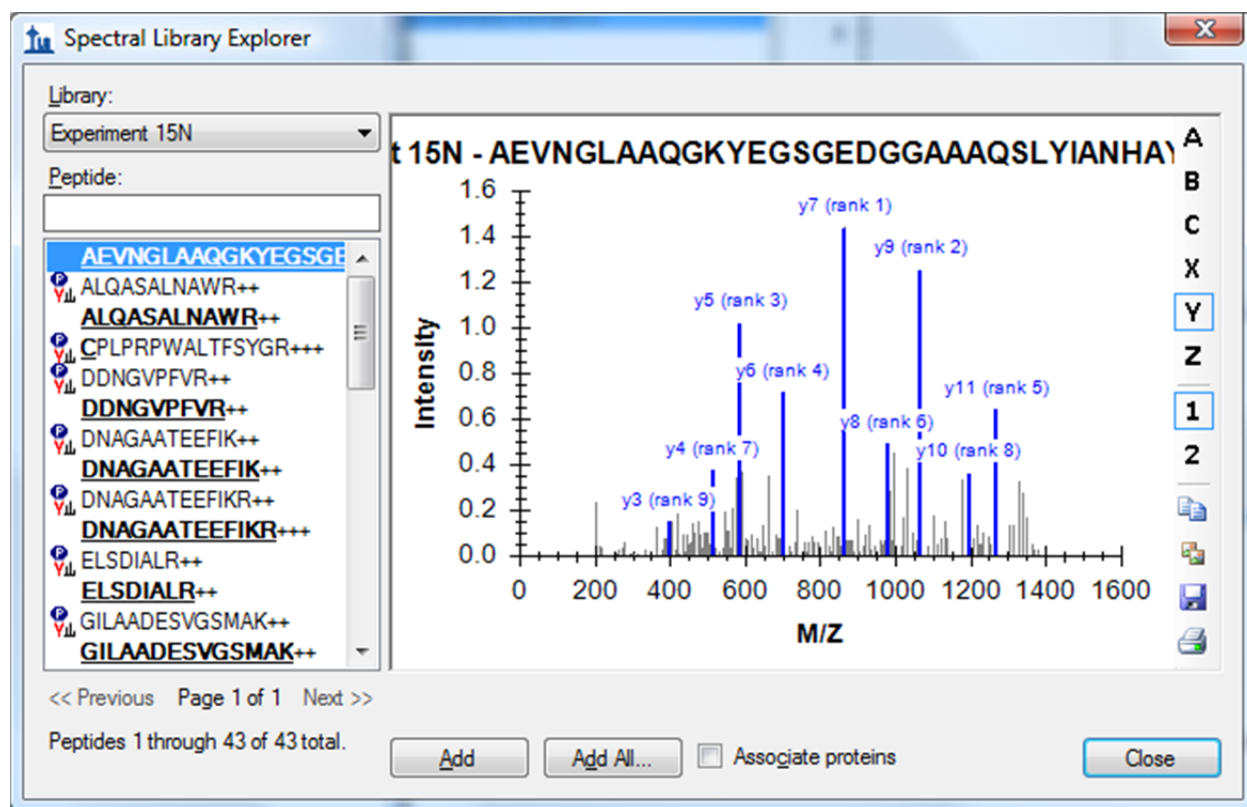


If you have other modifications that do not appear here, uncheck all but the 'Carbamidomethyl Cysteine' modification shown above, and close the **Peptide Settings** form by clicking on the **OK** button.

To open the library explorer and view the contents of the library you just added, do the following:

- On the **View** menu, click **Spectral Libraries**.

The library explorer should look something like:



On the left side of the explorer, the **Library** list should show that you are currently viewing the Experiment 15N library. The **Peptide** list below it shows the peptide sequences and charge states which have been matched to the spectra in this library. Above the peptide list is a filter box and below it are paging controls. The <<Previous and Next>> buttons are disabled for this library, because all of its spectra can be listed in a single page. At the very bottom, the library explorer reports the page contains 1 through 43 of a total 43 peptide spectrum matches.

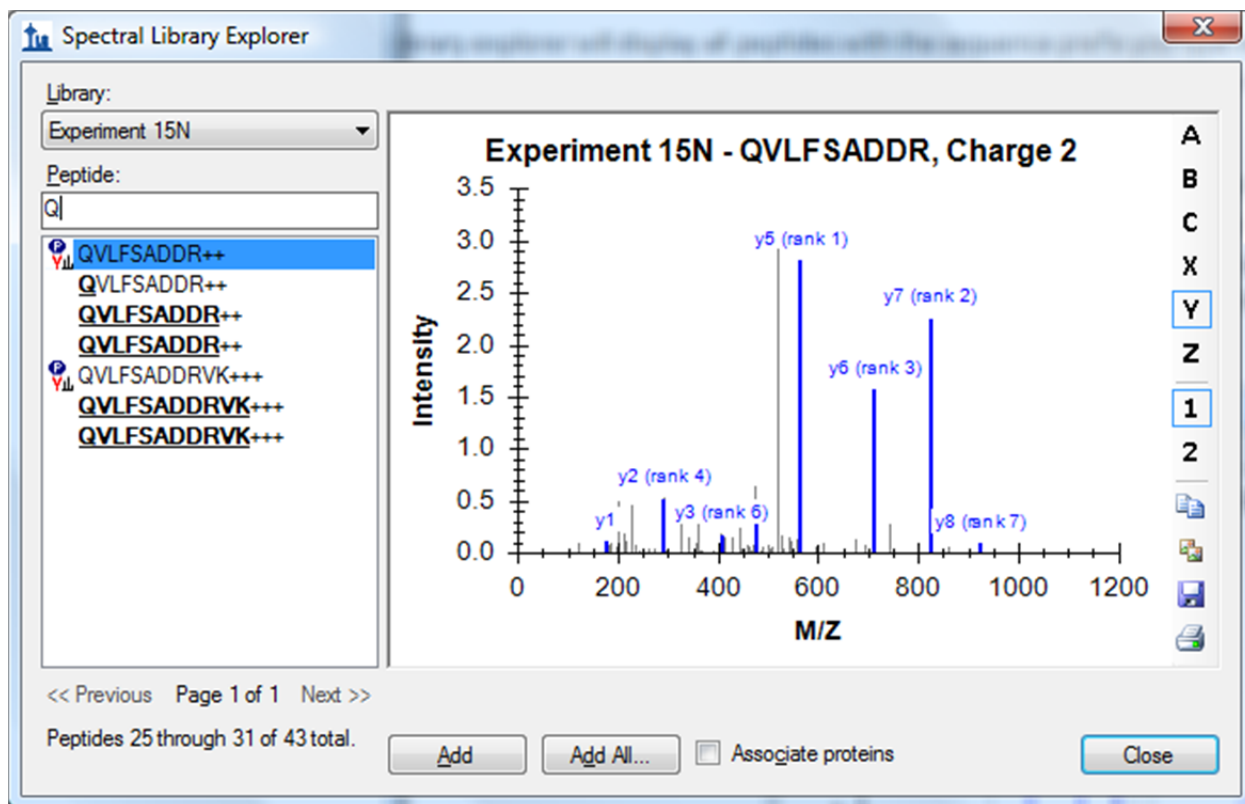
As in the Skyline peptide document view, modified amino acid residues appear bold and underlined in the library explorer peptide list. Hover your cursor over any modified peptide, and Skyline will display a tip with the modification masses listed after each modified amino acid residue.

Some of the listed peptides show a peptide icon to the left of the sequence, while others do not. The icon indicates that the current document modification settings match the modified state of the peptide in the library. None of the peptides where the entire sequence is bold and underlined show the icon. This means that the current document settings do not explain 15N isotope modification of all amino acid residues. The modified peptide CPLRPWALTFSYGR+++ does show an icon, however, because the current document specifies the 'Carbamidomethyl Cysteine' modification. If you hover over the peptide, you can see that the modification on the Cysteine is listed C[+57.0] as expected.

To narrow the list of peptides with the peptide filter box, do the following:

- Click in the text box above the **Peptide** list.
- Type 'Q'.

The library explorer will display all peptides with the sequence prefix you type in this text box. In this case, the library is small enough that the single Q is enough to reduce the list to the various modified states for the two peptides QVLFSADDR++ and QVLFSADDRVK+++.



Hover the cursor over the one displayed as QVLFSADDR++, and you will see that the glutamine modification is displayed in the tip as Q[+17.0] for a Gln->pyro-Glu modification. To understand why Skyline displays both QVLFSADDR++ and QVLFSADDRVK+++ twice, you can hover the cursor over these peptides as well. You will find that they represent all 15N modified peptides with and without the Gln->pyro-Glu modification.

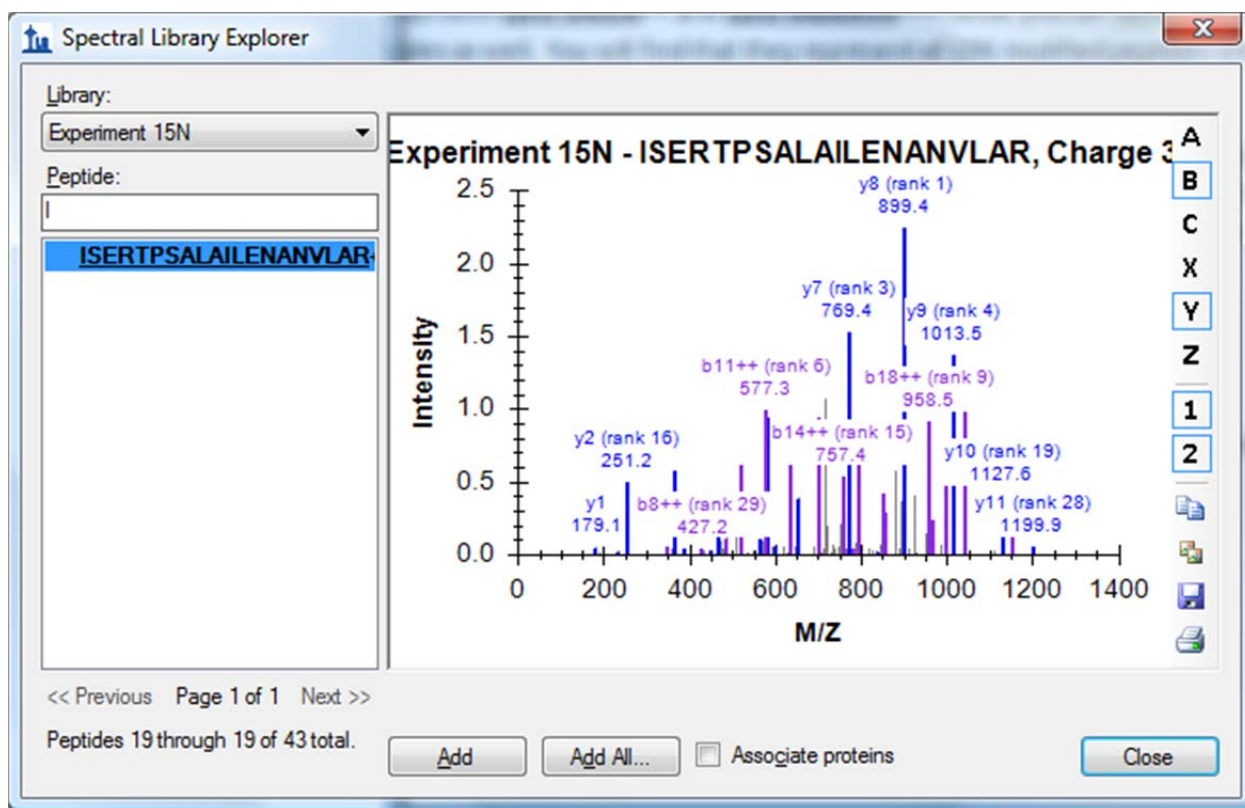
Turning your attention to the right side of the library explorer, you will see a Skyline MS/MS spectrum chart similar to the one Skyline displays during document editing, and in fact this chart supports most of the same features. To explore a few of these features, perform the following steps:

- Backspace over the 'Q' and type 'I'.
- On the right-side toolbar, if not already pushed, click the **B** button to show b-ions.
- If not already pushed, click the **2** button to show charge 2 product ions.

Notice that the toolbar also contains buttons to copy, save and print the current chart, and as with most charts in Skyline, further options can be accessed through a right-click menu.

- Right- click on the spectrum chart, and click on **Observed m/z Values**.

The library explorer should now look something like:



The chart is pretty crowded in a window small enough to paste into this document. Hopefully you are using a larger window, but you can also zoom and navigate in this graph as you would graphs in the main Skyline Window.

- Use the mouse scroll-wheel to zoom into the current chart.
- Holding the Ctrl key down, click and drag to pan from side to side in the zoomed chart.
- Right-click on the chart, and click **Undo All Zoom/Pan**.

Now clear the filter box above the **Peptide** list, so that all peptides are again displayed.

Matching Modifications

As noted, many of the peptides in the library do not match the current peptide modification settings for your document. To address this issue, perform the following steps, without closing the **Spectral Library Explorer**:

- On the **Settings** menu, click on **Peptide Settings**.
- Click the **Modifications** tab.

To add the Gln->pyro-Glu modification:

- Click the **Edit List** button next to the **Structural Modifications** list.
- Click the **Add** button.
- In the **Name** field, enter 'Gln->pyro-Glu'.
- In the **Amino Acid** field, enter 'Q'.
- Check the **Variable** checkbox.
- In the **Chemical Formula** field, enter '-NH3'.

The **Edit Structural Modification** form should look like:

The screenshot shows a dialog box titled "Edit Structural Modification". It has a close button (X) in the top right corner. The "Name:" field contains the text "Gln->pyro-Glu". To the right of this field are "OK" and "Cancel" buttons. Below the "Name" field, there are two dropdown menus: "Amino acid:" with "Q" selected, and "Terminus:" which is empty. To the right of these is a checked checkbox labeled "Variable". Below these is the "Chemical formula:" field containing "-NH3", followed by a right-pointing arrow button. At the bottom, there are two text boxes: "Monoisotopic mass:" with the value "-17.026549" and "Average mass:" with the value "-17.03052". To the right of these is a button labeled "Loss >>".

- Click the **OK** button on the **Edit Structural Modification** form.
- Click the **OK** button on the **Edit Structural Modifications** form.
- Check the checkbox for the 'Gln->pyro-Glu' modification you just created.

To add a ¹⁵N isotopic modification on all amino acid residues:

- Uncheck any entries in the **Isotope modifications** list which you may have checked.
- Click the **Edit List** button next to **Isotope modifications**.
- Click the **Add Button**.
- In the **Name** field, enter 'Label:15N'.
- Check the **15N** checkbox, leaving the **Amino acid** field blank.

The **Edit Isotope Modification** form should look like:

Edit Isotope Modification

Name:

Amino acid:

Terminus:

☐ Chemical formula

☐ 13C ☒ 15N ☐ 18O ☐ 2H

Monoisotopic mass:

Average mass:

Relative retention time:

- Click the **OK** button on the **Edit Isotope Modification** form.
- Click the **OK** button on the **Edit Isotope Modifications** form.
- Check the checkbox for the 'Label:15N' modification you just created.

The **Peptide Settings** form should now look like:

Peptide Settings

Digestion Prediction Filter Library **Modifications**

Structural modifications:

- ☒ Carbamidomethyl Cysteine
- ☒ Gln->pyro-Glu

Edit list...

Max variable mods: 3 Max neutral losses: 1

Isotope label type: heavy

Isotope modifications:

- ☒ Label:15N

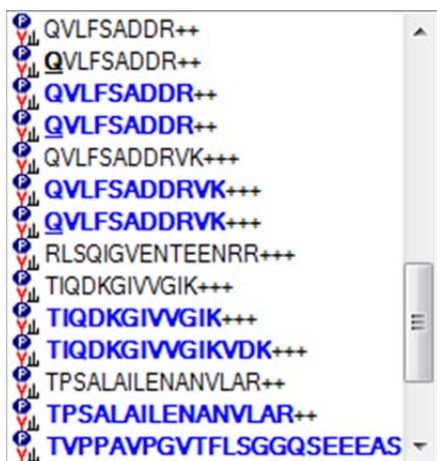
Edit list...

Internal standard type: heavy

OK Cancel

- Click the **OK** button for the **Peptide Settings** form.
- Return to the **Spectral Library Explorer**.
- Scroll down to the peptides beginning with Q.

You should find the peptide list looking like:



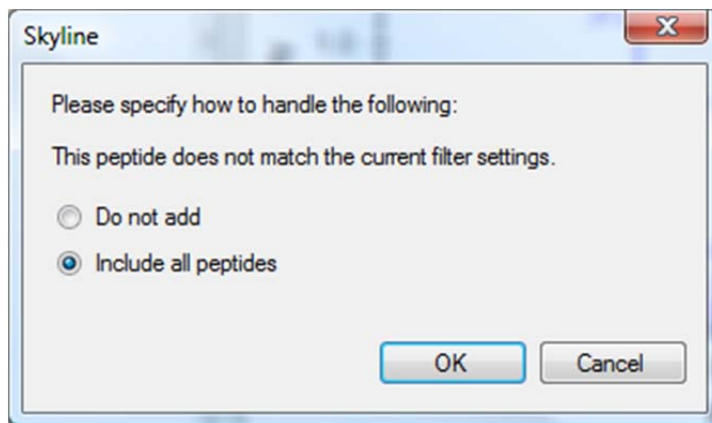
All of the peptides now display icons to the left, indicating your document modifications match those found in the library, and modifications are now visually displayed on the peptide sequence text just as they would be in the document peptide view. Isotope modifications are highlighted in blue, and it is now possible to distinguish visually between the ^{15}N labeled **QVLFSADDR** and its pyro-Glu modified form **QVLFSADDR**.

Adding Library Peptides to the Document

The Spectral Library Explorer makes it simple to add library peptides to your document.

- Select the first peptide (**AEVNGLAAQGKYEGSGEDGGAAAQSLYIANHAY**) in the peptide list.
- Click on the **Add** button.

The following form may appear:



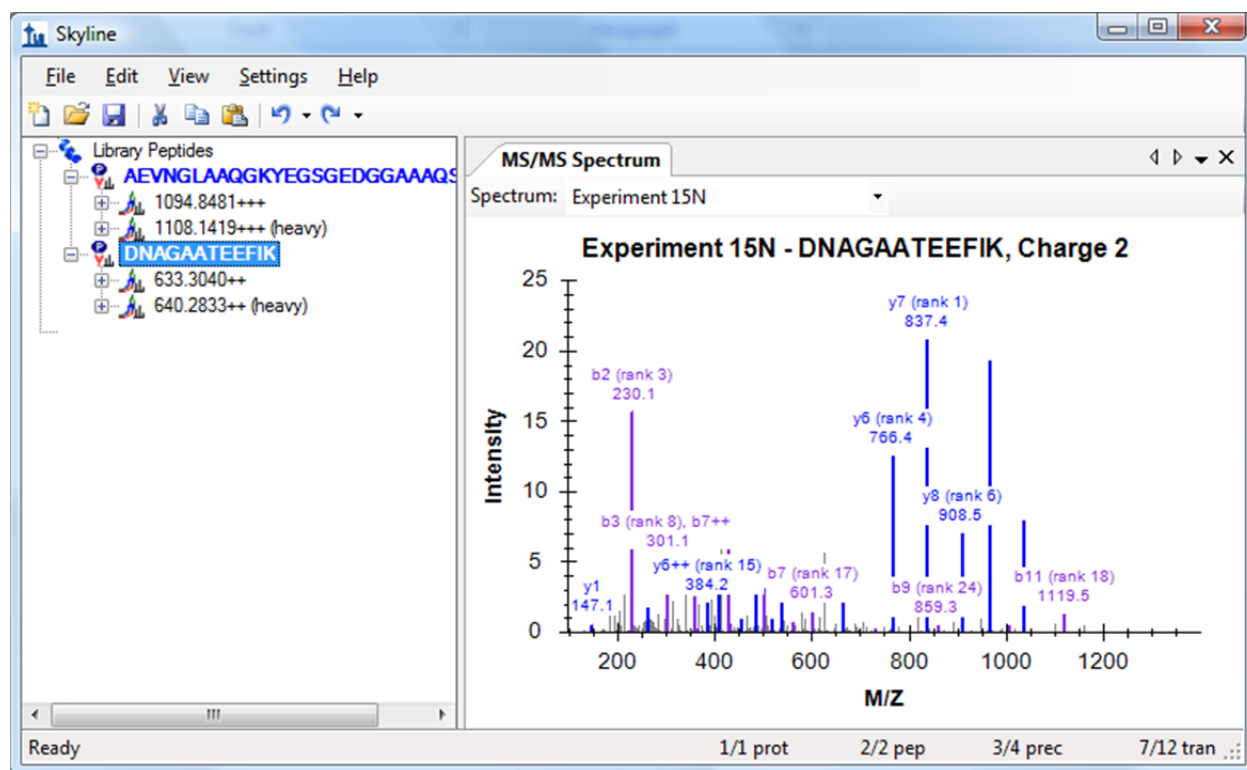
This form appears because the peptide **AEVNGLAAQGKYEGSGEDGGAAAQSLYIANHAY** contains a missed cleavage, and the default document settings filter for only peptides with no missed cleavages. The maximum number of missed cleavages allowed can be changed in the **Digestion** tab of the **Peptide Settings** form, but for now choose **Include all peptides** and click the **OK** button.

The peptide **AEVNGLAAGKYEGSGEDGGAAQSLYIANHAY** is added to the document in a peptide list named 'Library Peptides'. Notice also that the peptide has been matched to the library and that the spectrum chart is displayed in the Skyline main window.

To add more peptides from the **Spectral Library Explorer**, do the following:

- In the **Peptide** filter box, enter 'DNA' to select the peptide Select 'DNAGAATEEFIK++'.
- Click the **Add** button.
- If the light and heavy precursors are not showing in the peptide tree view, on the **Edit** menu, choose **Expand All** and click **Peptides**.

Notice the toolbar that has been added above the **MS/MS Spectrum** graph in the main Skyline window, with the **Spectrum** dropdown list. By default, Skyline uses the light spectrum if both the heavy and light spectra are available. You can still view the heavy spectrum by choosing 'Experiment 15N (heavy)' from the **Spectrum** list. You can switch between the 'Experiment 15N' and 'Experiment 15N (heavy)' selection and see how the displayed "observed m/z values" of the fragment ion masses change accordingly.



Add peptides for the other spectra in the filtered list by doing the following:

- Select the third peptide 'DNAGAATEEFIKR++'.
- Click the **Add** button.
- Click the **OK** button to confirm adding this missed cleavage peptide, if asked.
- Select the fourth peptide '**DNAGAATEEFIKR+++**'.

- Click the **Add** button.
- Click the **OK** button to confirm adding this missed cleavage peptide, if asked.

Note that the final addition simply adds a new charge state to the peptide you added previously.

To prepare for the next section of this tutorial, do the following:

- Click the **Close** button in **Spectral Library Explorer** form.
- Save the current document as '15N_library_peptides.sky'.
- Click the new document button on the toolbar.

Neutral Losses

The other library included with this tutorial contains a number of peptides with phosphorylated serines (Ser + HPO₃ = Ser + 80 Da), which means the MS/MS spectra often contain high intensity peaks for fragment ions with a neutral loss of H₃PO₄ (-98 Da). The ability to define neutral loss modifications was added to Skyline in version 0.7. By correctly matching your document modifications to your spectral library modifications, as you learned to do in the section on Matching Modifications, the Spectral Library Explorer can correctly label peaks in the MS/MS spectra with neutral loss ions.

To prepare for the second library of this tutorial, do the following:

- On the **Settings** menu, click **Peptide Settings**.
- Click the **Modifications** tab, if it is not already showing.
- Uncheck the checkboxes for the 'Gln->pyro-Glu' and 'Label:15N' modifications.

The **Peptide Settings** form should now something look like:

Peptide Settings

Digestion Prediction Filter Library Modifications

Structural modifications:

- ☒ Carbamidomethyl Cysteine
- ☐ Gln->pyro-Glu

Edit list...

Max variable mods: 3 Max neutral losses: 1

Isotope label type: heavy

Isotope modifications:

- ☐ Label:15N

Edit list...

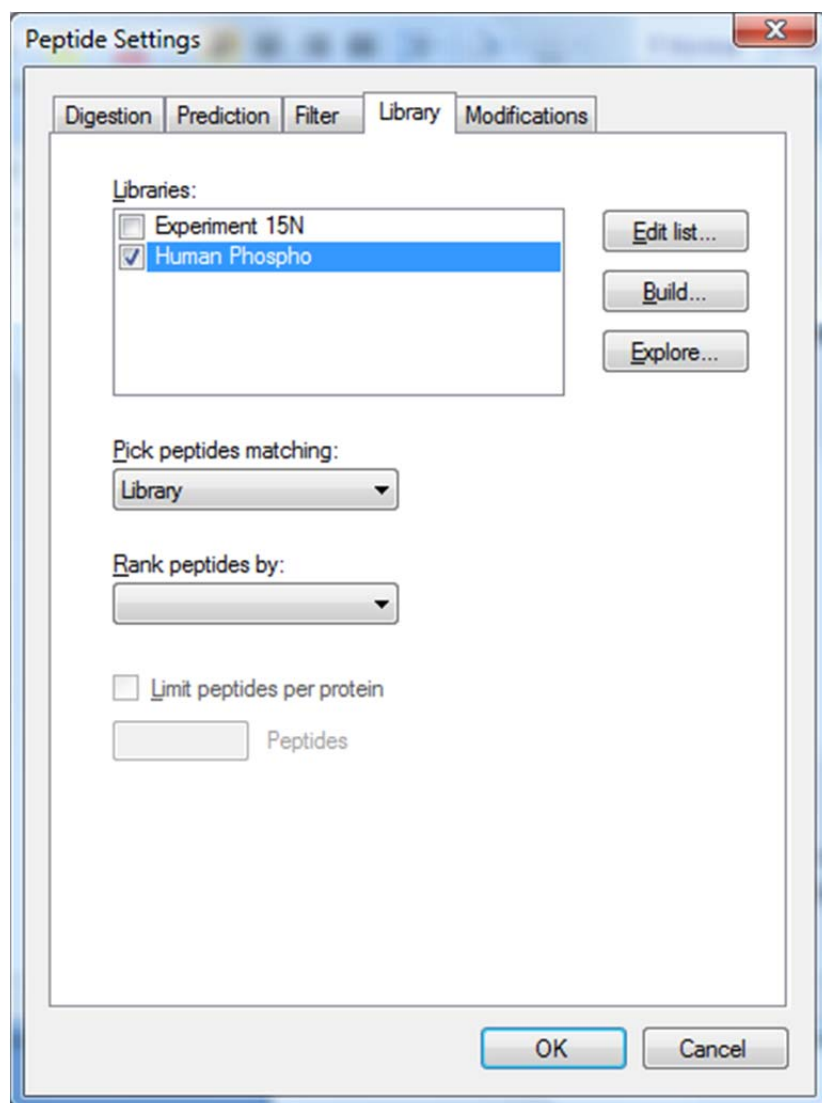
Internal standard type: heavy

OK Cancel

To add the second library, do the following:

- Click the **Library** tab.
- Uncheck the 'Experiment 15N' library checkbox.
- Click the **Edit List** button.
- Click the **Add** button in the **Edit Libraries** form.
- In the **Name** field, enter 'Human Phospho'.
- Click the **Browse** button.
- Navigate to the LibraryExplorer folder for this tutorial.
- Double click on 'phospho.blib'.
- Click the **OK** button on the **Edit Library** form.
- Click the **OK** button on the **Edit Libraries** form.
- Check the 'Human Phospho' library checkbox.

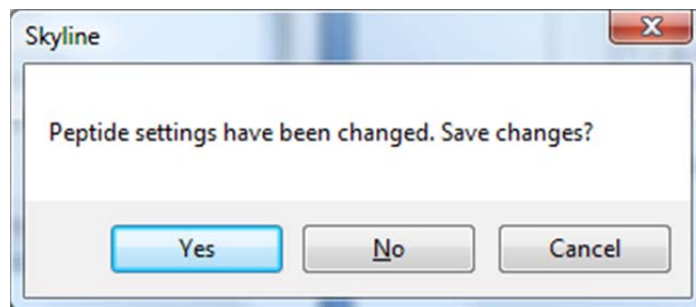
The **Peptide Settings** form should now look something like:



You are now ready to explore the Human Phospho library.

- Click on the **Explore** button.

Skyline will present the following message:



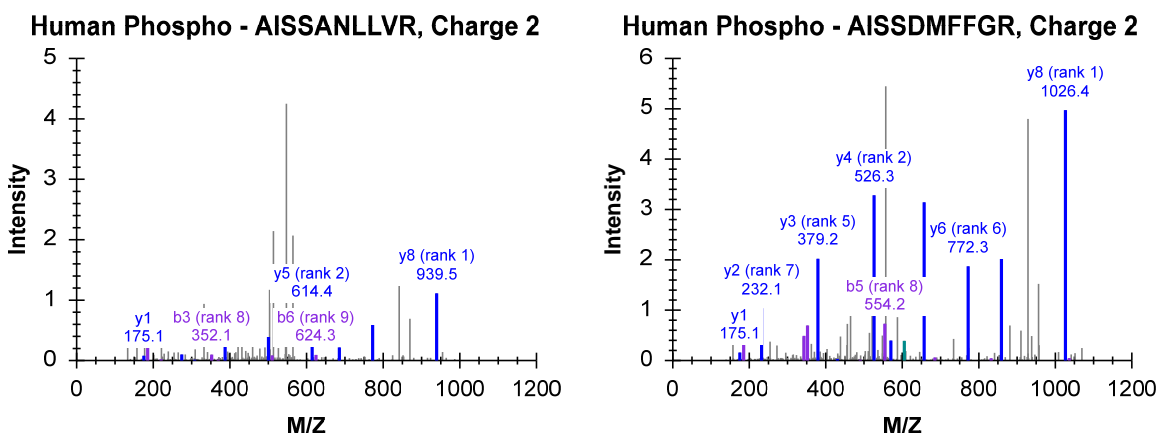
- Click on the **Yes** button, to save the new settings and open the **Spectral Library Explorer**.

- Choose the new 'Human Phospho' library from the **Library** drop-list in the **Spectral Library Explorer**.

You can see that most of peptides in the library do not yet match the current document settings by noting that they lack peptide icons.

- In the **Peptide** field enter 'AISS'.

This will narrow the list of peptides to just two with spectrum charts containing several large unidentified MS/MS peaks, as shown below.



You can improve this situation by doing the following, without closing the library explorer:

- On the **Settings Menu**, click **Peptide Settings**.
- Click the **Modifications** tab.
- Click the **Edit List** button next to **Structural Modifications**.
- Click the **Add** button in the **Edit Structural Modifications** form.
- Enter 'Phospho (ST)' in the **Name** field of the **Edit Structural Modification** form.
- In the **Amino Acid** field, enter 'S, T'.
- Check the **Variable** checkbox.
- In the **Chemical Formula** field, enter 'HO3P'.
- Click the **Loss >>** button.
- Click the blue '+' button.
- Enter 'H3O4P' in the **Neutral Loss Chemical Formula** field of the **Edit Neutral Loss** form.
- Click the **OK** button on the **Edit Neutral Loss** form.

The **Edit Structural Modification** form should now look like:

Edit Structural Modification

Name: Phospho (ST) [OK] [Cancel]

Amino acid: S, T Terminus: [] Variable ☐

Chemical formula: H03P [▶]

Monoisotopic mass: 79.966331 Average mass: 79.979901 [Loss <<]

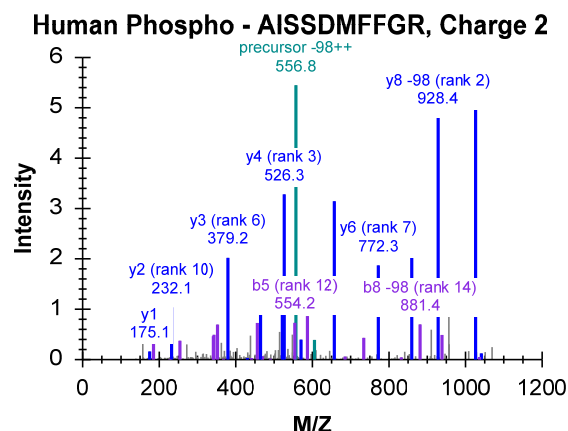
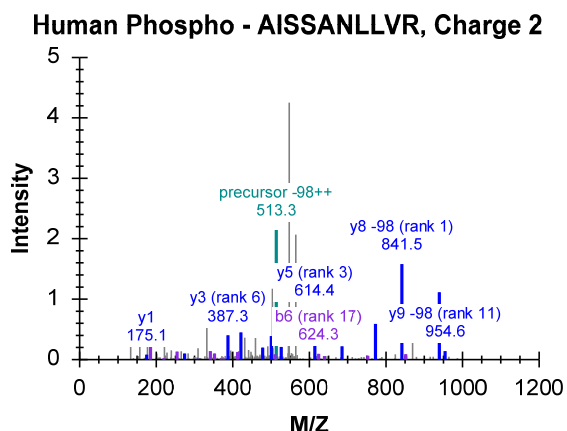
Neutral losses:

- 97.9769 · H304P [+] [✎] [✕]

Note: In version 1.1 and newer, you could have also simply chosen the 'Phospho (ST)' modification from the **Name** dropdown list to get the same end result. The full steps were included to give you some idea of how to work with neutral loss modifications yourself.

- Click the **OK** button on the **Edit Structural Modification** form.
- Click the **OK** button on the **Edit Structural Modifications** form.
- Check the checkbox next to the new 'Phospho (ST)' modification.
- Click the **Ok** button the **Peptide Settings Form**.
- Return to the **Spectral Library Explorer**.
- Right-click the spectrum graph, and click **Precursor** to show precursor ions.

The two filtered peptides should both now have peptide icons to the right of their peptide sequences, and their spectrum charts should look like:



Note the ions which have been added with '-98' losses specified, including both 'precursor -98' ions. In order to correctly identify loss ions, Skyline must have a matching modification in its settings with a neutral loss specified. You can click the **Undo** and **Redo** buttons in the Skyline toolbar to review the difference in ion labeling between having a matching modification and not having one.

You may notice that the AISSANLLVR spectrum has two large peaks which remain unassigned to product ions of the peptide. This should give you pause in using it further in your targeted experiments. More experience with spectral libraries will likely show you that almost regardless of your peptide search settings and score cut-off in building your library, there will be questionable spectra. In this case, to gain more confidence in the spectra, you could consult Swissprot, where you would find that both of the peptides AISSANLLVR and AISSDMFFGR are listed as being phosphorylated exactly as assigned by this search engine. Clearly, the rich access Skyline provides to the contents of your spectral libraries is a great advantage in working with them.

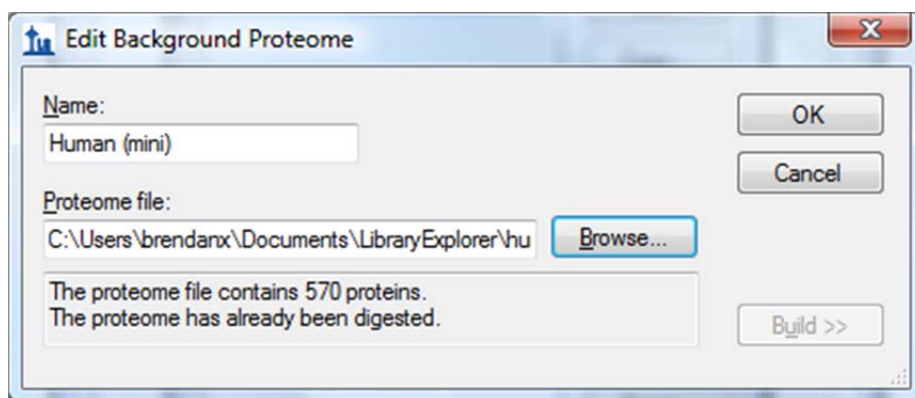
Matching Library Peptides to Proteins

You can use the Spectral Library Explorer to match library peptides to protein sequences in a background proteome, and add peptides to a document with the correct protein associations. To learn more about background proteome files and how to create them yourself, consult the [Targeted Method Editing](#) tutorial.

To add the background proteome supplied with this tutorial to your current document, perform the following steps:

- On the **Settings** menu, click **Peptide Settings**.
- Click the **Digestion** tab.
- From the **Background proteome** dropdown list, choose **<Add...>**.
- Enter 'Human (mini)' in the **Name** field of the **Edit Background Proteome** form.
- Click the **Browse** button.
- Navigate to the LibraryExplorer folder for this tutorial.
- Double click on the 'human.protdb' file.

The **Edit Background Proteome** form should now look like this:



The screenshot shows a Windows-style dialog box titled "Edit Background Proteome". It has a standard title bar with a close button (X). Inside the dialog, there are three main sections. The first section is labeled "Name:" and has a text input field containing "Human (mini)". The second section is labeled "Proteome file:" and has a text input field containing "C:\Users\brendanx\Documents\LibraryExplorer\hu", followed by a "Browse..." button. The third section is a status box at the bottom left containing the text "The proteome file contains 570 proteins. The proteome has already been digested." On the right side of the dialog, there are three buttons: "OK", "Cancel", and "Build >>".

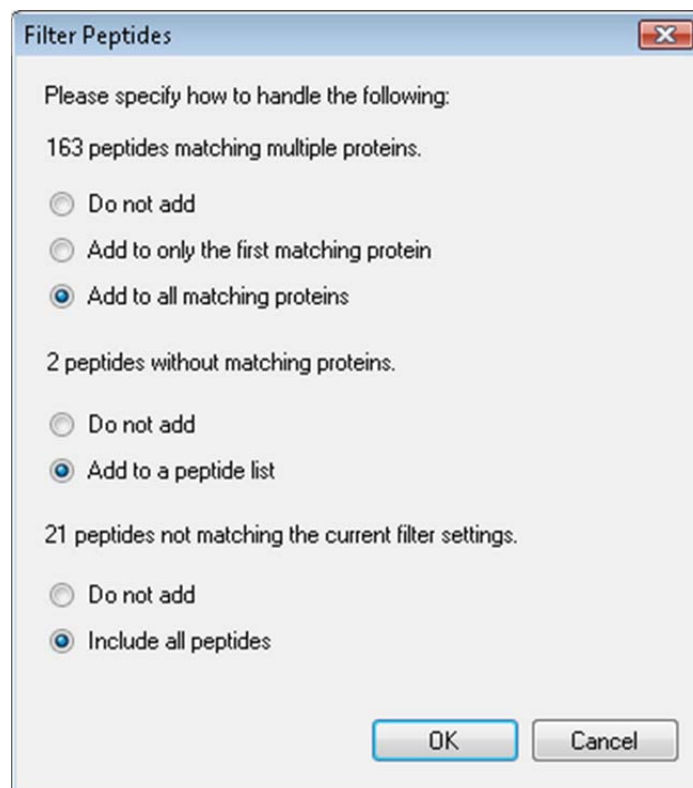
- Click the **OK** button on the **Edit Background Proteome** form.
- In the **Max missed cleavages** dropdown list, choose '2' to allow missed cleavages.
- Click the **OK** button on the **Peptide Settings** form.

Return to the library explorer and clear the filter box in the **Peptide** field so that all peptides are again showing. If you scroll through the list of peptides, you will see that most of them now show a peptide icon to the right of the peptide sequence. Some do not, however, and you can explore their tips to determine that you would still have to add modifications for oxidation on Methionine and N-terminal acetylation to cover all of the modifications in this library.

Instead, perform the following steps to add to your document all of the peptides for which Skyline understands the modifications:

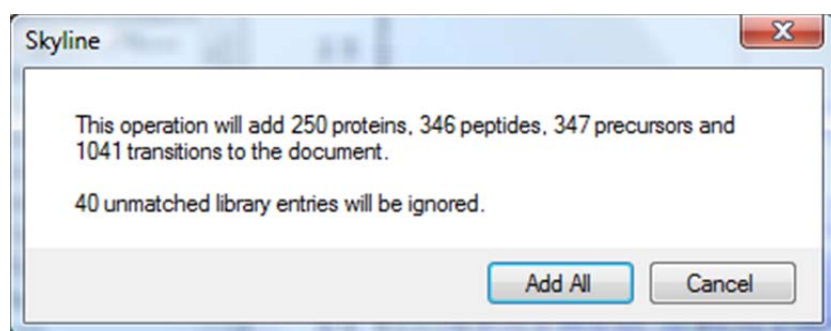
- Check the **Associate Proteins** checkbox in the **Spectral Library Explorer**.
- Click the **Add All** button.

This should bring up a form that looks like:



- For the **163 peptides matching multiple proteins**, choose/change to **Add to only the first matching protein**.
- For the **2 peptides without matching proteins**, choose **Add to a peptide list**.
- For the **199 peptides not matching the current filter settings**, choose **Include all peptides**.
- Click on the **OK** button.

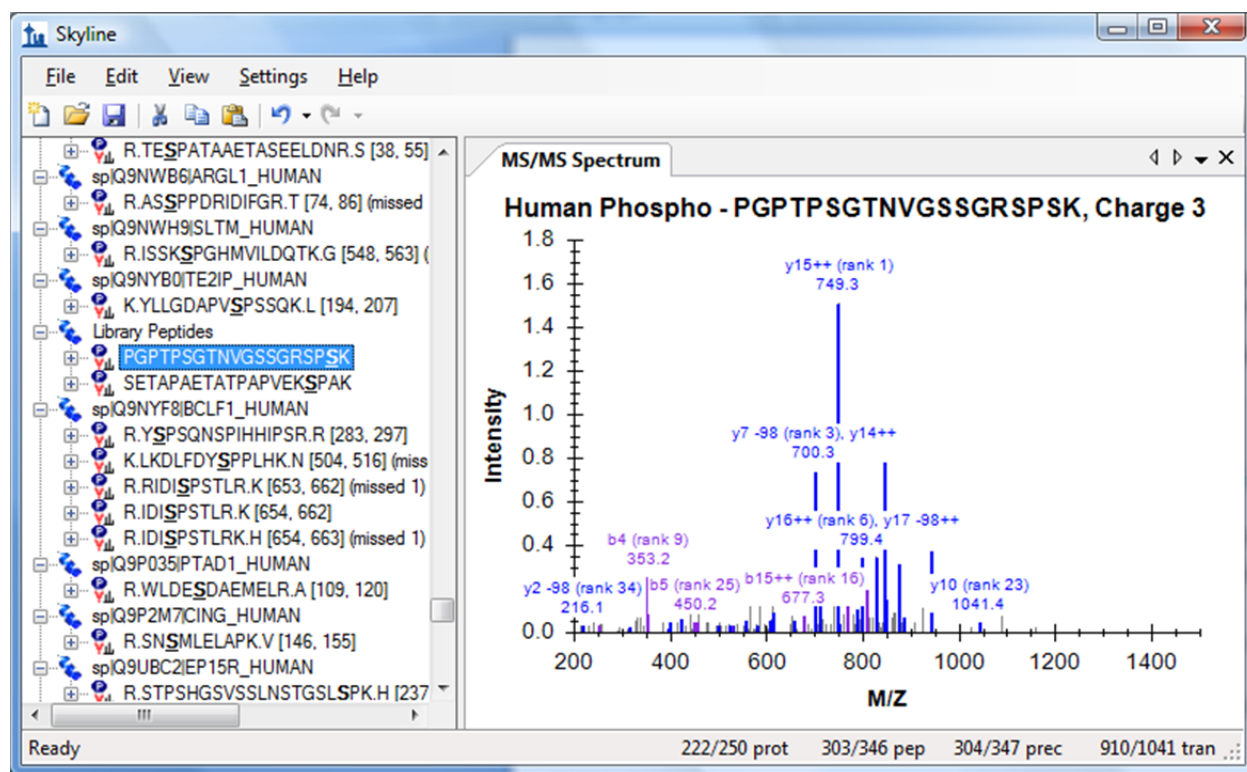
Skyline will display a message that looks like:



This form gives you a preview of the changes that will be made to your document. The 40 unmatched library entries refer to the spectra for which Skyline is still unable to identify the peptide modifications.

- Click the **Add All** button to confirm the operation.

This should leave the main Skyline window looking something like:



As you can see from inspecting the status bar at the bottom-right of the window, Skyline has added all of the proteins, peptides, precursors and transitions it promised. The peptides with no matching proteins in the background proteome have been added to a 'Library Peptides' list, but all of the others have been correctly associated with and grouped by proteins in which they can be found in the background proteome. Though, as mentioned in the first message, many of these peptides belong to multiple proteins. It may be worth using other features in Skyline to explore whether these are merely protein homologues for the same gene, or whether these peptides do not uniquely identify a protein of interest.

Of course, this document is just a start, to show you how quickly Skyline allows you to move from the peptide search results of your shotgun proteomics experiments to an initial unrefined, targeted method. Other tutorials cover how to edit and refine a method like this further.

Conclusion

With the addition of the Spectral Library Explorer, Skyline now provides rich access to the contents of spectral libraries built from peptide search results. You can inspect the contents of any spectral library, and questions about which peptides, charge states and modification states it contains are now easily answered. The Spectral Library Explorer and Skyline itself provide a powerful bridge between exploratory peptide search experiments and targeted investigation. Having completed this tutorial, you should be ready to take full advantage of these features in your own experiments.

Reference List

1. Frewen,B. & MacCoss,M.J. Using BiblioSpec for creating and searching tandem MS peptide libraries. *Curr. Protoc. Bioinformatics*. **Chapter 13**, Unit (2007).