

Skyline Existing and Quantitative Experiments

This tutorial covers how to work with Selected Reaction Monitoring (SRM also referred to as Multiple Reaction Monitoring - MRM) data acquired with transition lists that were not created with Skyline. It also introduces how Skyline can be used to work with quantitative experiments that employ matching isotope labeled internal standard peptides.

In this tutorial, you will work with data as it was published with the introduction of the tool MRMer¹, and also the data from an inter-laboratory study by Addona and co-investigators², hereafter referred to as Study 7, performed as part of the National Cancer Institute supported Clinical Proteomics Technology Assessment for Cancer (CPTAC). Study 7 immediately preceded the introduction of Skyline as the tool of choice for the large inter-laboratory studies of the CPTAC Verification Working Group. As such, its accumulated data files provided the perfect test suite for ensuring Skyline could support the types of experiments being carried out by the Verification Working Group.

Even if you lack transition lists created outside Skyline, however, you can still learn about the features Skyline offers for working with LC-MRM acquisitions that use stable isotope labeled peptides as internal standards for analyte quantification. If you seek extremely high confidence in your peak identifications and quantitative measurements, matching reference peptides and Skyline support for them can play a critical role in helping you achieve your goals.

Getting Started

To start this tutorial, download the following ZIP file:

<https://skyline.gs.washington.edu/tutorials/ExistingQuant.zip>

Extract the files in it to a folder on your computer, like:

C:\Users\brendanx\Documents

This will create a new folder:

C:\Users\brendanx\Documents\ExistingQuant

Now start Skyline, and you will be presented with a new empty document.

Before importing an existing transition list into this new document, you should give Skyline as much information as you have available about the experimental context for which the transition list was designed and in which your data was collected. You will do this by adjusting the settings values for the document before attempting to insert the transition list into it.

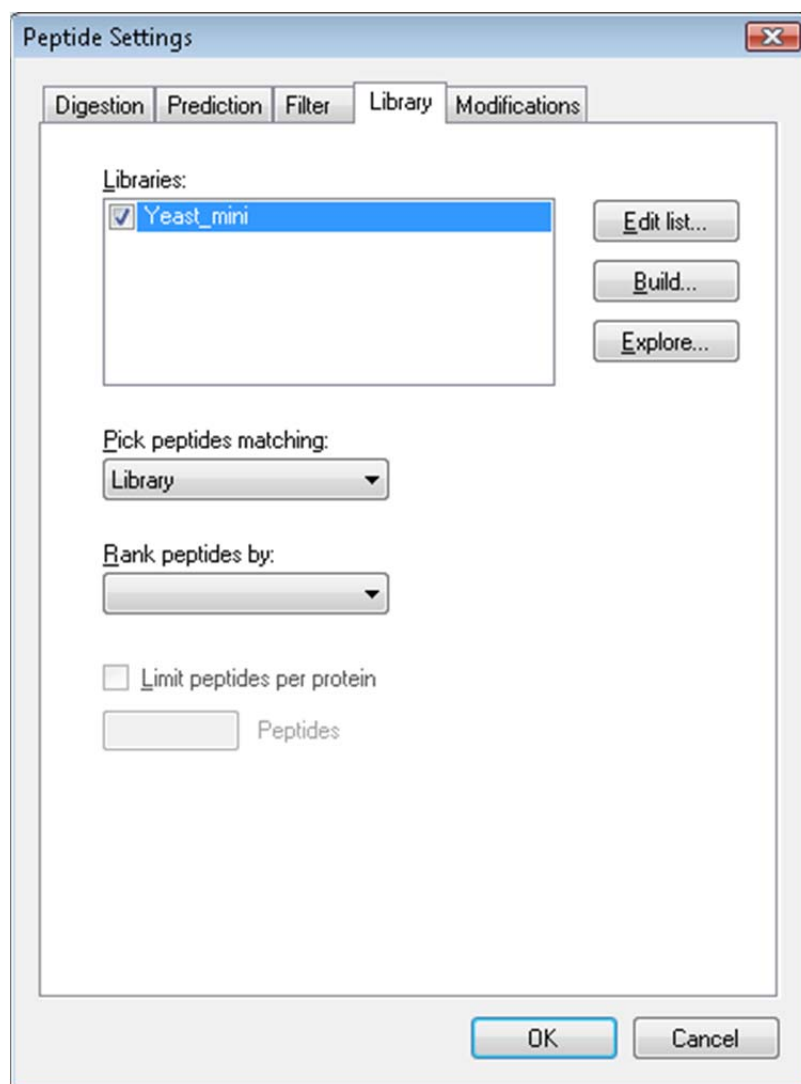
Preparing a Document to Accept a Transition List

This tutorial starts with a look at a data set provided with the MRM analysis software tool named MRMer¹, pronounced murmur. MRMer was an early predecessor to Skyline for viewing and integrating MRM chromatograms, and the data was originally downloaded from its web page in 2008. (<http://proteomics.fhcrc.org/CPL/MRMer.html>) In the MRMer data set, all of the peptides are from yeast and have MS/MS spectra available in the spectral libraries provided by the National Institute for Standards and Technology (NIST). This means it is fairly easy to give Skyline some very useful information about the peptides monitored in this experiment by specifying a spectral library and a background proteome. How to create your own spectral libraries and background proteome files is covered in detail in the “[Targeted Method Editing](#)” tutorial. Here you will use existing files which have been reduced to the minimum information necessary to complete this tutorial, in the interest of keeping the ZIP file download a reasonable size.

To set up the spectral library for the MRMer document, perform the following steps:

- On the **Settings** menu, click **Peptide Settings**.
- Click on the **Library** tab.
- Click the **Edit List** button.
- Click the **Add** button in the **Edit Libraries** form.
- Enter ‘Yeast_mini’ in the **Name** field of the **Edit Library** form.
- Click the **Browse** button.
- Navigate to the MRMer subfolder under the ExistingQuant folder created earlier.
- Select the file ‘Yeast_MRMer_mini.blib’ which contains only spectra for the yeast peptides used in this study.
- Click the **Open** button.
- Click the **OK** button in the **Edit Library** form.
- Click the **OK** button in the **Edit Libraries** form.
- Check the new ‘Yeast_mini’ library in the **Libraries** list.

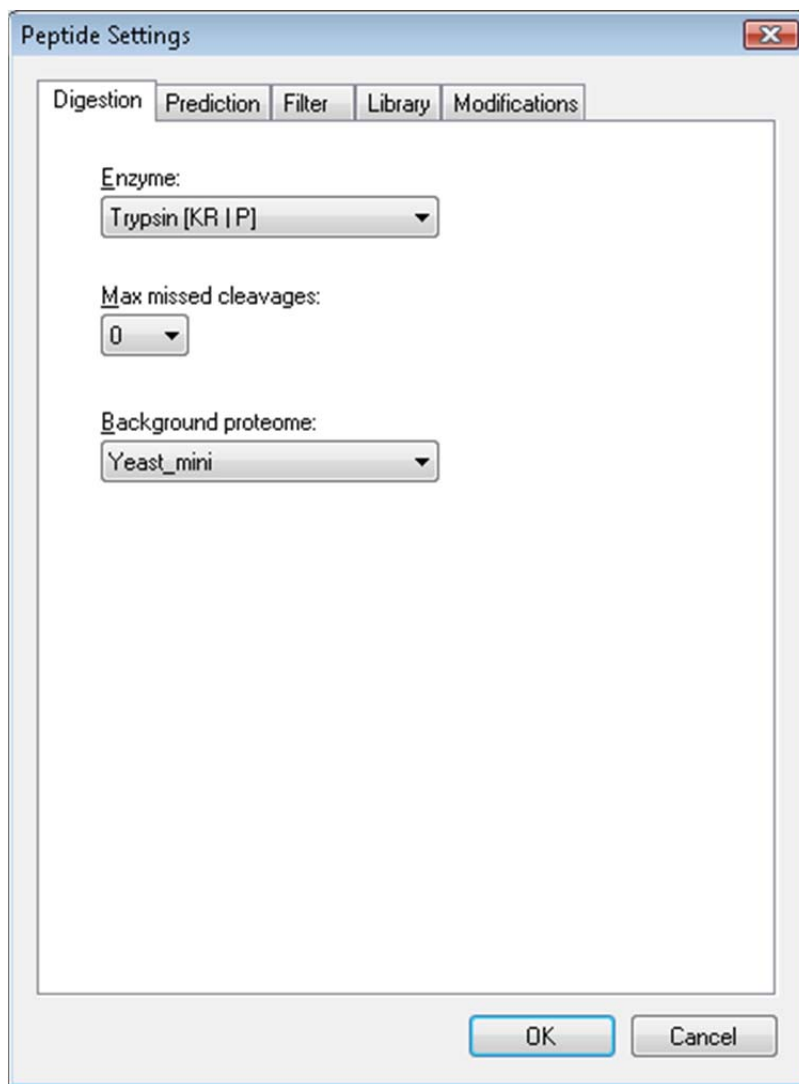
The **Peptide Settings** form should now look something like:



To set up the background proteome for the MRMer document now, perform the following steps:

- In the **Peptide Settings** form, click the **Digestion** tab.
- From the **Background proteome** drop-list, choose **<Add...>**.
- Enter 'Yeast_mini' in the **Name** field of the **Edit Background Proteome** form.
- Click the **Browse** button.
- Navigate to the MRMer subfolder under the ExistingQuant folder created earlier.
- Select the file 'Yeast_MRMer_mini.protdb'.
- Click the **Open** button.
- Click the **OK** button in the **Edit Background Proteome** form.

The **Peptide Settings** form should now look something like:



Finally, before you can insert the transition list from the MRMer experiment into the current document, you will need to define the isotope modifications for the peptides it contains. The MRMer experiment included light unlabeled peptides and matching heavy peptides with stable isotope labeled amino acid residues (SILAC) labeling for Lysine and Arginine. If you inserted the MRMer transition list without first specifying the correct isotope modifications, Skyline would fail to recognize the m/z values for the heavy peptides in the transition list.

To specify the SILAC labeling in the Skyline document settings, perform the following steps:

- Click on the **Modifications** tab.
- Click the **Edit List** button beside the **Isotope modifications** list.
- Click the **Add** button in the **Edit Isotope Modifications** form.
- Enter 'Label:13C(6)15N(2) (C-term K)' in the **Name** field of the **Edit Isotope Modification** form.
- Enter 'K' in the **Amino Acid** field.
- Choose 'C' from the **Terminus** dropdown list.

- Check the **13C** and **15N** checkboxes to tell Skyline to use ^{13}C for all carbon atoms and ^{15}N for all nitrogen atoms present in a Lysine molecule, for a total mass shift of 8 Daltons ($6 \times ^{13}\text{C} + 2 \times ^{15}\text{N}$).

The **Edit Isotope Modification** form should now look like:

Click the **OK** button, and then add a second isotope modification by doing the following:

- Click the **Add** button on the **Edit Isotope Modifications** form.
- Choose 'Label:13C(6)15N(4) (C-term R)' from the **Name** dropdown list of the **Edit Isotope Modification** form.

The **13C** and **15N** checkboxes are checked automatically to tell Skyline to use ^{13}C for all carbon atoms and ^{15}N for all nitrogen atoms present in an Arginine molecule, for a total mass shift of 10 Daltons ($6 \times ^{13}\text{C} + 4 \times ^{15}\text{N}$).

The **Edit Isotope Modification** form should now look like:

Skyline automatically calculates both the monoisotopic and average masses, approximately 8 Daltons for Lysine (K) and 10 Daltons for Arginine (R), that will result from using ^{13}C and ^{15}N in these amino acid residues.

To finish preparing to insert the transition list from the MRMer publication into the current document, perform the following steps:

- Click the **OK** button in the **Edit Isotope Modification** form.
- Click the **OK** button in the **Edit Isotope Modifications** form.
- Check the check boxes in the **Isotope modifications** list for the 'Label: $^{13}\text{C}(6)^{15}\text{N}(2)$ (C-term K)' and 'Label: $^{13}\text{C}(6)^{15}\text{N}(4)$ (C-term R)' modifications you just created.
- Also make sure the checkbox in the **Structural modifications** list for 'Carbamidomethyl Cysteine' is checked, as it will be by default in new installations of Skyline.
- Click the **OK** button in the **Peptide Settings** form.

You should see an empty spectrum chart appear in the Skyline document region. You are now ready to insert the MRMer transition list.

Inserting a Transition List with Associated Proteins

There are two ways you can insert a transition list into Skyline:

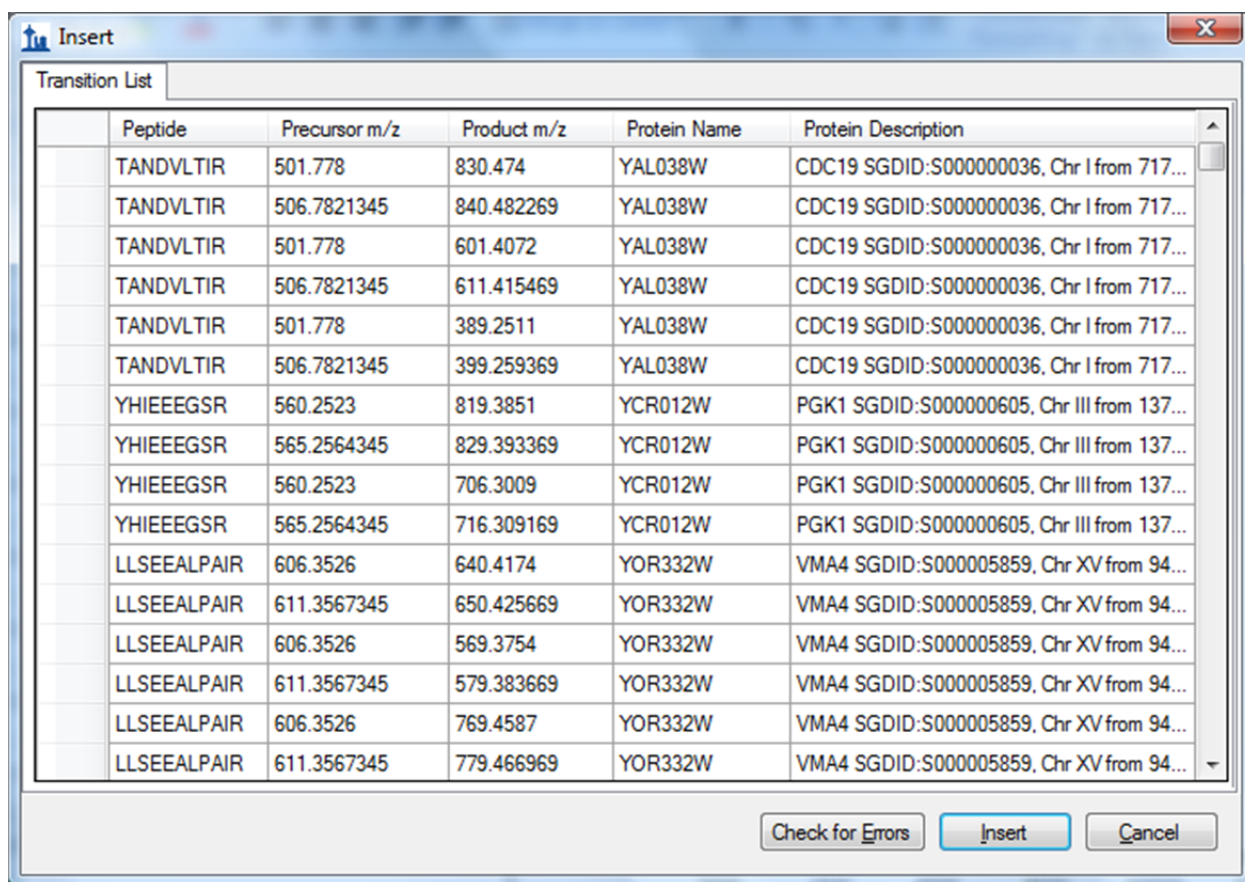
1. Insert into the form displayed by clicking **Edit > Insert > Transition List**.
2. Insert directly into the document by clicking **Edit > Paste**.

For the MRMer data set, you will use the first method. For the Study 7 data set, you will use the second method. The first method, using the **Insert** form, has the benefit of automatically associating peptides with the proteins that contain them, if your document includes a background proteome. Currently this only works for peptides that appear in a single protein in the background proteome, but future versions of Skyline will offer some choice of how to handle peptides appearing in multiple proteins. For this tutorial, the two peptides from the MRMer transition list that appear in multiple proteins have been removed.

To add the transition list peptides to your current document, perform the following steps:

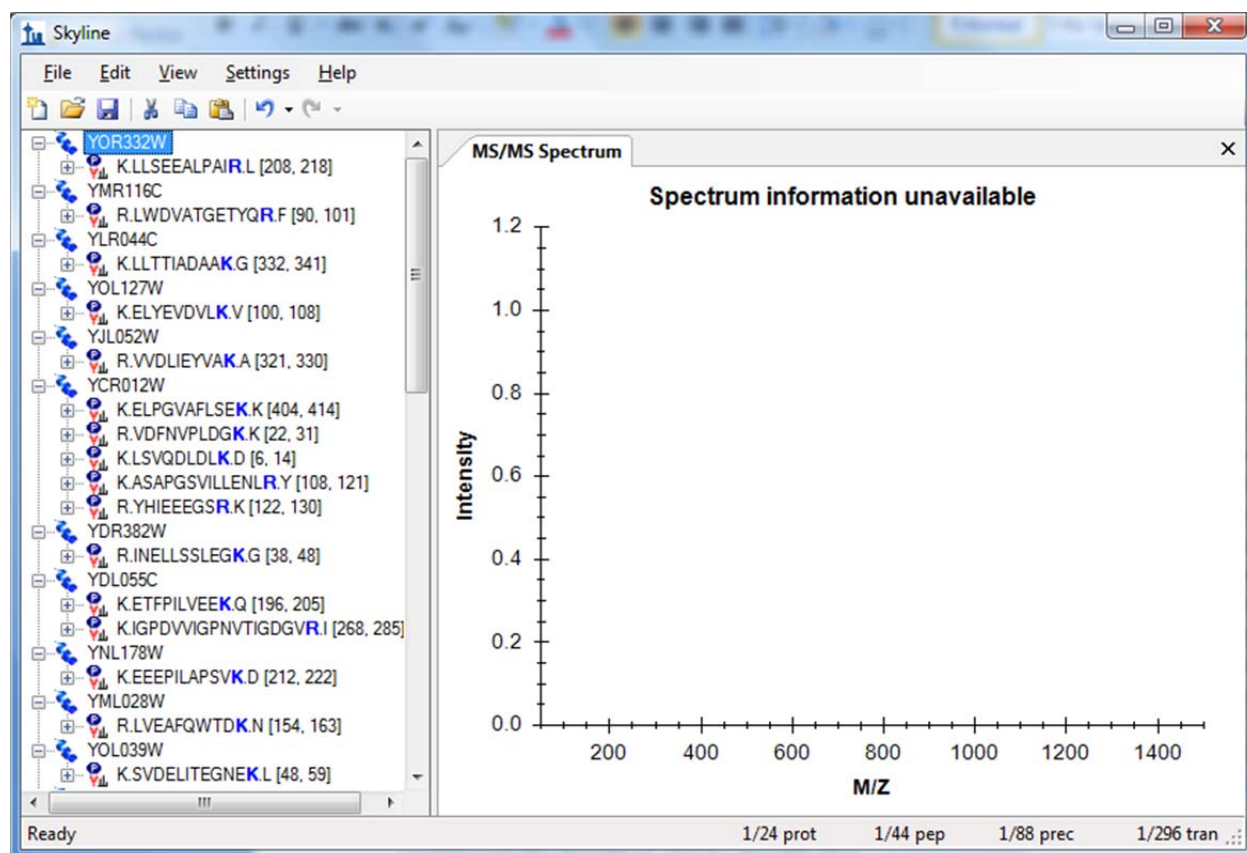
- Use Microsoft Excel to open the file 'silac_1_to_4.xls' in the MRMer subfolder under the ExistingQuant folder created for this tutorial. This Excel file was created from the original 'silac_1_to_4.transition.tsv' (tab separated value) file, from the MRMer download, for an experiment involving a 1 to 4, light to heavy, ratio mix.
- Make sure the page in the spreadsheet labeled 'Fixed' on the left side of the horizontal scrollbar is active.
- Select the cells in the first 3 columns – peptide sequence (column A), precursor ion m/z (column B), product/fragment ion m/z (column C) – for all 296 rows.
- Copy the cells (ctrl-C).
- Switch back to Skyline.
- On the **Edit** menu, choose **Insert**, and click **Transition List**.
- Press ctrl-V on your keyboard to paste the copied cells.

The **Insert** form should now look something like:



The copied cells have been added along with associated protein names and descriptions. Skyline added the protein information automatically by matching the peptide sequences to the proteins in the background proteome file. To insert these peptides into the Skyline document, click the **Insert** button.

The main Skyline window should show a number of peptides grouped within their proteins. The peptide icons should contain 3 vertical lines and a baseline (▮), like a very small MS/MS spectrum, in the lower right corner (▮). The presence of this image indicates the peptide has an associated MS/MS library spectrum. The peptide label should highlight in blue the C-terminal Lysine or Arginine, indicating the stable isotope labeled amino acid in the heavy, labeled form:

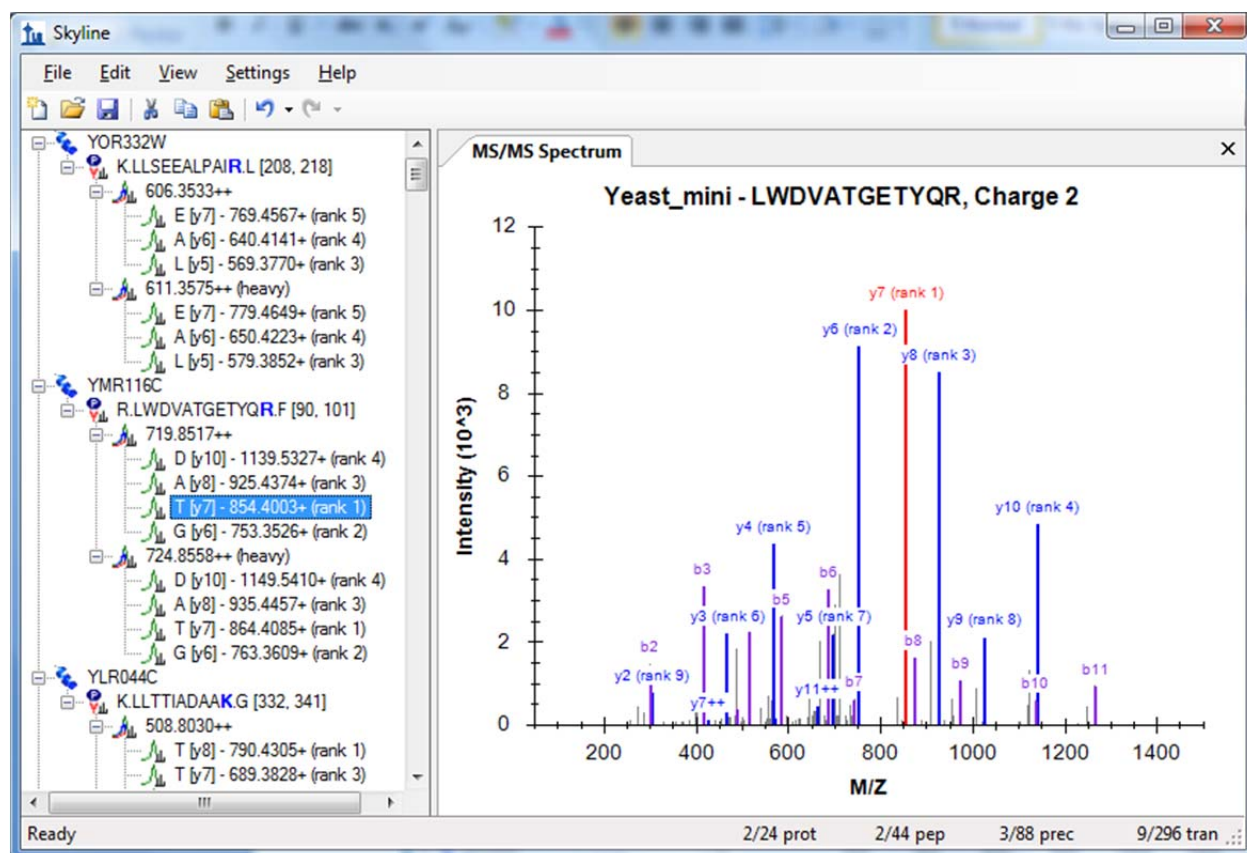


You can also see at the bottom right corner of the window, in the status bar, the indicator “296 tran”, confirming that all 296 transitions from the MRMer transition list were added to the document. To the left, also in the status bar, you can see that the document contains 24 proteins, 44 peptides and 88 precursors, or 2 precursors per peptide.

To have a closer look at the precursors and transitions in the document, do the following:

- On the **Edit** menu, choose **Expand All** and click **Precursors**.

Take some time to select individual peptides and transitions in the peptide view. Review the transitions, and how their product ion peaks are ranked by intensity in the MS/MS library spectra. As you change selection in the peptide tree view, the MS/MS spectrum chart will update to show the spectrum that matches the current peptide, and the peak matching the selected transition will be highlighted in red:



You will notice that not all of the peptides have the most abundant product ions chosen for transitions, like the one shown in the image above, and not all of the spectra look as well matched either.

If you do not see the b-ions or the doubly charged ions highlighted, you can have Skyline display them by making the following menu selections:

- On the **View** menu, choose **Ion Types** and click **B**.
- On the **View** menu, choose **Charges** and click **2**.

You may have noticed that Skyline shows the same spectrum for both the light and heavy precursors. This spectral library may contain only spectra for the light precursor, but even if the library contains matches for both light and heavy, Skyline will use only one (by default the light) to avoid having to worry about different intensity rankings between two MS/MS spectra. If the library contains only the spectrum matching the heavy, labeled form of the peptide, then Skyline will use that spectrum to rank transitions for both light and heavy precursors.

Importing Data

Of course, the most interesting reason to create a Skyline document like this from an existing transition list is to use Skyline to examine data collected on a triple quadrupole MS instrument using the original transition list.

To import the data supplied with the MRMer publication into the document you have created, perform the following steps:

- On the **File** menu, click **Save As**.
- Navigate to the MRMer subfolder under the ExistingQuant folder created earlier.
- Enter 'MRMer' in the **File name** field.
- Click the **Save** button.
- On the **File** menu, choose **Import** and click **Results**.
- Click the **OK** button on the **Import Results** form.
- Select the 'silac_1_to_4.mzXML' file in the file list. The original raw file (not available), from a Waters Quattro Premier, was converted to mzXML, because MRMer lacked the ability to read instrument native data file formats.
- Click the **Open** button.

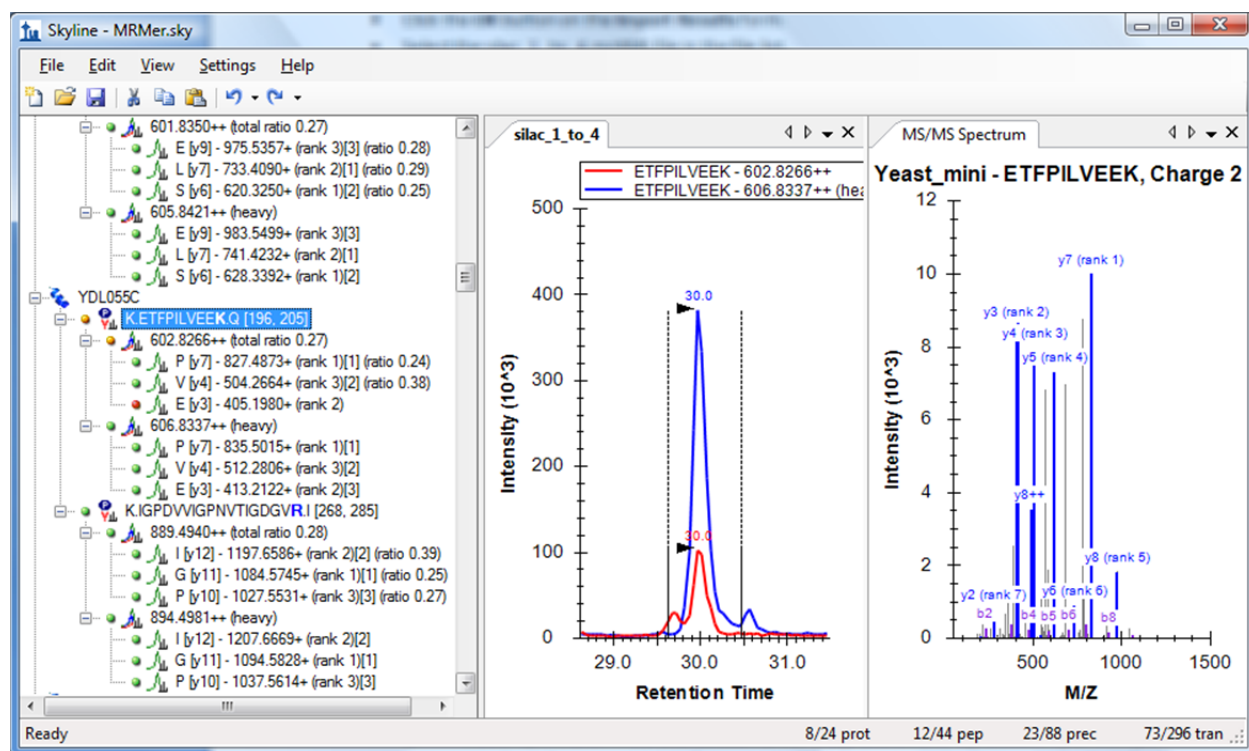
Skyline begins importing the file into its high-performance data cache, where it will require much less disk space, and from which Skyline can retrieve the information it needs very quickly. Progress is displayed in the status bar at the bottom of the Skyline window.

Once the import completes, transitions that have measured signal between the integration boundaries, displayed as dashed black lines, will have green circles added to the left of the transition icon. Transitions without a peak that can be included in the chosen peak group show a red circle. Precursors and peptides containing transitions with only green circles also show green circles. This is very nice data. You will see mostly green circles.

To see a transition with a red circle, do the following:

- On the **Edit** menu, click **Find Peptide** (ctrl-F).
- Enter 'ETFP' in the **Sequence fragment** field.
- Click the **Find Next** button.

This should leave Skyline looking something like:

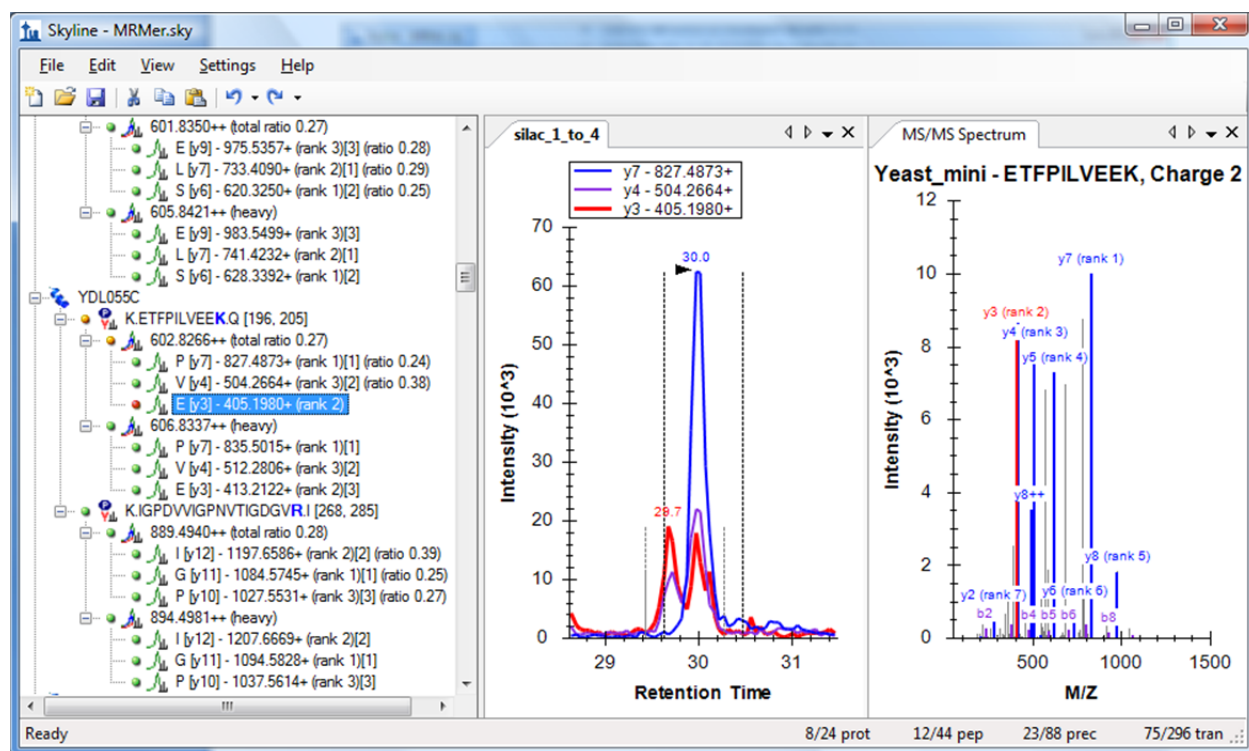


If instead, the chart panes in your Skyline window are arranged stacked on top of each other, you can rearrange them by clicking on one of the chart tabs, and dragging it to a new location. You can also change the proportions allocated to the various panes by clicking and dragging the splitter bars between them.

If the chromatogram view is not as zoomed in as it appears in the image above, do the following:

- On the **View** menu, choose **Auto-Zoom** and click **Best Peak** (F11).

To gain a better understanding of why the **y3** ion for this peptide is not included in the chosen peak group, select it in the peptide view. This should change Skyline to look like:



If you do not see chromatograms for all three transitions, as shown above, do the following:

- On the **View** menu, choose **Transitions** and click **All** (shift-F10).

Now you can see that both y3 and y4 appear to have some interference causing them to display two peaks without complete separation. These are clearly not caused by the same peptide, because they are not present for y7, and relative intensities between the two transitions differ between the two peaks.

If you were still in the process of refining this method, you might try measuring y5 and y8 next time, as the MS/MS library spectrum indicates they might be measurable. If, however, you really want at least an initial measurement from this data, you have two options:

1. Remove peaks affected by interference.
2. Adjust the peak boundaries to exclude the interfering region.

At the MacCoss lab we favor the first option, as the second will introduce unknown variance based on human judgment of the boundary of the interference, which is not really known. In this tutorial, however, you will try both options.

Removing a Transition Peak with Interference

To remove the y4 transition from the light peak group, do the following:

- Right-click on the chromatogram graph.
- On the right-click menu, choose **Remove Peak** and click **y4 - 504.2664+**.

In the peptide view, you should see the text '(ratio 0.38)' disappear from the end of the light transition, and the precursor ratio '(total ratio 0.27)' change to '(total ratio 0.24)'.

The precursor total area ratio is a weighted mean, using the internal standard peak area as the weights, which simplifies algebraically to:

$$\frac{light1 + light2 + \dots + lightn}{heavy1 + heavy2 + \dots + heavyn}$$

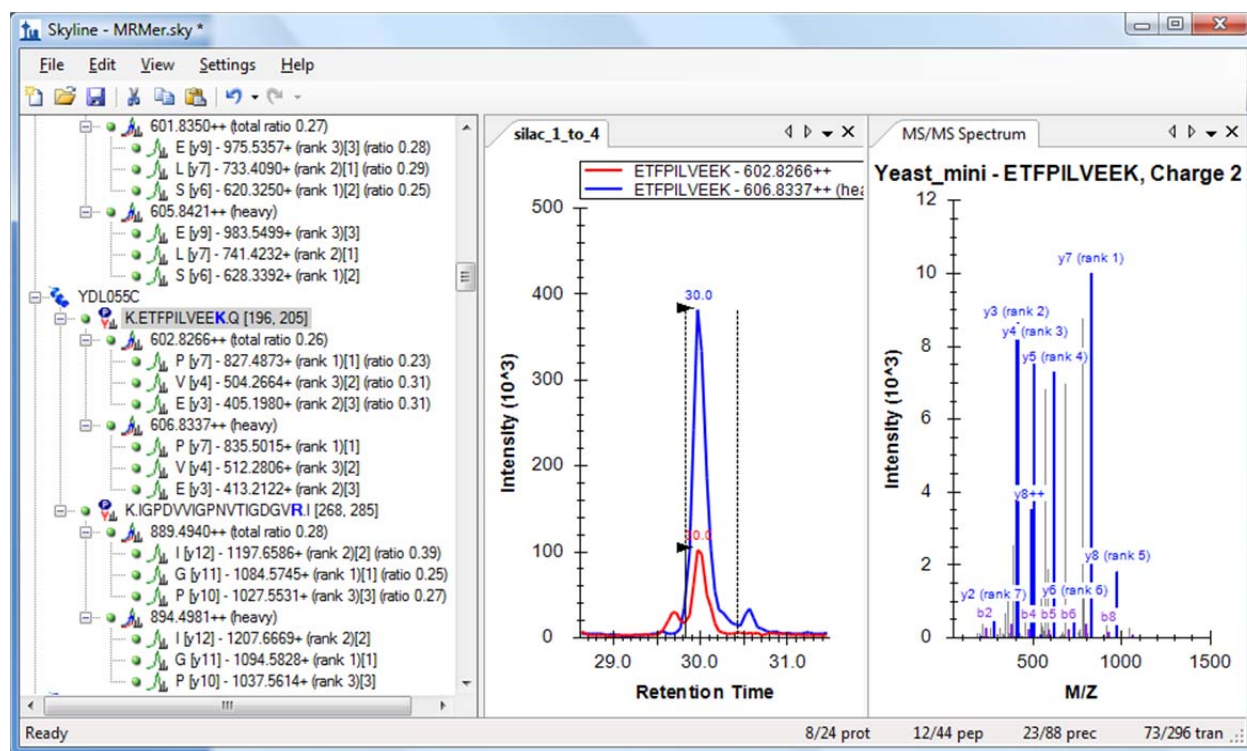
Removing either a light or heavy peak removes the peak for its matching transition. Hence, when only one pair of transitions remain, as with y7 in this case, the ratio between the light and heavy peaks of that transition (here 0.24) will also be the total area ratio for the precursor.

Adjusting Peak Boundaries to Exclude Interference

To adjust the peak integration boundaries in an attempt to remove interference from the quantitative measurements, perform the following steps:

- On the **Edit** menu, click **Undo** (ctrl-Z), to undo the peak removal from the last section.
- Select the peptide 'ETFPILVEEK'.
- Click the mouse below the x-axis just right of where the light (red) chromatogram reaches a minimum between the desired peak and the interference peak (about 29.8 minutes), and drag to where the heavy (blue) encounters a second peak at its right edge (about 30.4 minutes).

This should leave Skyline showing something like:



In this case, y4 and y3 show ratios of 0.31 and y7 shows 0.23, yielding a weighted mean, precursor total ratio of 0.26.

The two total ratio values 0.24 and 0.26 produced by the two different techniques of dealing with interference are equally close to the true ratio of 0.25 for this 1 to 4 (light to heavy) SILAC mix. The ratios of the peaks that showed interference (y3 and y4 for the EFP peptide), however, are closer to 1:3 than 1:4, calling into question how well this manual adjustment technique is actually working, and highlighting the reason we prefer removing such transitions entirely from quantitative calculations.

Further inspection of the data in this document will show you that most of the ratios for these peptides are extremely close to the expected value of 0.25. Also where a precursor has 4 or more transitions, Skyline displays a dot-product (dotp) value between the peak areas and the matching MS/MS peak intensities. Most of these are quite close to 1.0, for an exact match.

Finally, before moving on to the second document in this tutorial, you may notice that 2 peptides (K.YVDPNVLPETESLALVIDR.L and K.FPEPGYLEGVK.T) have transitions with only blank space where the others have green or red circles. This means the mzXML file you imported contained no data for these transitions. You can open the mzXML file in a text editor and search for the precursor m/z values to verify yourself that the precursors lack the transitions indicated by the original transition list. These types of anomalies are fairly typical of working with transition lists created either manually or by tools receiving less use and testing than Skyline.

Preparing a Document for CPTAC Study 7

In this next section, you will be working with the inter-laboratory CPTAC Study 7², completed by the Verification Working Group before even the initial release of Skyline version 0.1. Methods were created using spreadsheets and the resulting mass spectrometer data was analyzed using vendor-specific software.

Preparing a Document to Accept the Study 7 Transition List

Again the first task is to create a Skyline document from an existing transition list. The first step in inserting any transition list into Skyline is examining the transition list to understand what settings Skyline will require to recognize the m/z values in the list. To begin this examination, use Microsoft Excel to open the file 'Study7 transition list.xls' in the Study 7 subfolder of the ExistingQuant folder you created for this tutorial.

You should be presented with a spreadsheet that looks something like:

Protein	Signature Peptide*	Identifier	MH+ (mono)	z	Q1	Q3	DP	CE	CXP	Fragment Ion Type
APR	AGLCQTFVYGGCR	bi0173	1488.7	2	744.8	858.39	120	35	16	y7
				2	744.8	959.44	120	38	16	y8
				2	744.8	1087.5	120	40	16	y9
	AGLCQTFVYGGCR	bi0081	1493.7	2	747.3	863.41	120	35	16	y7
				2	747.3	964.46	120	38	16	y8
LEP	INDISHTQSVSAK	bi0167	1399.7	3	467.2	586.8	61	20	12	y11 ²⁺
				3	467.2	643.82	61	20	12	y12 ²⁺
				3	467.2	720.39	61	20	12	y7
	INDISHTQSVSAK	ni0101	1407.3	3	469.9	590.81	61	20	12	y11 ²⁺
				3	469.9	647.83	61	20	12	y12 ²⁺
MYO	LFTGHPETLEK	bi0171	1271.7	3	424.6	506.26	66	18	12	y9 ²⁺
				3	424.6	579.79	66	19	10	y10 ²⁺
				3	424.6	716.38	66	24	13	y6
	LFTGHPETLEK	ni0102	1279.7	3	427.2	510.27	66	18	12	y9 ²⁺
				3	427.2	583.8	66	19	10	y10 ²⁺

You can tell that this is a spreadsheet created manually by someone who put significant effort, using borders, merged cells and highlighting, into making this set of transitions intelligible to other people, a job which Skyline now handles automatically.

Each peptide in this list has a light and heavy form. In the 'Signature Peptide' column for each heavy peptide a single stable isotope labeled amino acid residue is highlighted in red. Scroll down through the entire list, and you will see that there are 4 labeling schemes:

1. 6 peptides have C-terminal Lysine labeled, with an 8 Dalton increase.
2. 2 peptides have C-terminal Arginine labeled, with a 6 Dalton increase.
3. 2 peptides have an internal Valine labeled, with a 5 Dalton increase.
4. 1 peptide has an internal Leucine labeled, with a 6 Dalton increase.

This labeling scheme is impossible to represent with only global modifications, like the ones used for the MRMer document, because some of the Lysine and Arginine labeled peptides also contain internal Valines and Leucines. The simplest strategy for dealing with this is to use global modifications for C-terminal Lysine and Arginine again, as you did for the MRMer document, and then apply the Valine and Leucine modifications manually.

To prepare a new document with appropriate modifications for the Study 7 transition list, perform the following steps:

- On the Skyline toolbar, click the **Save** button to save changes to the MRMer document.
- On the Skyline toolbar, click the **New Document** button on the far left.
- On the **Settings** menu, click **Peptide Settings**.
- Click the **Modifications** tab (if necessary).
- Click the **Edit List** button beside the **Isotope modifications** list.
- Select the 'Label:13C(6)15N(4) (C-term R)' modification, so that your new modification will be added below it.
- Click the **Add** button on the **Edit Isotope Modifications** form.
- Choose 'Label:13C(6) (C-term R)' from the **Name** dropdown list of the **Edit Isotope Modification** form.

The **13C** checkbox are automatically checked, to tell Skyline to use ^{13}C for all carbon atoms present in an Arginine molecule, for a total mass shift of 6 Daltons ($6 \times ^{13}\text{C}$).

The **Edit Isotope Modification** form should now look like:

The screenshot shows the 'Edit Isotope Modification' dialog box. The 'Name' field is a dropdown menu currently showing 'Label:13C(6) (C-term R)'. To the right of this field are 'OK' and 'Cancel' buttons. Below the name field are two dropdown menus: 'Amino acid' set to 'R' and 'Terminus' set to 'C'. Underneath these is a checkbox for 'Chemical formula' which is unchecked. Below that are four checkboxes: '13C' (checked), '15N' (unchecked), '18O' (unchecked), and '2H' (unchecked). Further down are two text input fields: 'Monoisotopic mass' containing '6.020129' and 'Average mass' containing '5.955029'. At the bottom is a dropdown menu for 'Relative retention time' set to 'Matching'.

To finish preparing the document for the Study 7 transition list, do the following:

- Click the **OK** button in the **Edit Isotope Modification** form.
- Click the **OK** button in the **Edit Isotope Modifications** form.
- Check the 'Label:13C(6) (C-term R)' modification you just created.
- Uncheck the 'Label:13C(6)15N(4) (C-term R)' modification created for the MRMer document, if not unchecked.
- Make sure the checkbox for the 'Label:13C(6)15N(2) (C-term K)' modification created for the MRMer document is still checked.

- Make sure the checkbox in the **Structural modifications** list for 'Carbamidomethyl Cysteine' is still checked.
- Click the **Library** tab.
- Uncheck the 'Yeast_mini' library used in the MRMer document, if not unchecked.
- Click the **Digestion** tab.
- Choose 'None' in the **Background proteome** droplist, if not already 'None'.
- Click the **OK** button in the **Peptide Settings** form.

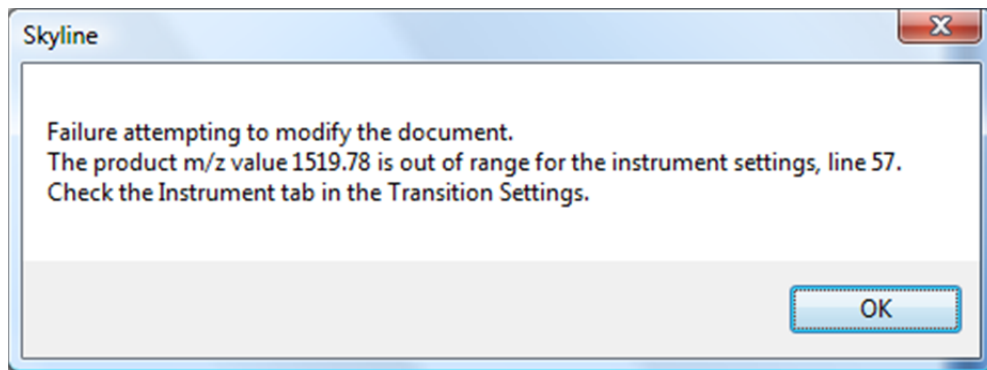
Pasting a Transition List into the Document

Now switch back to Excel, and click on the 'Raw' tab in the Study 7 spreadsheet. On this page, you will see the raw transition list, with 66 transitions, that was imported into the 4000 QTRAP instruments used in the study. Since you know Skyline still lacks the information in its settings to handle the heavy transitions for the Valine and Leucine labeled peptides, now click on the 'Simple' spreadsheet tab, left of the horizontal scrollbar at the bottom, where you will find a version of the same page with those 9 transitions removed.

To add these transitions to your new Skyline document, perform the following steps:

- Select all 6 columns and 57 rows on the 'Simple' page of the Study 7 spreadsheet.
- Copy the cells (ctrl-C).
- Switch back to Skyline.
- On the **Edit** menu, click **Paste** (ctrl-V).

Skyline should present the following error message:



Messages like this are not uncommon when working with transition lists created outside Skyline. Others are presented in the Skyline instructional video on this subject ([Video 3: Existing Experiments](#)). Some of the most common reasons for seeing an error of this type are:

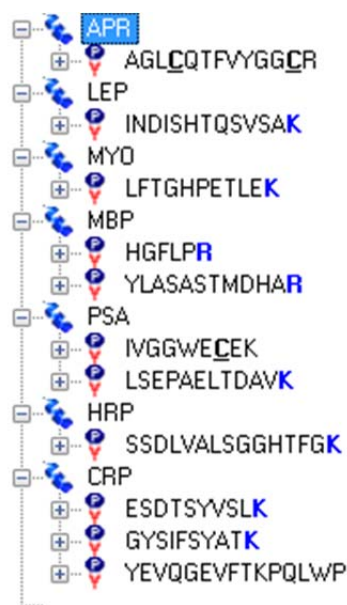
1. Forgetting to specify a necessary modification
2. Errors in the m/z values created manually or by other tools
3. Including m/z values outside the bounds of the current instrument settings

This last potential cause is the case for the current transition list, and you can see the message directs you to the **Instrument** tab in the **Transition Settings** form.

To correct this issue, perform the following steps:

- Click the **OK** button in the error message.
- On the **Settings** menu, click **Transition Settings**.
- Click the **Instrument** tab.
- Enter '1800' in the **Max m/z** field.
- Click the **OK** button.
- On the **Edit** menu, click **Paste** (ctrl-V) again.
- On the **Edit** menu, choose **Collapse All** and click **Peptides** (ctrl-shift-D).

This should leave the Skyline peptide view looking like:



Adjusting Modifications Manually

Eight peptides display bold, blue C-terminal K or R, but the other 3 lack a labeled amino acid. Those are the ones that need V or L explicitly labeled, because these modifications cannot be achieved through the document settings.

To specify an isotope modification on the V in the first peptide, perform the following steps:

- Select the 'AGLCQTFVYGGCR' peptide.
- On the **Edit** menu, click **Modify Peptide**.
- Select the blank entry from the **Isotope heavy** droplist for the C-terminal R to remove the stable isotope label from this Arginine.
- Select '<Add...>' from the **Isotope heavy** droplist for the V residue in this peptide.
- Choose 'Label:13C' from the **Name** dropdown list of the **Edit Isotope Modification** form.

The **Edit Isotope Modification** form should look like:

Edit Isotope Modification

Name:

Amino acid: Terminus:

☐ Chemical formula

☒ 13C ☐ 15N ☐ 18O ☐ 2H

Monoisotopic mass: Average mass:

Relative retention time:

This modification will apply a varying mass shift to any amino acid, depending on how many Carbon atoms it contains. Click the **OK** button to return to the **Edit Modifications** form, which should now look like:

Edit Modifications

Structural:		Isotope heavy:
<input type="text"/>	A	<input type="text"/>
<input type="text"/>	G	<input type="text"/>
<input type="text"/>	L	<input type="text"/>
Carbamidomethyl Cy:	C	<input type="text"/>
<input type="text"/>	Q	<input type="text"/>
<input type="text"/>	T	<input type="text"/>
<input type="text"/>	F	<input type="text"/>
<input type="text"/>	V	Label:13C
<input type="text"/>	Y	<input type="text"/>
<input type="text"/>	G	<input type="text"/>
<input type="text"/>	G	<input type="text"/>
Carbamidomethyl Cy:	C	<input type="text"/>
<input type="text"/>	R	<input type="text"/>

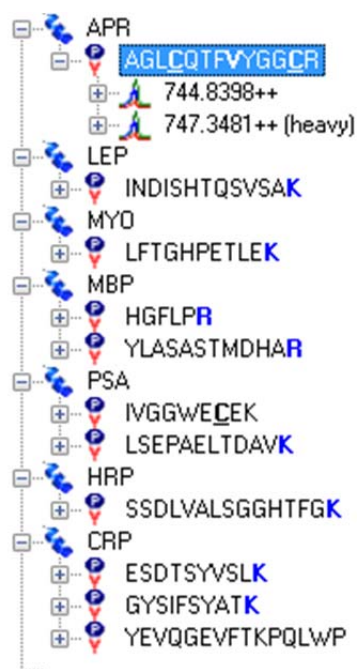
☐ Create copy

Click the **OK** button on the **Edit Modifications** form to return to the document.

The Valine in the selected peptide will not yet be bold, because the peptide still does not contain a heavy precursor. To add the heavy precursor now, do the following:

- Hover the mouse over the peptide, and click the drop arrow that appears to its right.
- Check the '747.3481++ (heavy)' checkbox in the pick list that appears.
- Click the green check button in the top left corner (or press Enter).

The peptide view should now look like:



Now expand both the '744.8398++' precursor and the '747.3481++ (heavy)' precursor, clicking on the '+' symbol to the left of the light and heavy precursor ions, to verify that they contain matching transitions, and they differ by 5 Daltons, as expected.

To create labeled precursors for the two remaining peptides, perform the following steps:

- Right-click on the peptide 'IVGGWECEK', and click **Modify**.
- Select the blank entry from the **Isotope heavy** droplist for the C-terminal K to remove the stable isotope label from this Lysine.
- Select the 'Label:13C' modification from the **Isotope heavy** droplist for the V residue in this peptide.
- Click the **OK** button.
- Hover the mouse over the peptide, and click the drop arrow that appears to its right.
- Check the '541.7637++ (heavy)' checkbox in the pick list that appears.
- Click the green check button (or press Enter).

- Right-click on the peptide 'YEVQGEVFTKPQLWP', and click **Modify**.
- Select the 'Label:13C' modification from the **Isotope heavy** droplist for the L residue in this peptide.
- Click the **OK** button.
- Hover the mouse over the peptide, and click the drop arrow that appears to its right.
- Check the '913.9746++ (heavy)' checkbox in the pick list that appears.
- Click the green check button (or press Enter).

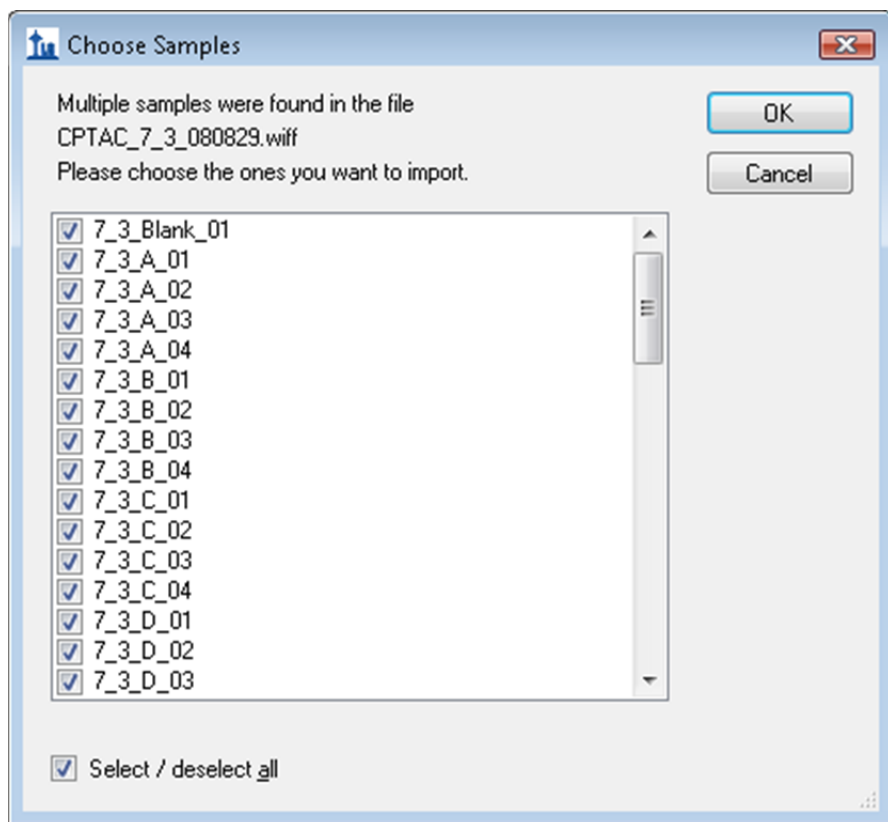
You now have a Skyline document that accurately reflects the information in the original Study 7 transition list. Save this document to 'Study 7.sky' in the Study 7 subfolder of the ExistingQuant folder.

Importing Data from a Multiple Sample WIFF File

Thanks to the support of all four major triple quadrupole vendors, Skyline now installs with full support for importing all of their formats without requiring any conversion. This means you can import data into this document from one of the sites that used a 4000 QTRAP to measure these transitions by performing the following steps:

- On the **File** menu, choose **Import** and click **Results**.
- Click the **OK** button on the **Import Results** form to import single-injection replicates.
- Select the file 'CPTAC_7_3_080829.wiff' in the Study 7 folder.
- Click the **Open** button in the **Import Results Files** form.

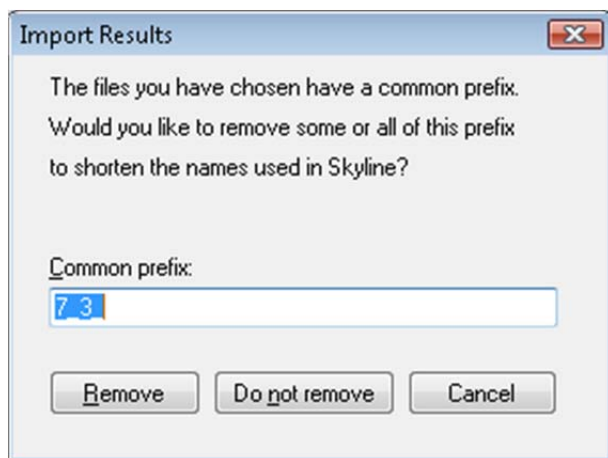
Skyline may take a second or two to read the list of sample names in this multiple sample WIFF file, but then it should present you with a form that looks like:



For this tutorial, to reduce the time that will be required to complete the import:

- Uncheck the entries containing the text 'Blank' (1 sample), 'QC' (4 samples) and 'gradientwash' (4 samples).
- Uncheck the 'A2' (4 samples) and 'A3' (4 samples) entries at the end also.
- Click the **OK** button.

Skyline should present the following message to allow you to remove the repeated prefix '7_3_' from all of the names it will use to display information about these replicates:



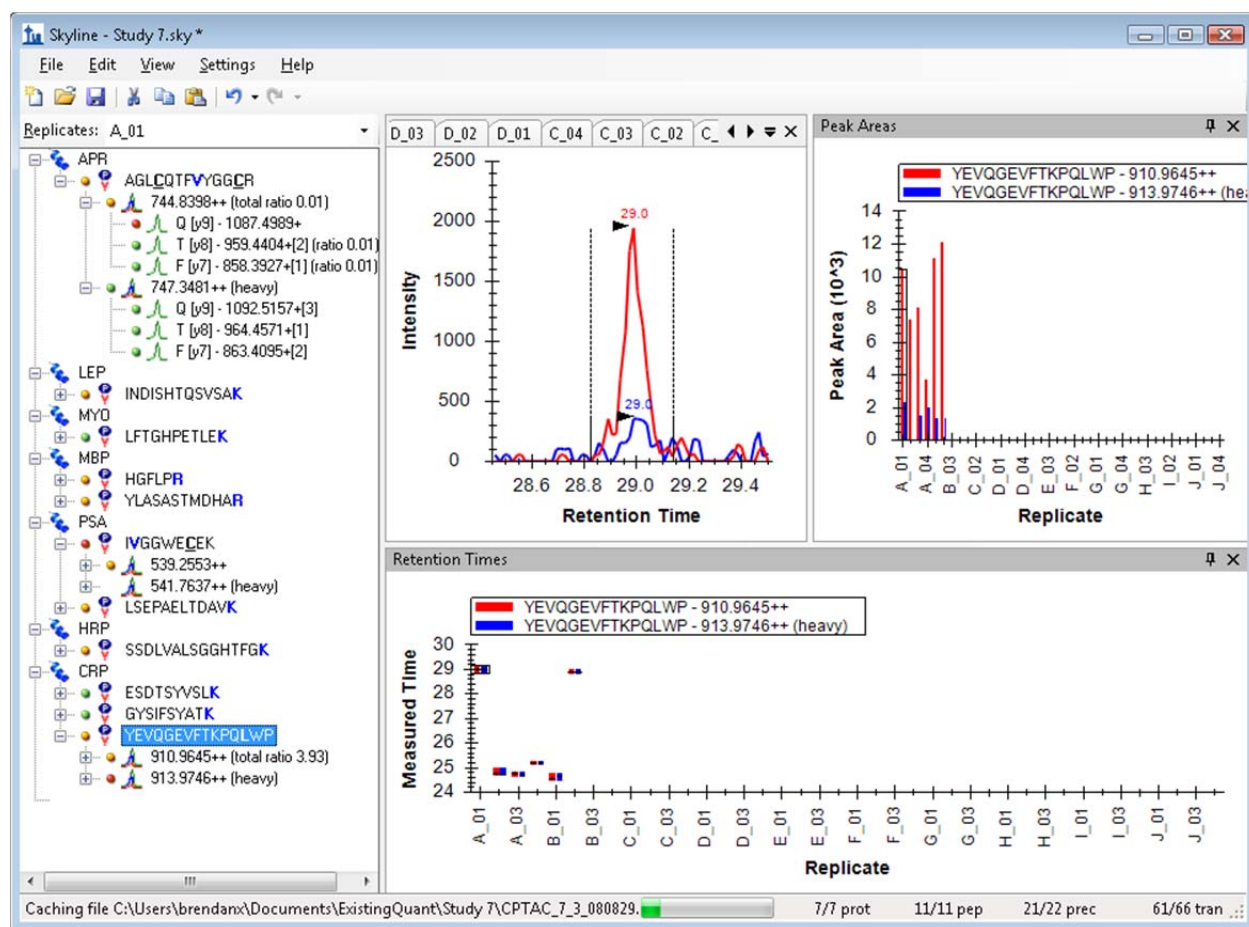
Click the **Remove** button to accept this operation.

Skyline will begin importing the data from this WIFF file into its high-performance data cache file (Study 7.skyd), where it can be accessed much faster, and where all imported data for a document is compressed into a single file for easy sharing.

Inspecting and Adjusting Peak Integration

While Skyline is importing the raw data, which may take several minutes to complete, you can begin rearranging the graph views for optimal viewing. To show and reposition the peak area and retention time replicate comparison views, do the following:

- On the **View** menu, choose **Retention Times** and click **Replicate Comparison** (F8).
- Click and drag the window to the bottom edge of the Skyline window to dock it there.
- On the **View** menu, choose **Peak Areas** and click **Replicate Comparison** (F7).
- Click and drag the window to the right edge of the Skyline window to dock it there.
- Adjust the view proportions to look something like the image below.



The currently selected peptide 'YEVQGEVFTKPQLWP', which was the peptide at the C-terminal end of CRP protein, was actually somewhat problematic for the Verification Working Group in Study 7. As the data is imported, you can see that Skyline still sometimes fails to integrate the peaks across its replicates

consistently. Several retention time outliers remain, and even some of the closer peaks over 25 minutes do not appear to be the same peptide, as the majority integrated at about 24.7 minutes. One clear problem is that the heavy, spiked in form is never very intense relative to the light, endogenous form.

Note that you can hover over the bars in either of the replicate charts until a hand cursor appears, and then click to navigate to the chromatogram for the corresponding replicate. You could use this to navigate to the chromatogram for each likely misidentified peak, and correct it using the same technique you used in the MRMer document, clicking and dragging below the x-axis, but for this tutorial, you can just delete this peptide, as the Verification Working Group did for their subsequent experiments.

You will see that Skyline has done a much better job of integrating the rest of the peptides in this document. In the current Skyline version 0.7, automatic peak integration is greatly improved over previous Skyline releases. As in any real dataset, however, this document contains transitions that will require some manual integration.

First, in the image above, you can see that the precursor '541.7637++ (heavy)' for the peptide 'IVGGWECEK' appears to be missing data. This is because the transition list supplied to the mass spectrometer only specified on decimal place for precursor m/z , and it was rounded incorrectly to '541.7'. You can check this on the 'Raw' tab in the Excel spreadsheet.

To get the correctly calculated precursor in this document to match up with the measured data, do the following:

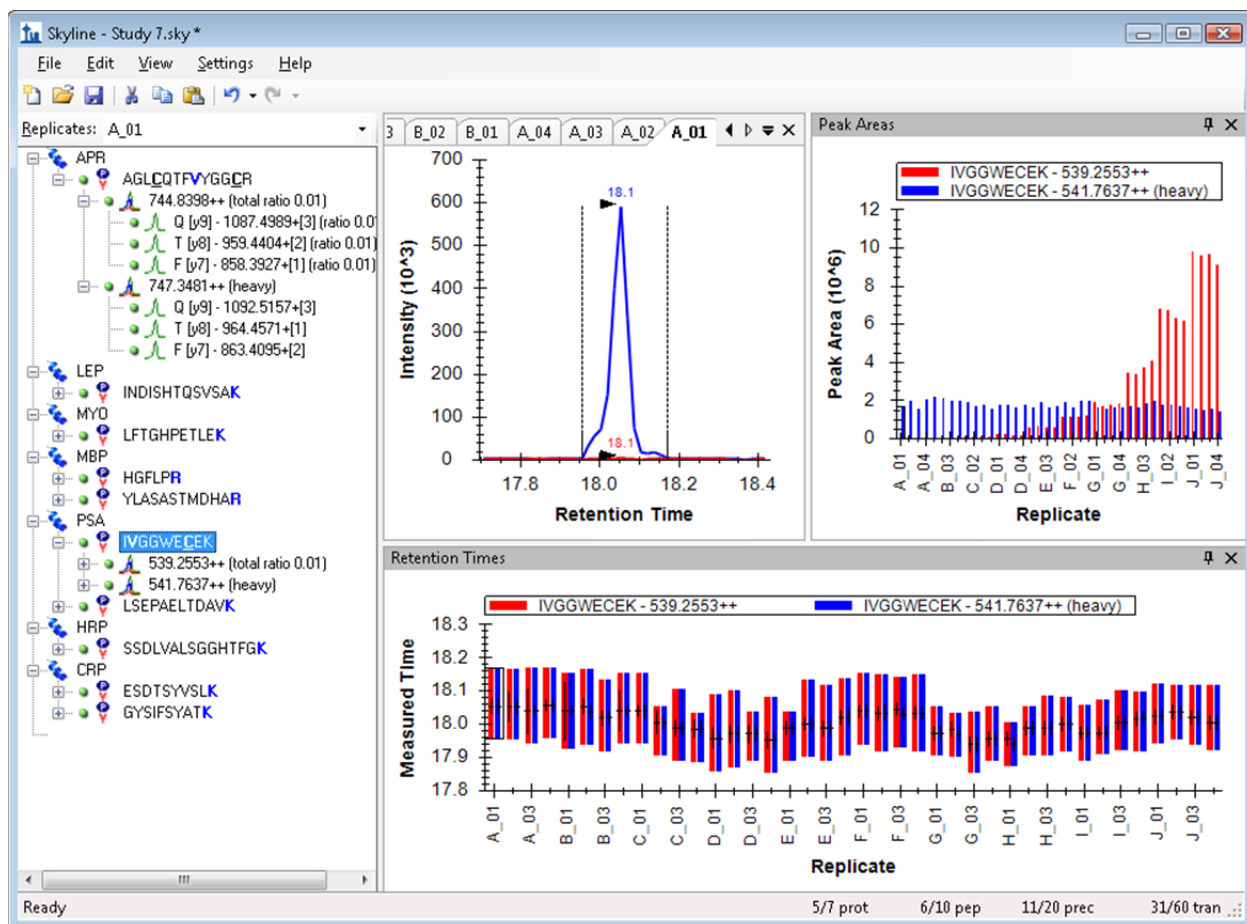
- On the **Settings** menu, click **Transition Settings**.
- Enter '0.065' in the **M/Z match tolerance** field of the **Instrument** tab.
- Click the **OK** button.

This should cause a green circle to appear beside the '541.7637++ (heavy)' precursor.

Another integration issue is that many elements in the peptide view display orange and red circles, indicating transitions with no integrated peak area. This is quite useful during certain phases of method refinement, as discussed in the [Targeted Method Refinement](#) tutorial, but for a highly refined method like this, it tends to lead to less accurate quantitative measurements. For this reason, an option to integrate peak areas for all transitions between the boundaries of the most intense peak has been added. To turn this on now, do the following:

- On the **Settings** menu, click **Integrate All**.

Skyline should now look something like:



Data Inspection with Peak Areas View

The **Peak Areas** view in the image above gives you a pretty clear idea of what the Study 7 experiment was. It was a calibration curve with each concentration measured in technical quadruplicate. You can see that the heavy isotope labeled internal standard was injected at a constant concentration, but that over 50+ injections its peak area is degrading slightly. Although in the **Retention Times** view, you can see the peptide retention time was extremely stable, perfect for use in scheduled runs.

In this section, you will focus on the **Peak Areas** view and the many options it provides for inspecting multiple replicate data sets. To give the **Peak Areas** view more room on your screen:

- Double-click in the titlebar labeled **Peak Areas**.

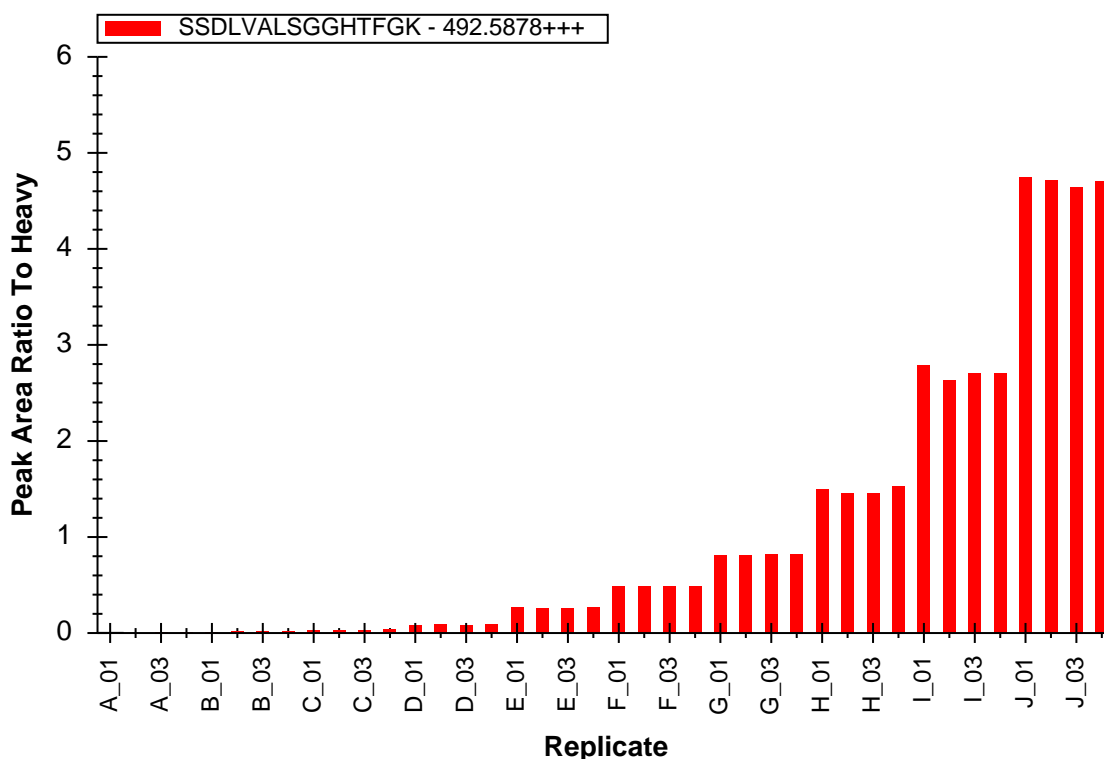
The **Peak Areas** view should pop out of the main Skyline window and float above it. Reposition it out of the way of the peptide view.

To get started select each of the 10 remaining peptides in this document, and you will see that the first peptide and the last 5 peptides present peak area charts similar to the one in the image above, while the 4 peptides between these appear much less precise.

One important reason for co-injecting the stable isotope labeled reference peptides is that they can be used to normalize the peak areas of the endogenous unlabeled peptides, which should remove some of the run-to-run variability in those measurements. To see this visually in the **Peak Areas** view, do the following:

- Right-click in the **Peak Areas** chart, choose **Normalize To** and click **Heavy**.

Review again the 6 peptides that appeared well behaved before. Selecting the peptide SSDLVALSGGHTFGK, you should now see a normalized chart like:



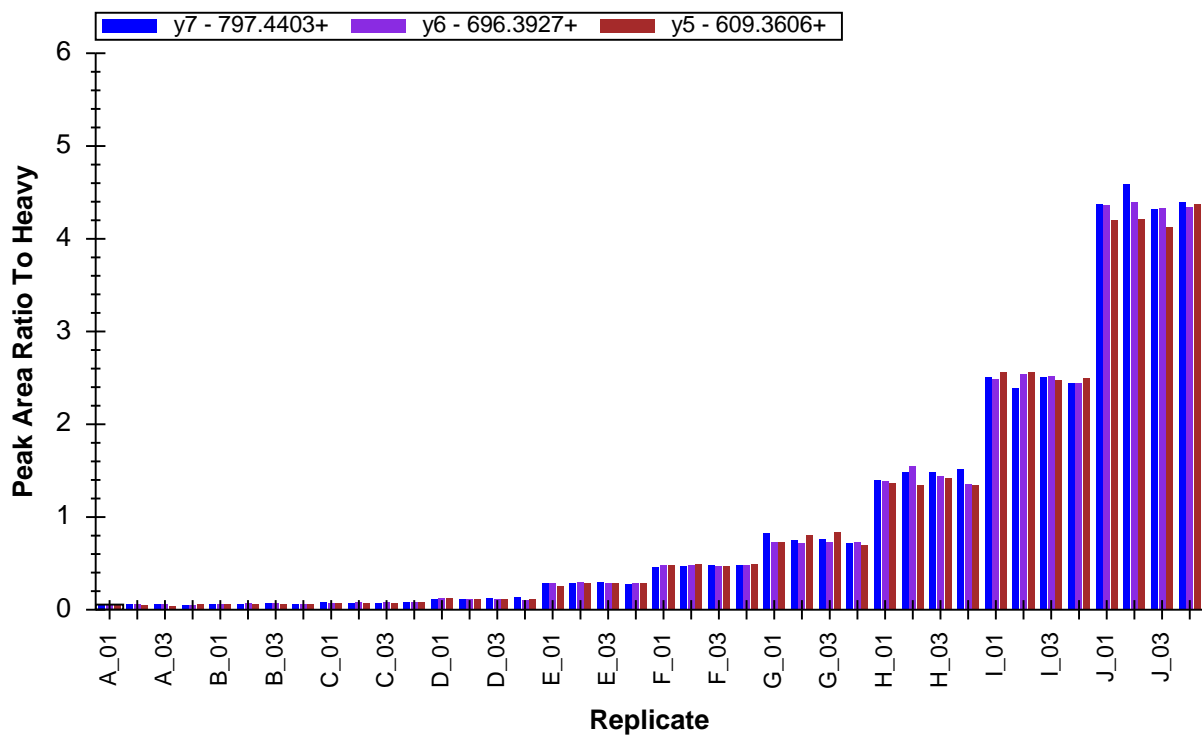
You will see that, indeed, precision among the replicates for each concentration appears to have improved.

Review the other 4 peptides, and you will see that they still do not display the expected pattern.

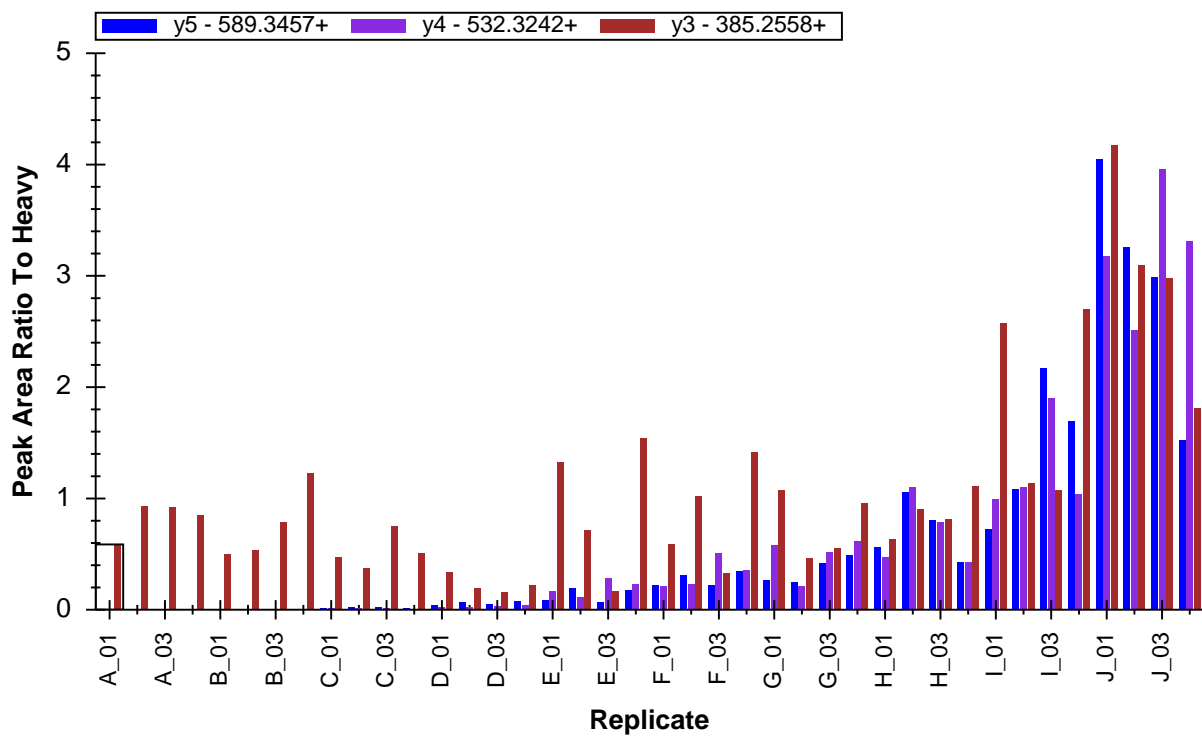
Another interesting way of looking at this normalization is by each transition separately. In a well behaved peptide, the ratio of each light transition to its heavy counterpart should be relatively similar. To review the ratios of the transitions separately, do the following:

- On the **Edit** menu, choose **Expand All** and click **Peptides** (ctrl-D).
- Select the light precursor for each peptide.

For the 6 well behaved peptides, you should see a chart like the one below, with the ESDTSYVSLK peptide light precursor 564.7746++ selected:



As expected, the ratios are quite similar. The second and third peptides (INDISHTQSVSAK and LFTGHPETLEK) are not quite as clean, but no real problems in transition ratios stick out. For the fourth peptide (HGFLPR), however, when its light 363.7059++ precursor is selected, should cause the peak area graph to look like:

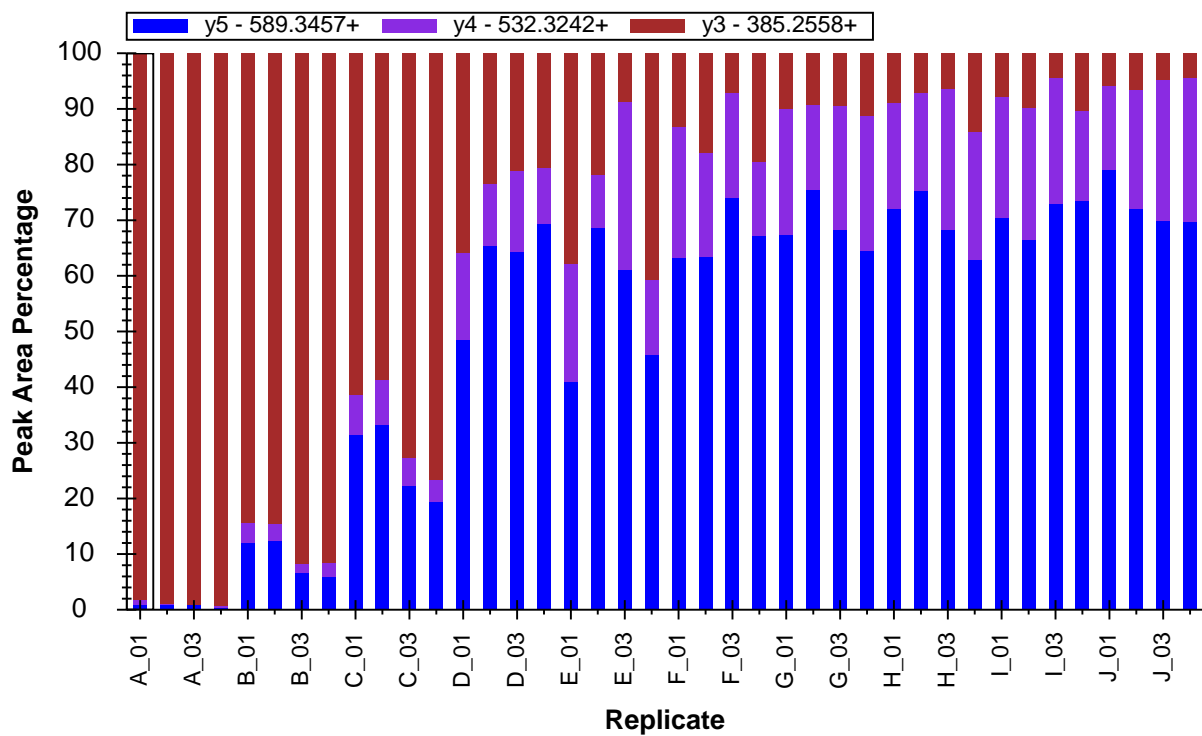


This seems to indicate some interference in the transition for y3, since its ratio, at low concentrations, is so different from the others for this peptide.

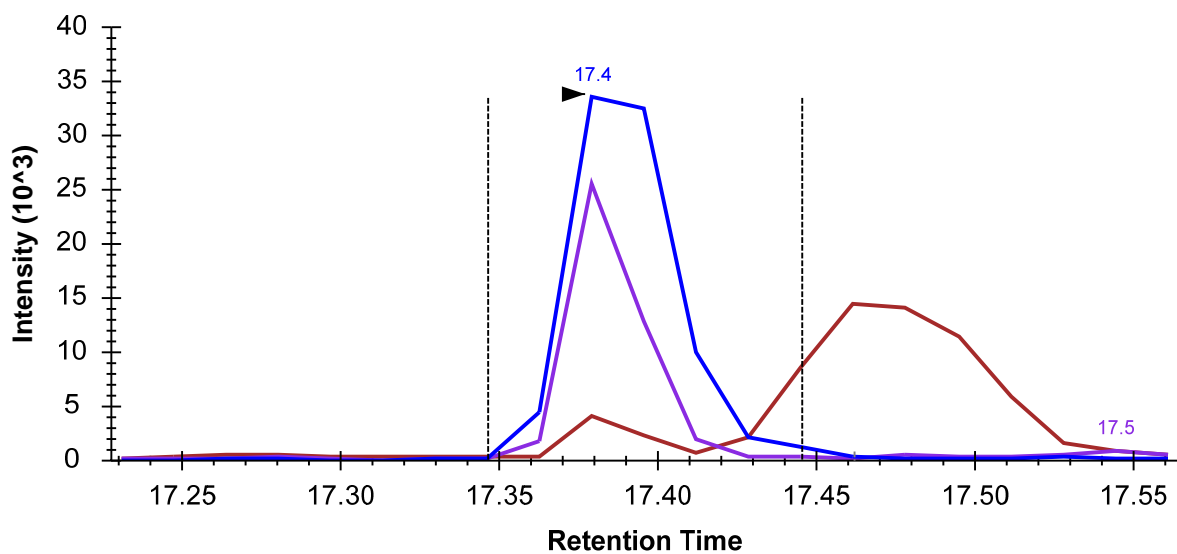
The **Peak Areas** view provides another way of inspecting the relative intensities of the transitions within a precursor. You can use it now to take another look at the HGFLPR peptide, by doing the following:

- Right-click the **Peak Areas** chart, choose **Normalize To** and click **Total**.

The chart should change to something like:



Again this chart clearly indicates interference on the transition for y3 (brown) that becomes less of a factor as the concentration of the endogenous peptide increases, beyond the E replicates. If you move the peak area view to a location where you can also see the chromatogram charts, you can click on the individual bars to see the interfering peak, which, in this case, is pretty clear, as in replicate E_03 below:

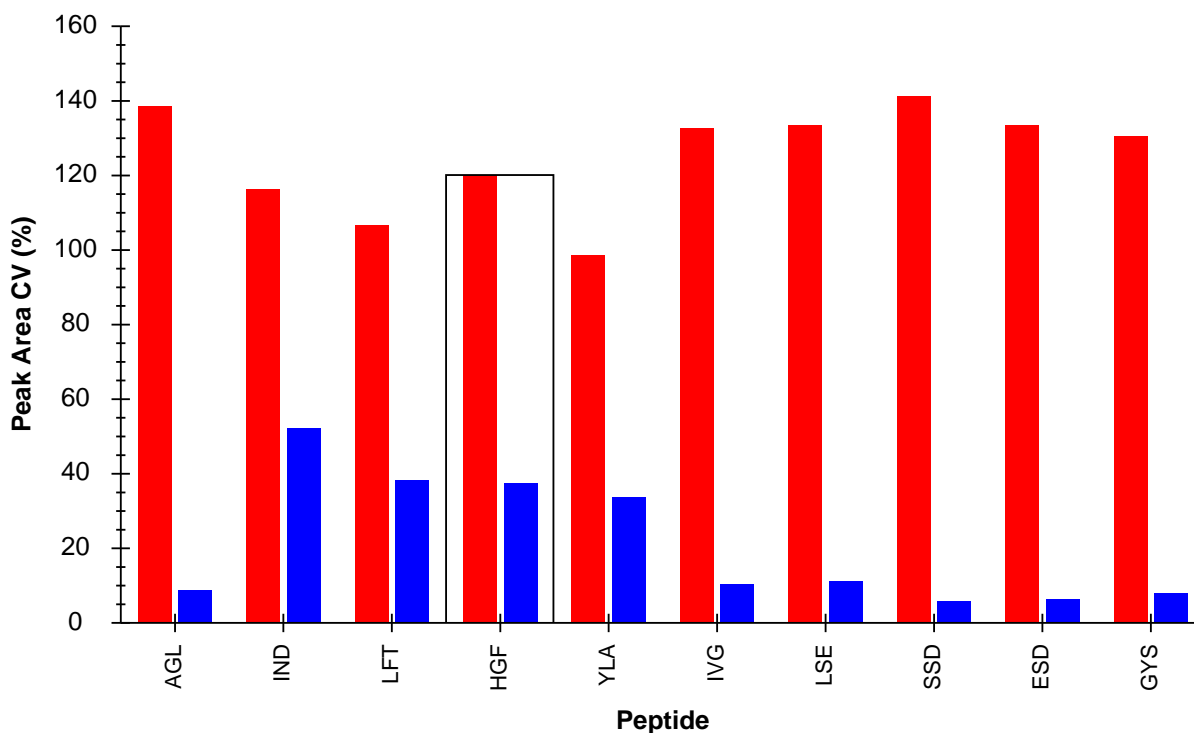


As with the case in the MRMer document, you might attempt to adjust the integration boundaries to exclude the interfering peak, but it is probably a better idea to just delete the y3 transition altogether,

especially since it never provides a very large contribution to the total peak area for the peptide. To gain some insight into the precision of these measurements, do the following:

- On the **View** menu, choose **Peak Areas** and click **Peptide Comparison** (ctrl-F7).
- On the **View** menu, choose **Transitions** and click **Total** (ctrl-F10).
- Right-click on the **Peak Areas** chart and click **CV Values**.

The **Peak Areas** chart should have changed to look something like:



If the peptides do not appear in this order, do the following:

- Right-click on the **Peak Areas** chart, choose **Order** and click **Document**.

Of course, for analyte peptides, shown in red, the coefficients of variance (CV) are very high and of no real interest, because the data set contains 10 different concentrations points for the analyte proteins and their peptides. The CV values for the heavy peptides, however, shown in blue, are informative, since they were supposed to be injected into all samples at a constant concentration. Given what you have seen so far, it should not be surprising that the 6 peptides identified as clearly displaying the expected concentration changes also have CV values around 10% or lower, while the other 4 peptides have CV values closer to 40% or even %50.

With just a few simple operations in Skyline, you have learned things about this data set that required weeks and the involvement of statisticians and programmers for the Verification Working Group to learn in the original study. If you have done the [Targeted Method Refinement](#) tutorial, you may now be imagining why you would want to run a refinement cycle involving a scheduled multi-replicate data set

to better understand how your targeted peptides respond in this setting before measuring them on high value samples.

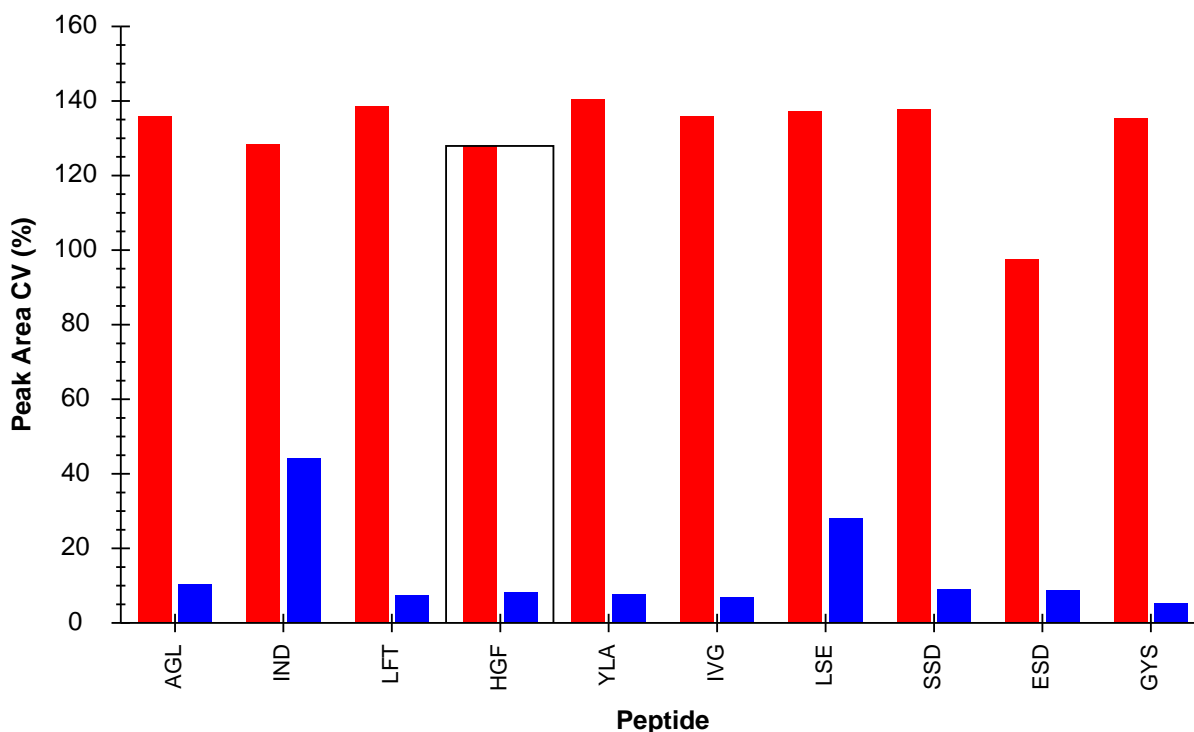
Further Exploration

Eight different labs participated in Study 7, and each generated several data sets similar to the one you have been reviewing in this tutorial. Not all of them, however, experienced the same issues in the same ways. The data from a different site and a different sub-section of this study is also included with this tutorial. In this case, the document has already been created and the data set imported.

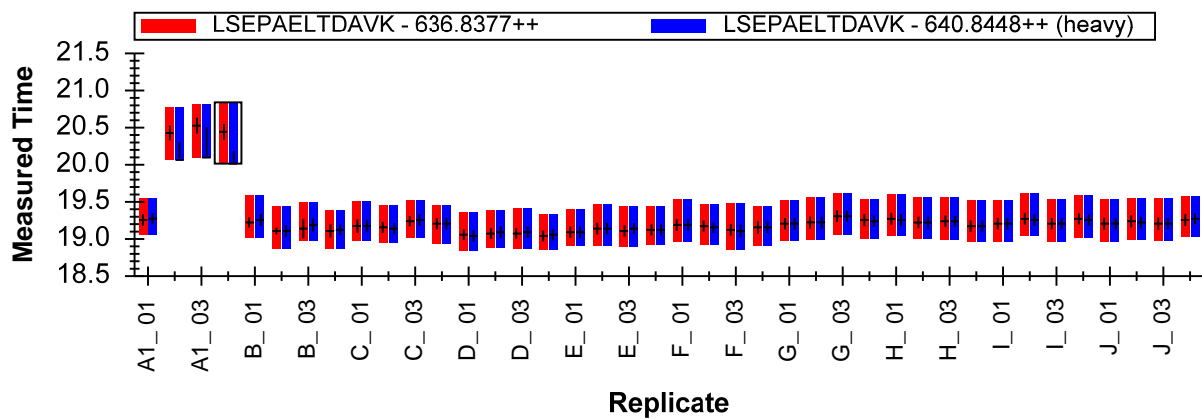
To open the document with Study 7-II data from site 52, perform the following steps:

- On the **File** menu, click **Open** (ctrl-O).
- Navigate to the Study II subfolder under the Study 7 subfolder of the ExistingQuant folder created at the beginning of this tutorial.
- Select the 'Study 7ii (site 52).sky' file.
- Click the **Open** button.

The file will open quickly, and you will see that the CV values for the injected isotope labeled standards are different, appearing as in the chart below:



The peptide INDISHTQSVSAK is the only one of the 4 from the first data set that still has a CV around 40%, while the peptide LSEPAELTDAVK now has a CV around 25%. If you look at the **Replicate Comparison** graph, in the **Retention Times** view, however, you will see that Skyline has chosen the wrong peaks for 3 of the replicates (though this will likely be fixed in a future release):

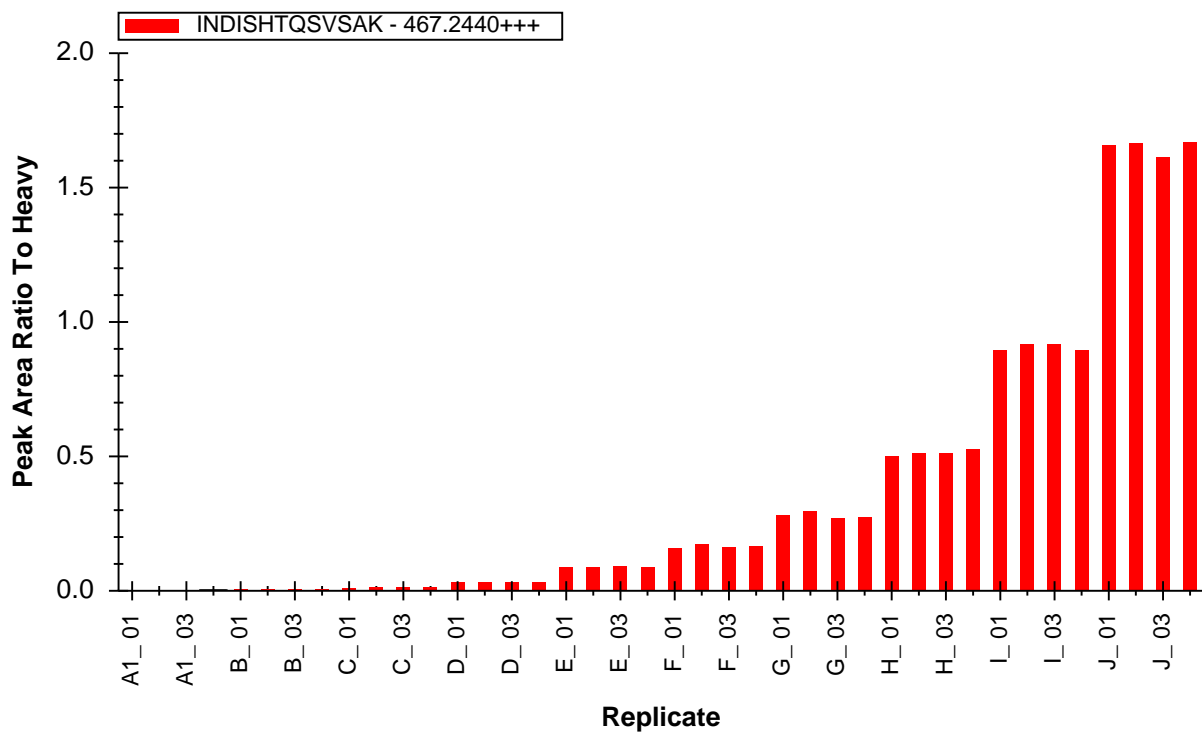


If you correct these by clicking and dragging beneath the x-axis, the CV for the heavy precursor of LSEPAELTDAVK drops to around 10% with most of the other peptides.

To review light:heavy ratios in this data set, perform the following steps:

- On the **View** menu, choose **Peak Areas** and click **Replicate Comparison (F7)**.
- Right-click on the **Peak Areas** graph, choose **Normalize To** and click **Heavy**.

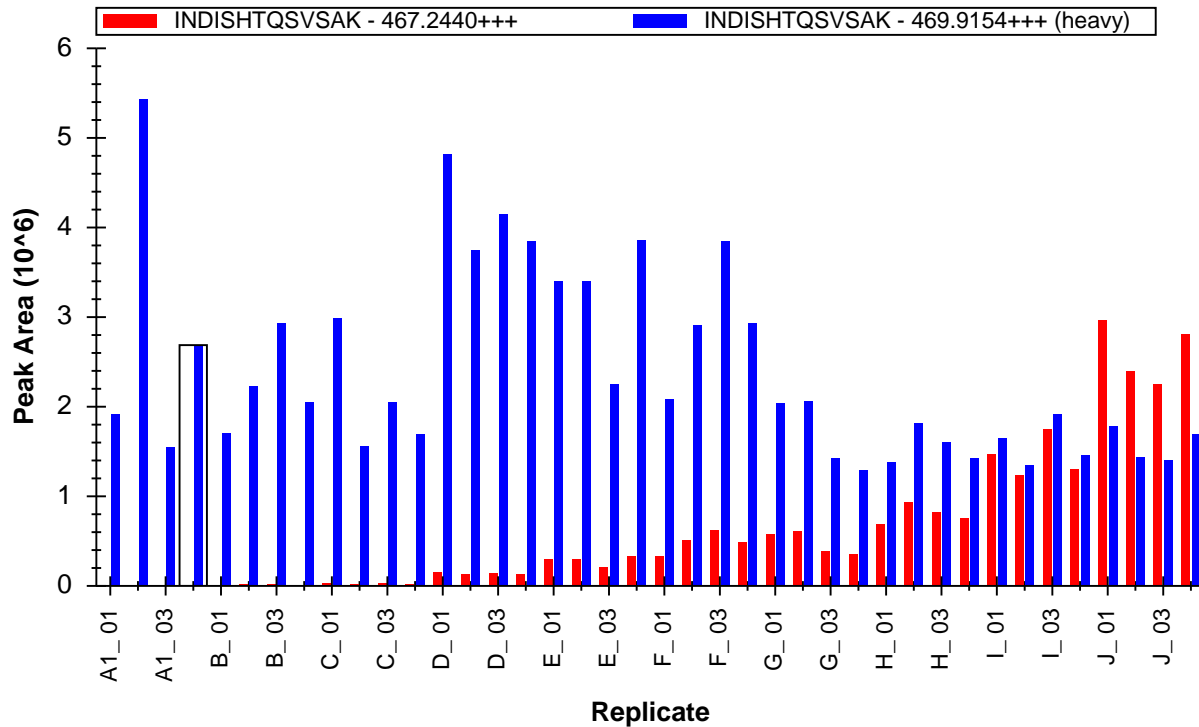
You will find that the charts for all peptides, even LSEPAELTDAVK look quite nice in this data set:



This seems to indicate that the internal standard is doing its job of compensating for variance in measurements of this peptide. To review the un-normalized data:

- Right-click on the **Peptide Areas** chart, choose **Normalize To** and click **None**.

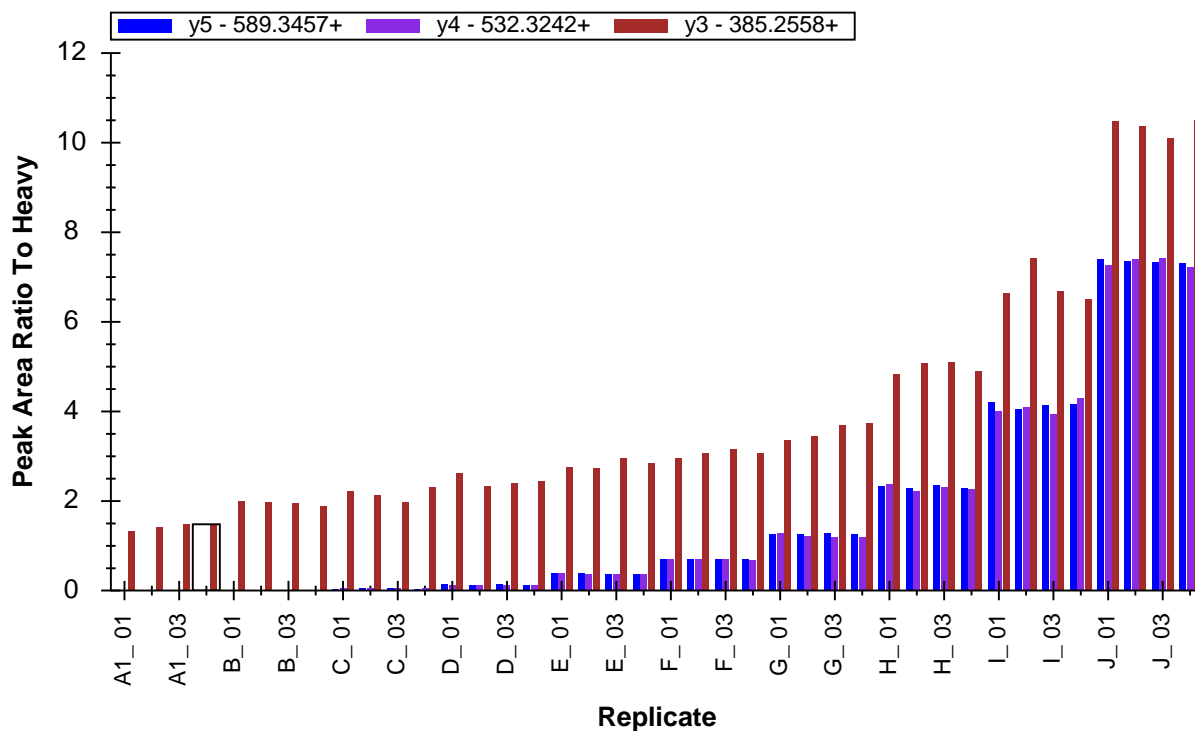
It would be hard to guess from this chart that the normalization would be so effective:



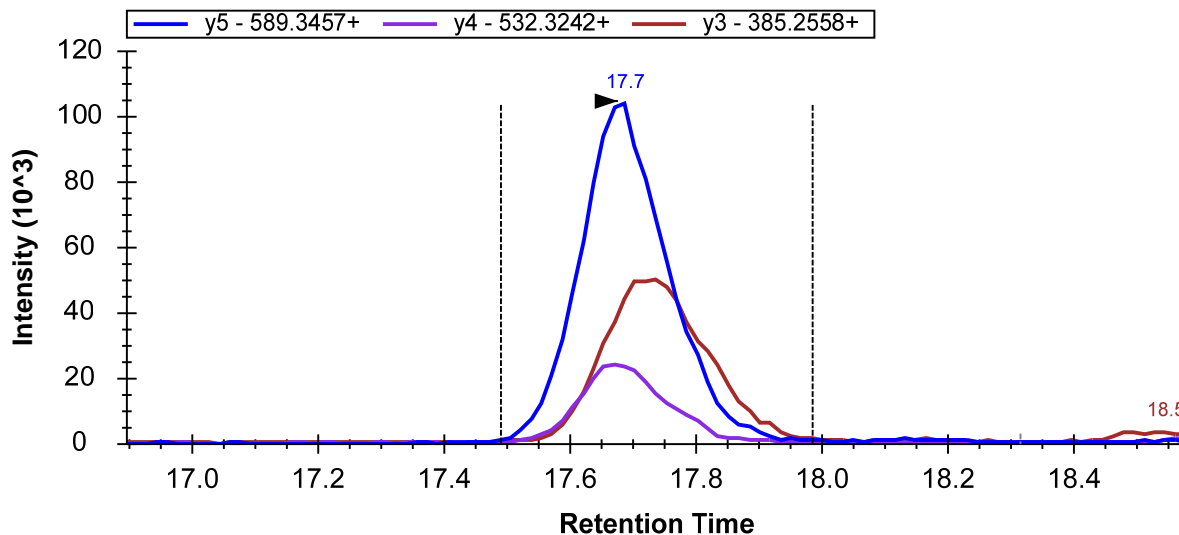
Finally, returning to the peptide in which we detected interference in the first data set:

- Select the light precursor 363.7059++ of the peptide HGFLP**R**.
- Right-click on the **Peak Areas** chart, choose **Transitions** and click **All**.
- Right-click on the **Peak Areas** chart, choose **Normalize To** and click **Heavy**.

Here also, you will see clear evidence of interference on the y3 transition:



Unlike the first data set, however, it is much harder to see the interference by inspecting the individual chromatograms. In this case, due to slightly different chromatography conditions, it is rarely possible to see evidence of two peaks in the integrated range for y3, as in replicate E_03 shown below:



The NCI CPTAC Study 7 provided quite a lot more data, all of which is now public. Skyline can help you learn a lot about this data quickly, even though the study was performed without its participants even knowing that Skyline would ever exist.

Conclusion

In this tutorial, you have learned how easy Skyline makes it to approach data from experiments designed and executed without any consideration for Skyline, whether those be your own experiments, before you started using Skyline, or experiments of others you wish to review or possibly repeat. For both the published data sets of MRMer and NCI CPTAC Study 7, you quickly created a Skyline document from transition lists, even when they contained relatively complicated modification schemes, including isotope labeled internal standards.

You have also learned a bit about the features Skyline provides for working quantitative targeted proteomics experiments involving isotope labeled peptide precursors. From the ease with which isotope labeling modifications can be defined to the ease with which they can be assigned, Skyline simplifies the work of creating instrument methods for these experiments. From accurate light:heavy peak area ratios to powerful chart display options, Skyline gives you rich insight into data collected for these experiments.

Reference List

1. Martin,D.B. *et al.* MRMer, an interactive open source and cross-platform system for data extraction and visualization of multiple reaction monitoring experiments. *Mol. Cell Proteomics*. **7**, 2270-2278 (2008).
2. Addona,T.A. *et al.* Multi-site assessment of the precision and reproducibility of multiple reaction monitoring-based measurements of proteins in plasma. *Nat. Biotechnol.* **27**, 633-641 (2009).