



---

**Qi Tang**

@proteinT.com

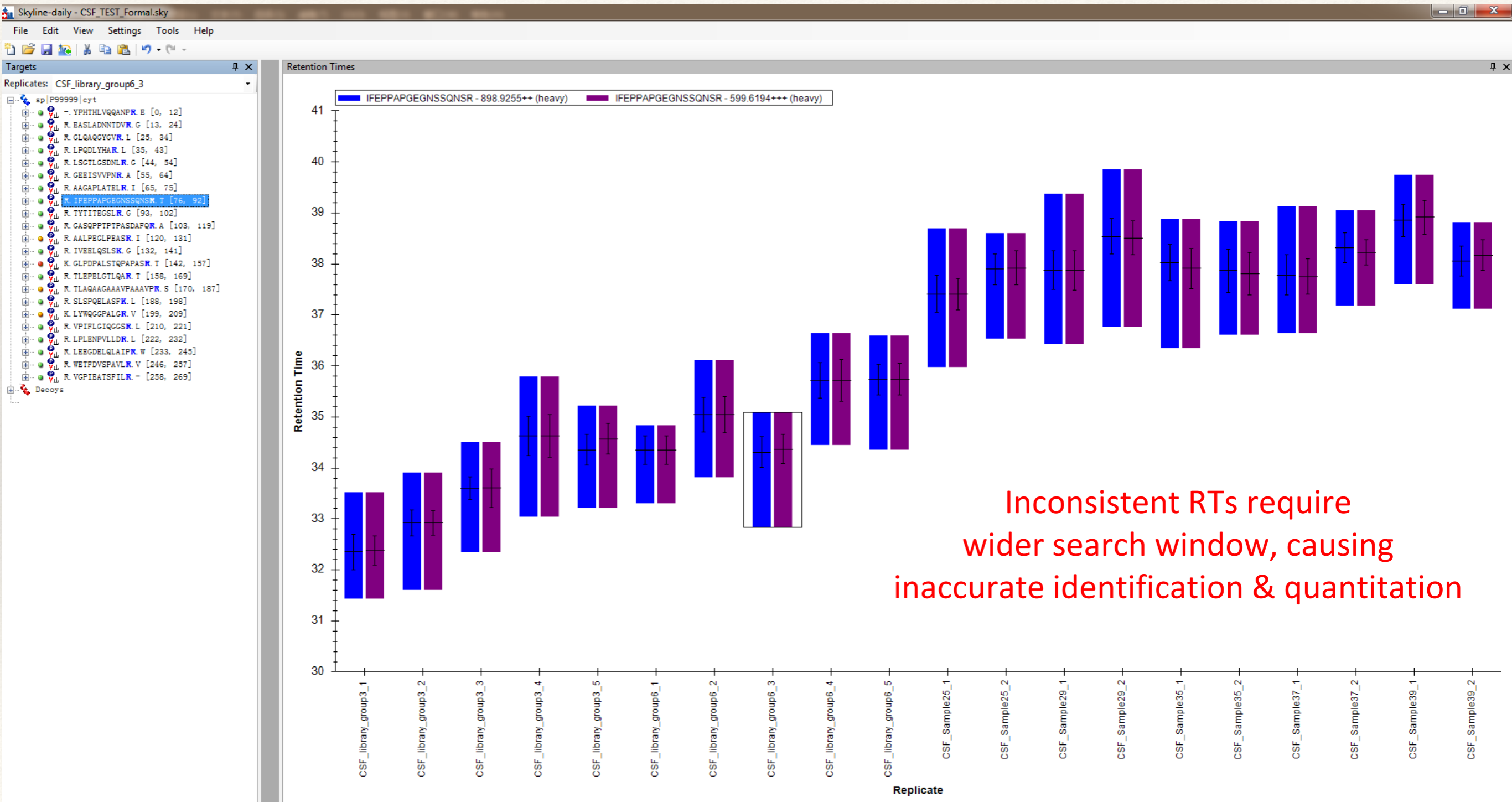
2016.06.05

Skyline User Meeting

Edited Transition and RT Information in Skyline  
Library Improves DIA Quantification of Cerebral  
Spinal Fluid (CSF) Proteomes

---

# Potential Problems

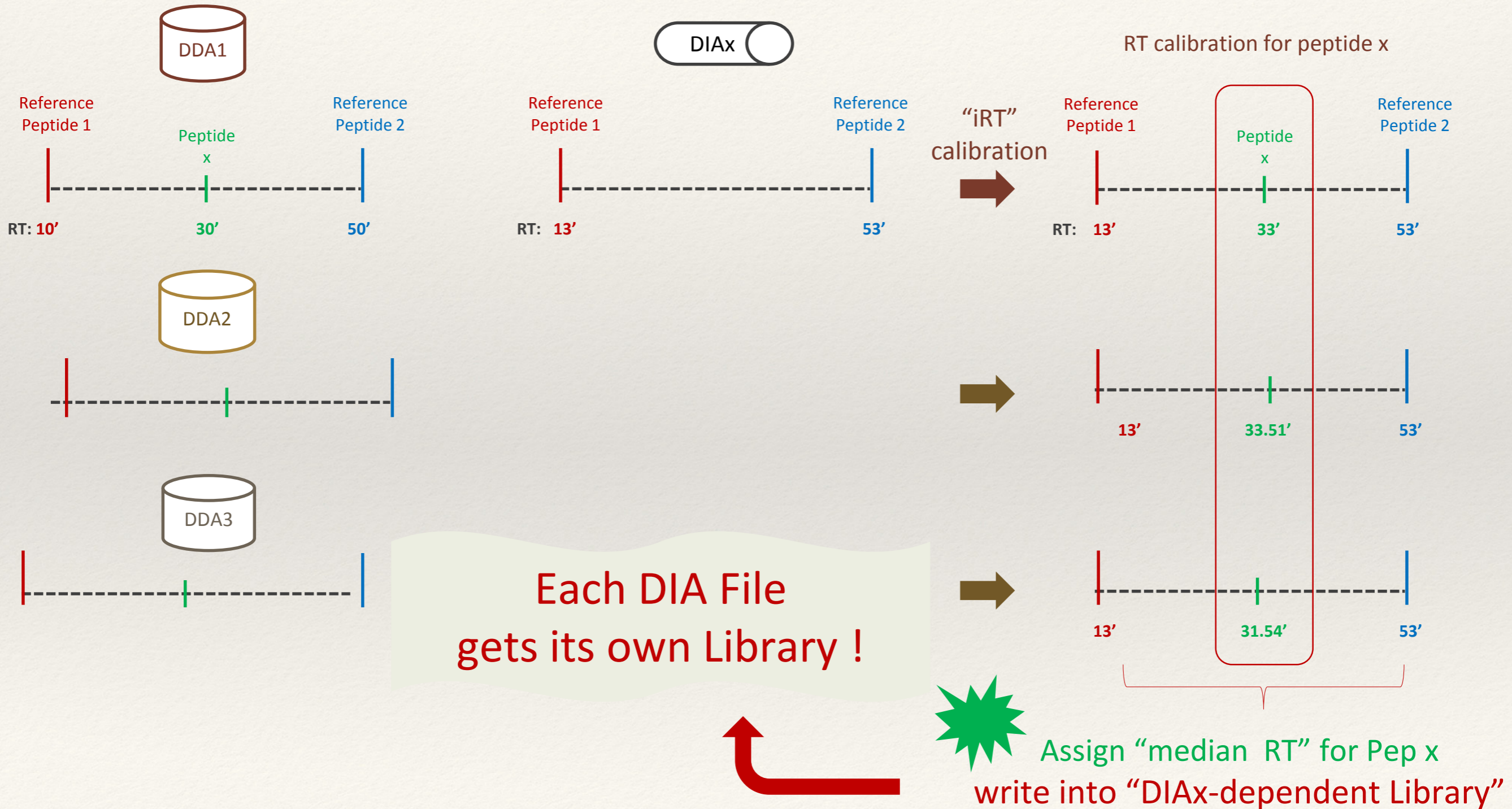


Inconsistent RTs require wider search window, causing inaccurate identification & quantitation



# Our Solution

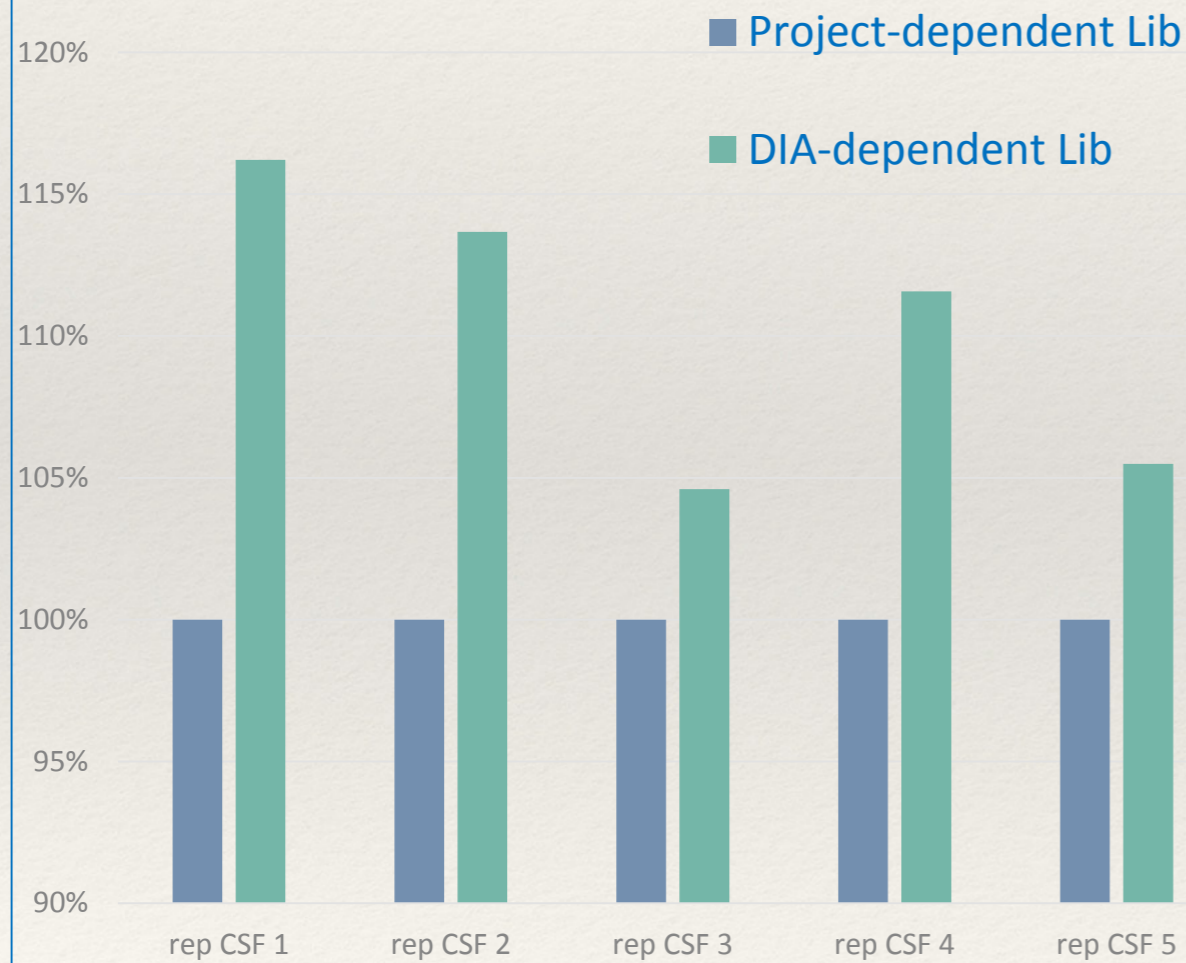
Build a “DIA-dependent library” for each DIA file



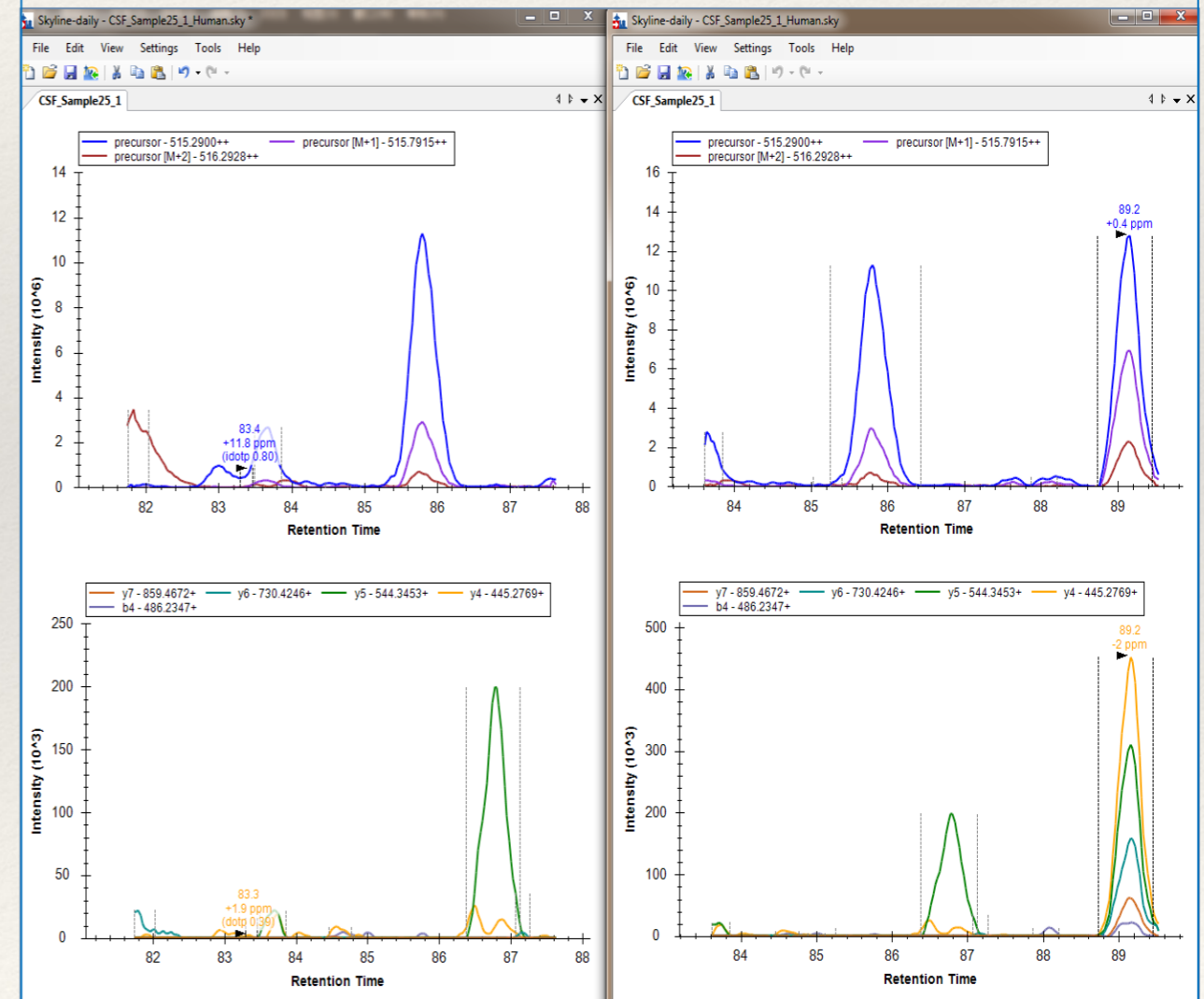


# Data Improvement

Increased Quantitative Peptide Number  
by 10.3% in Average



Increased Quantitative Accuracy  
(e.g. Pep GLEWVANIK)





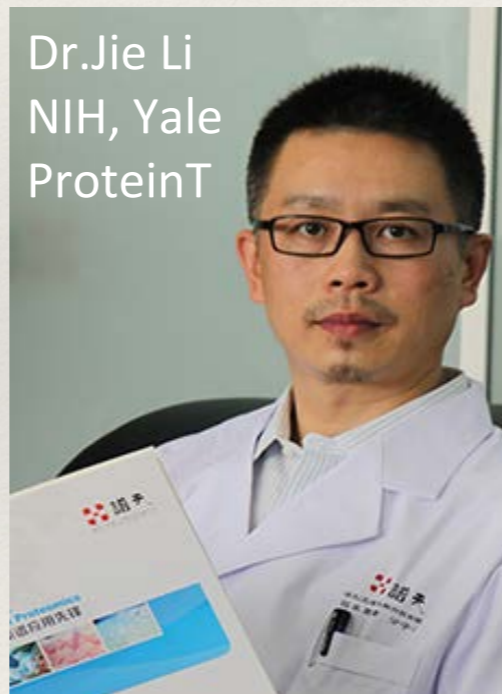
# Aknowledgement



*After-meeting contact  
Qi.Tang@proteinT.com*



A Clinical Proteomic Company



Dr. Jie Li  
NIH, Yale  
ProteinT

