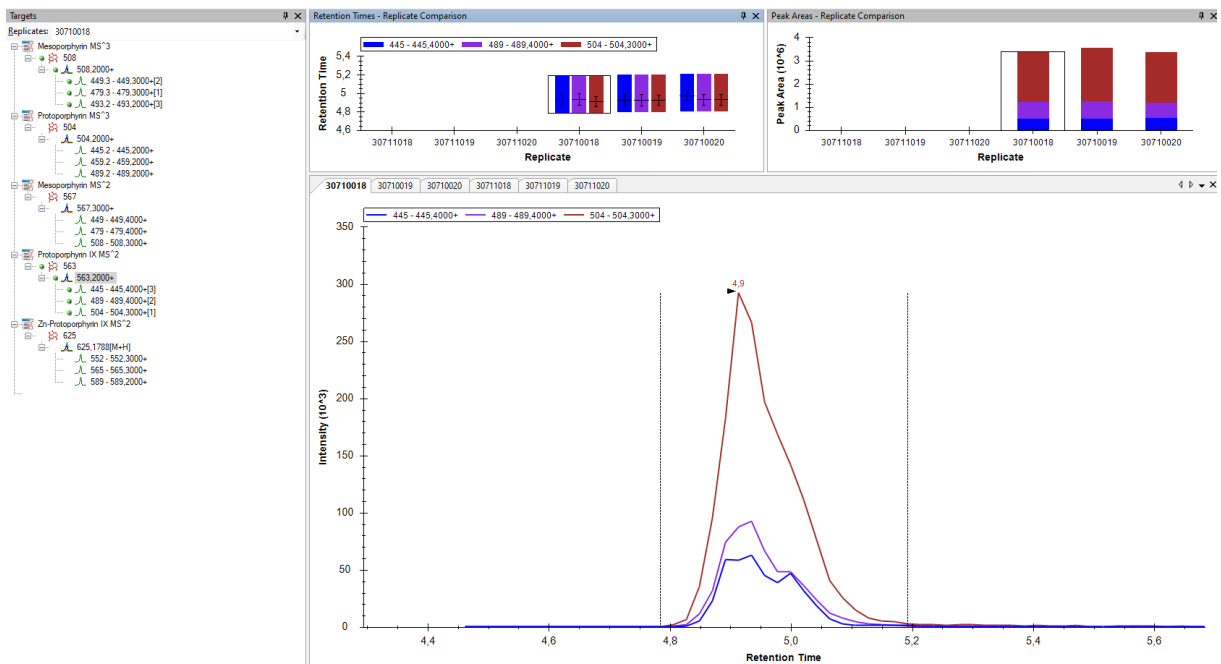
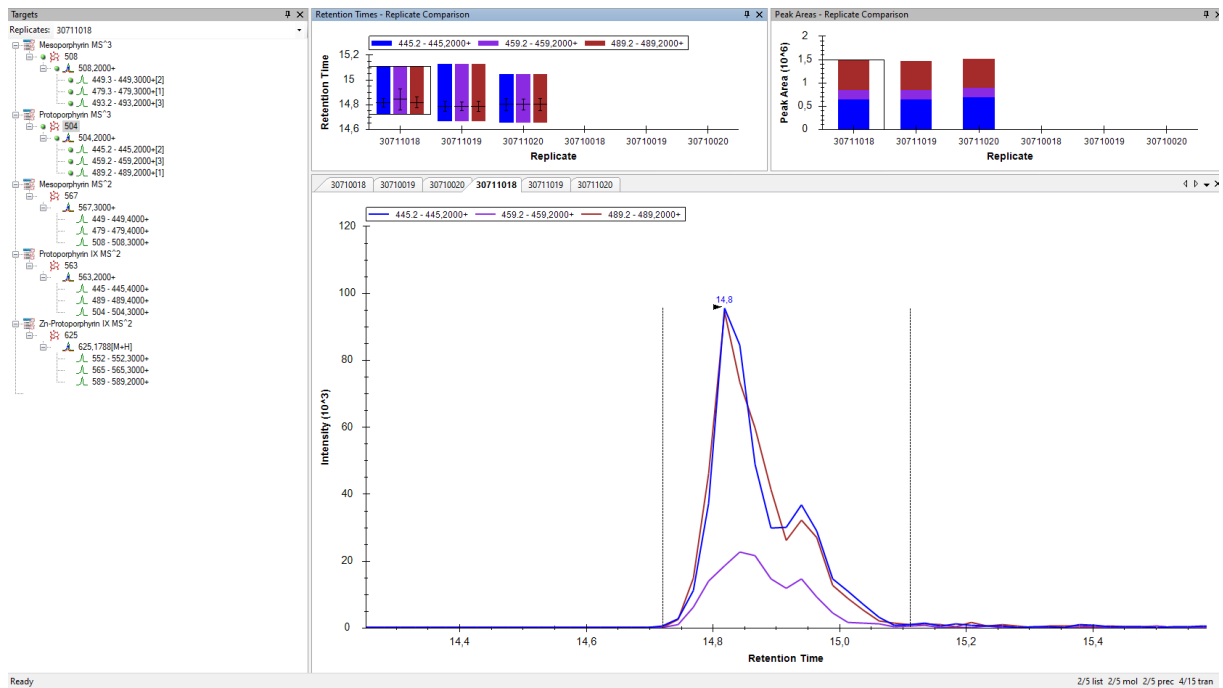


As you can see there are 6 different measurements from our first molecule of interest, that are all correctly analysed as MS<sup>3</sup>



Using our established HPLC-MS Method, our 2<sup>nd</sup> molecule of interest has been correctly analysed as a MS<sup>2</sup> measurement.



As you can see here, using our new HPLC-MS method skyline detects our 2<sup>nd</sup> molecule of interest, but it falsely assumes we've measured it in MS<sup>3</sup>.