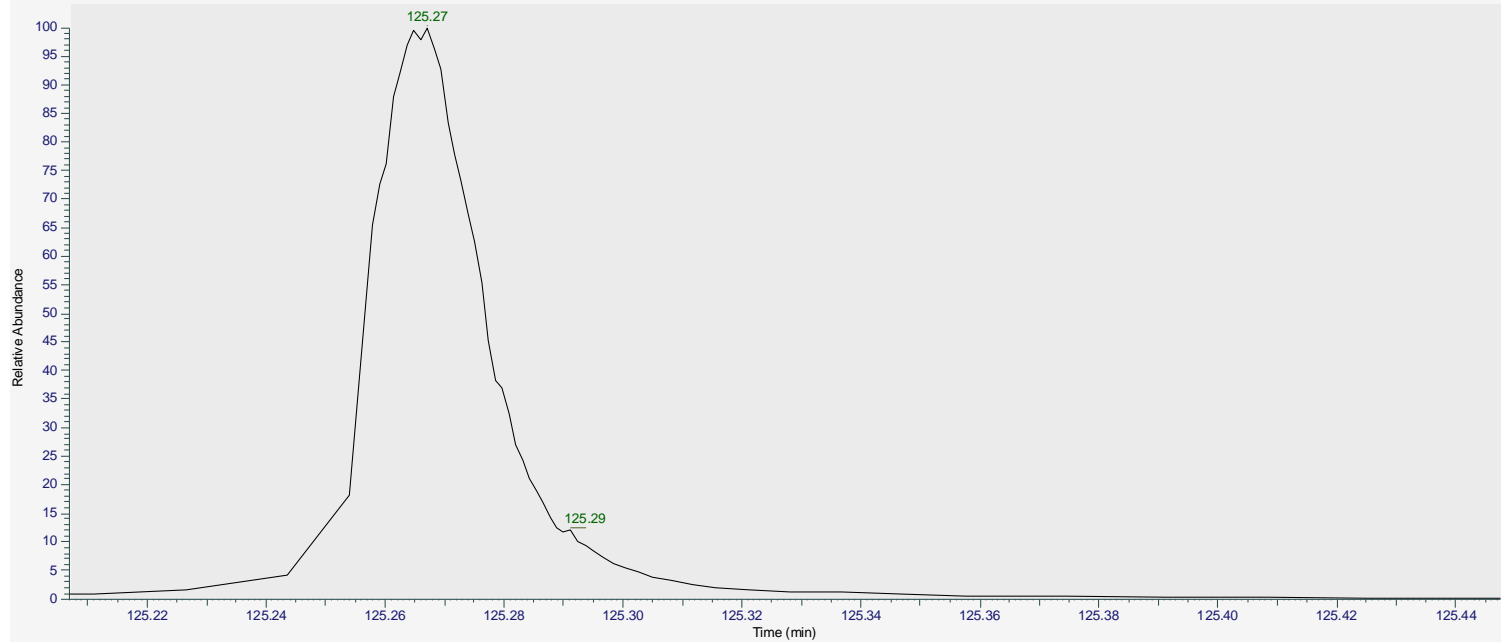
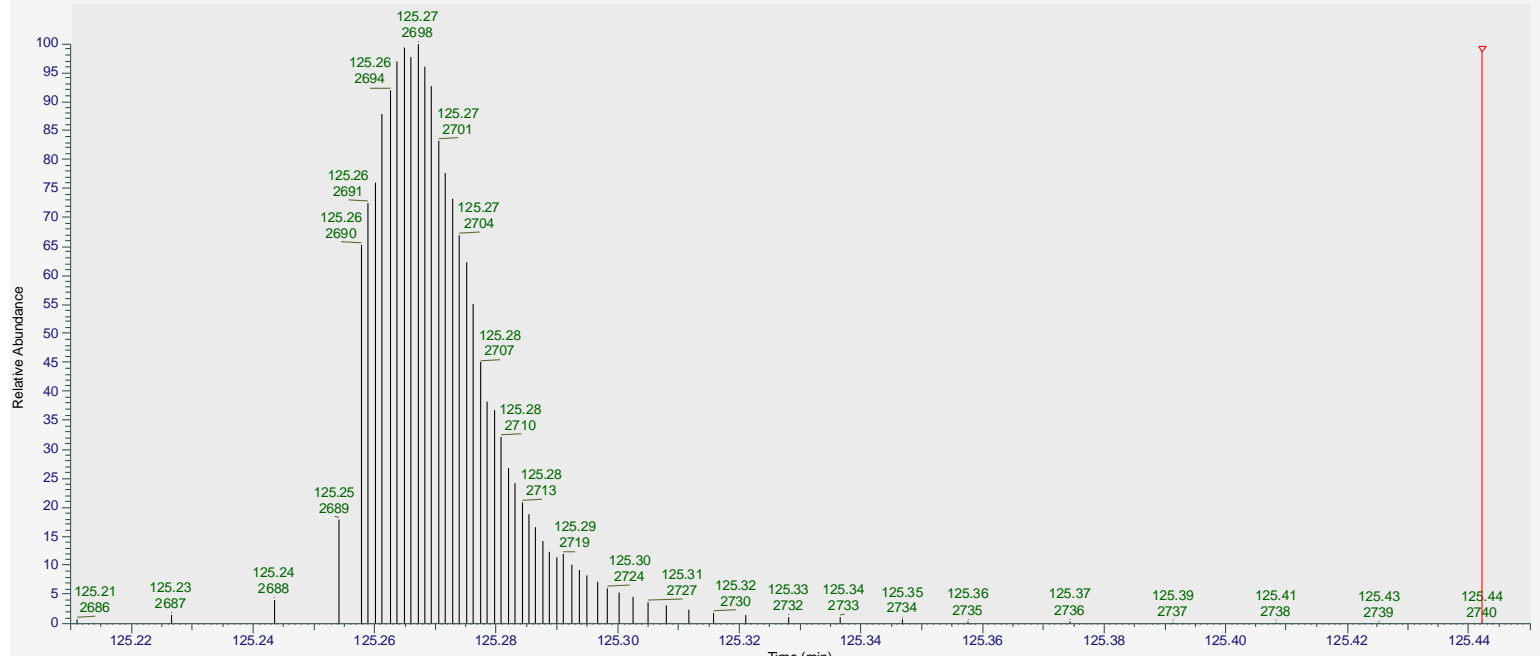


RT : 125.21-125.45

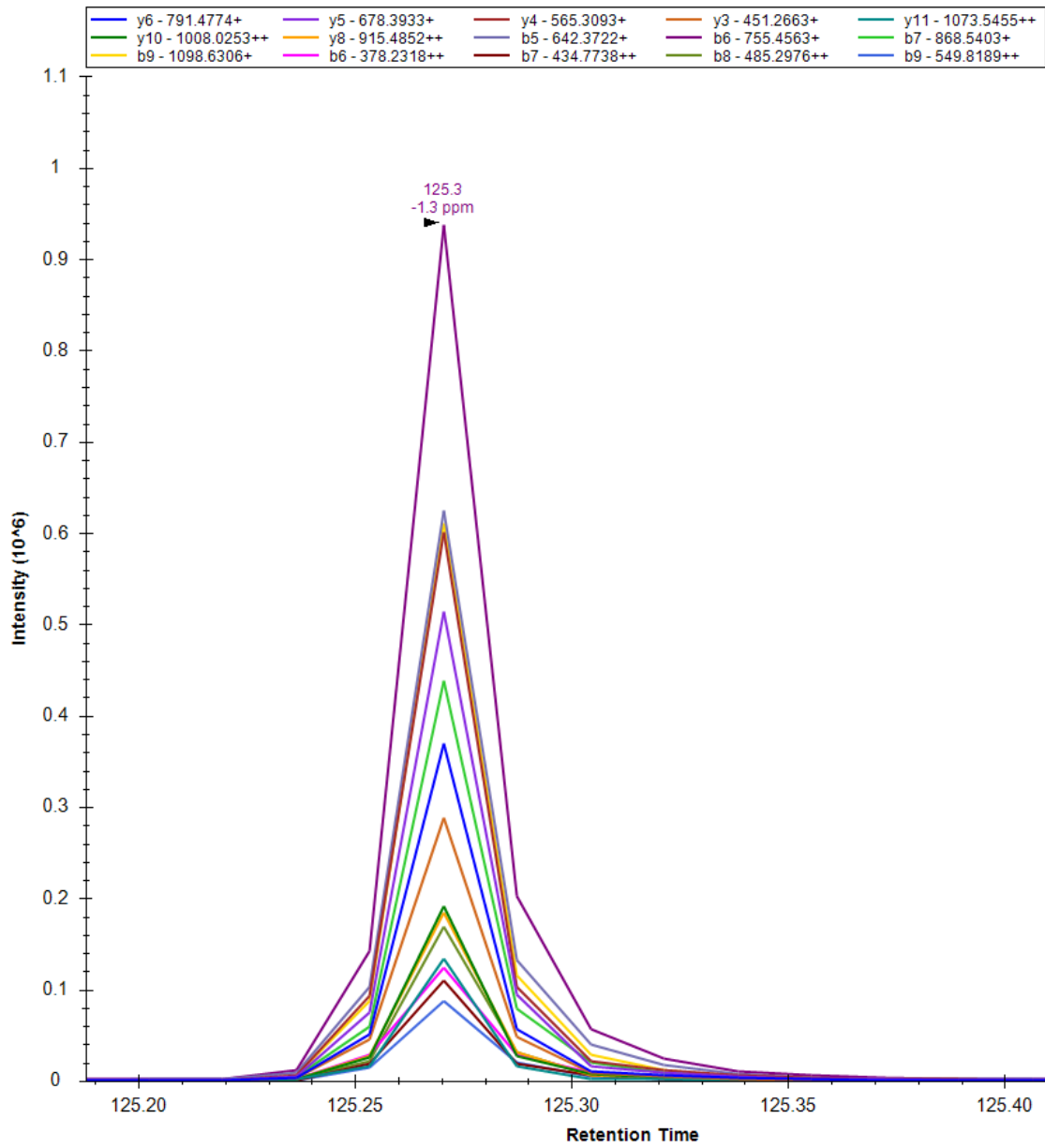


NL: 2.42E7
TIC MS
20210720_04_BTK
_BTKkd+
Probe_sclick_PRM

RT : 125.21-125.45



NL: 2.42E7
TIC MS
20210720_04_BTK
_BTKkd+
Probe_sclick_PRM



Transition Settings ✕

Prediction Filter Library Instrument Full-Scan Ion Mobility

MS1 filtering

Isotope peaks included: Precursor mass analyzer:
None ▼ ▼

Peaks: Resolution:
 m/z

Isotope labeling enrichment:
 ▼

MS/MS filtering

Acquisition method: Product mass analyzer:
Targeted ▼ Orbitrap ▼

Isolation scheme: Resolving power: At:
 ▼ 30,000 200 *m/z*

Use high-selectivity extraction

Retention time filtering

Use only scans within 5 minutes of MS/MS IDs

Use only scans within 5 minutes of predicted RT

Include all matching scans

OK Cancel