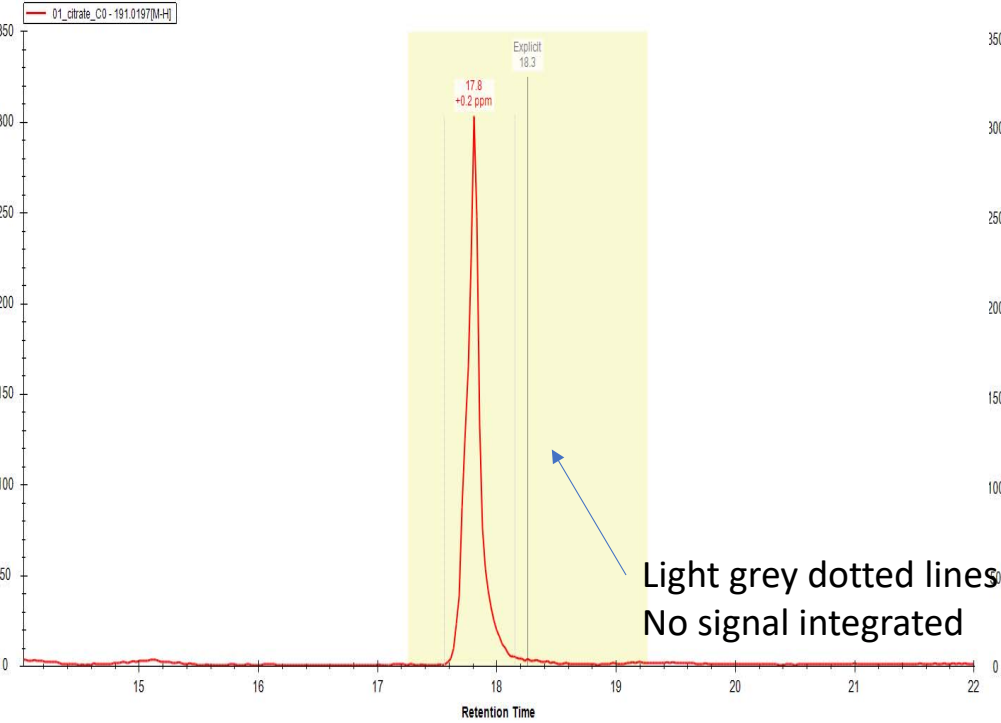
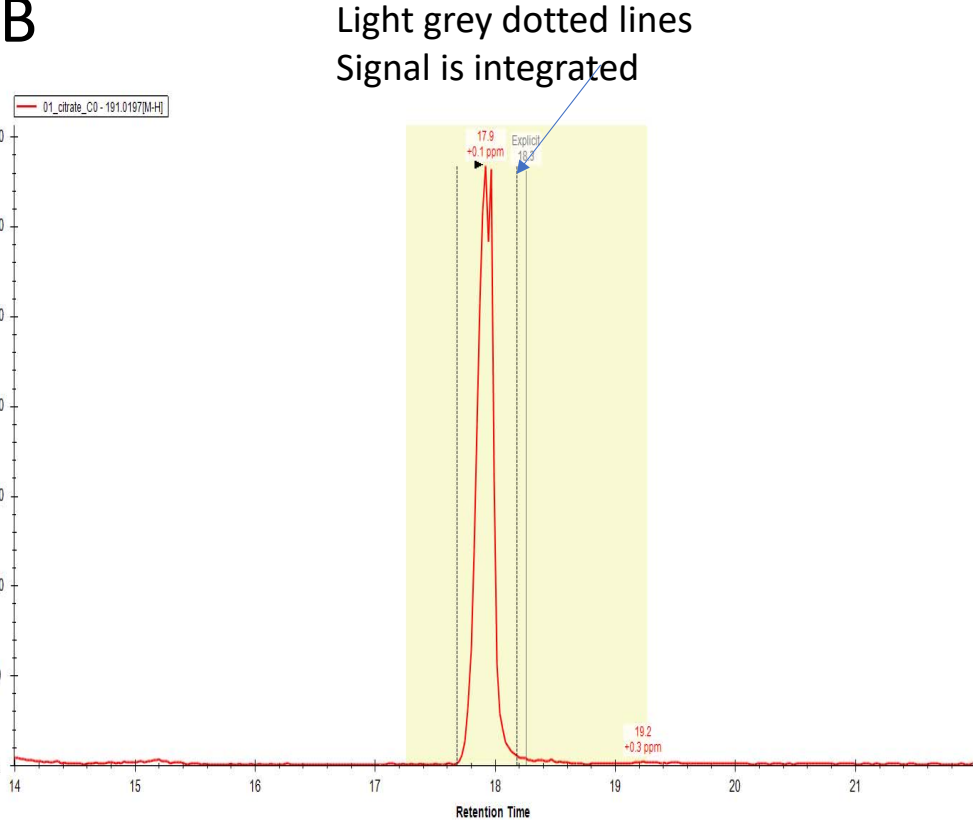


Small molecule MS1 signal extraction. Two pool samples (A & B) injected. The Explicit RT is set to 18.3min. RT window is 2min. Clearly Skyline finds the peak though it is 0.3min from expected RT but why is no signal reported for A while it is reported for B. I can easy add signal manually – but my question is why it was not picked automatically.

A



B



Both dotted-line sets seems to have picked the correct peak