

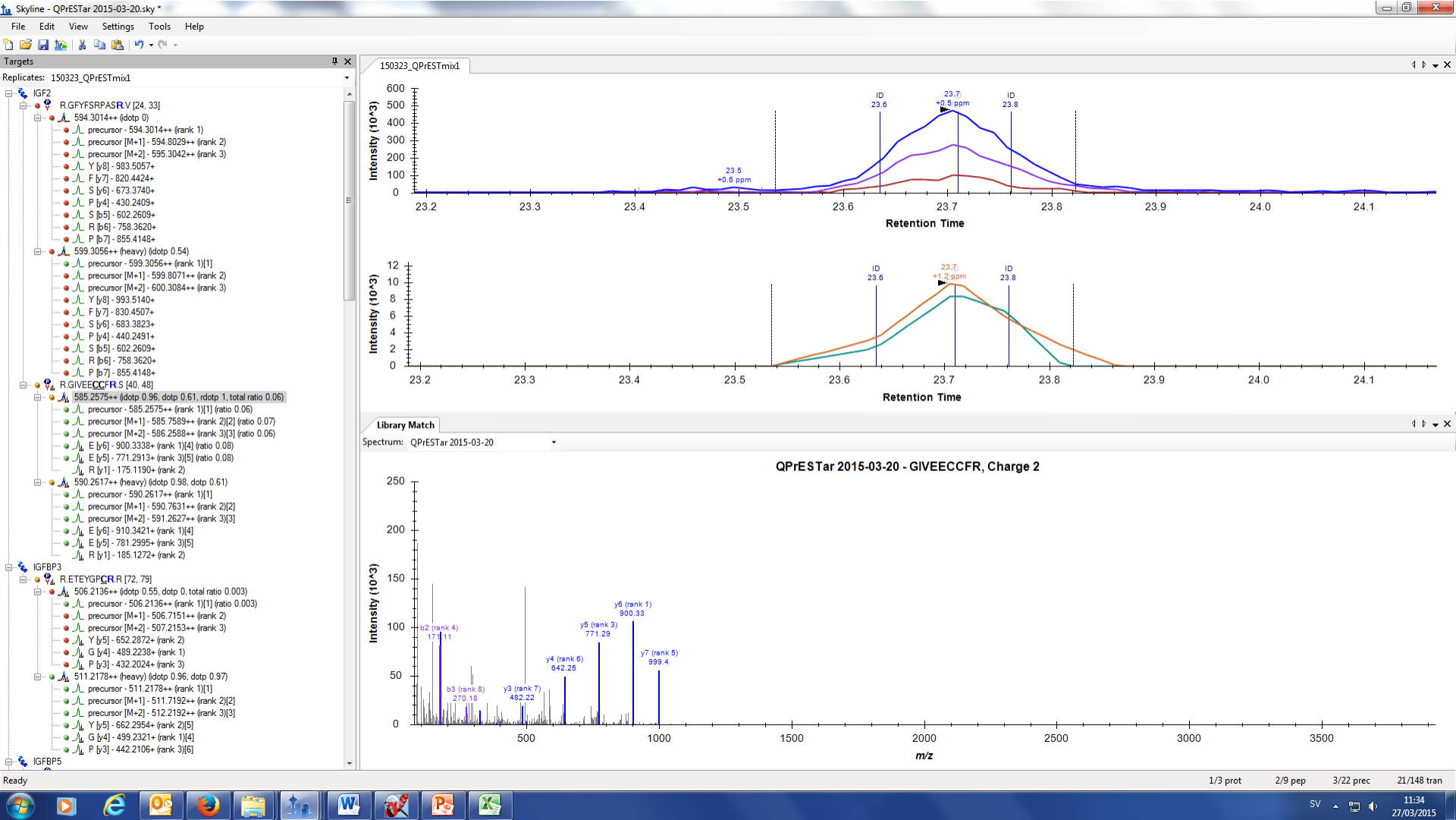
Intensity

150323_QPrESTmix1.ms1*

Proteins Peptides Search Input Result Filters Peptide Confidence Search Summary

Accession	Description	Score	Coverage	# Proteins	# UniquePeptides	# Peptides	# PSMs	# AAs	MW [kDa]	calc. pI					
M3WQ08	Uncharacterized protein OS=Felis catus GN=IGFBP5 PE=4...	75.09	20.66 %	1	5	5	65	271	30.3	8.18					
A2	Sequence	# PSMs	# Proteins	# Protein Groups	Protein Group Accessions	Modifications	ΔCn	q-Value	PEP	XCorr	Charge	MH+ [Da]	ΔM [ppm]	RT [min]	# Missed Cleavages
1	EHEEPTTSEMAEETYSK	6	1	1	M3WQ08	K18(Label:13C(6)15N(2))	0.0000	0	0.00195	6.47	3	2102.89597	0.41	21.37	0
2	HMEASLQELK	6	1	1	M3WQ08	K10(Label:13C(6)15N(2))	0.0000	0	0.048	2.86	3	1193.60776	0.23	21.90	0
3	QESEGGPcr	28	1	1	M3WQ08	C8(Carbamidomethyl); R9(Label:13C(6)15N(4))	0.0000	0	0.0716	2.21	2	1100.46684	0.30	10.07	0
4	FVGGAEHTAHP	18	1	1	M3WQ08	R12(Label:13C(6)15N(4))	0.0000	0	0.033	1.54	3	1265.62561	-0.42	15.35	0
5	GVGLNEK	4	1	1	M3WQ08	C3(Carbamidomethyl); K7(Label:13C(6)15N(2))	0.0000	0	0.38	1.48	2	827.41710	-0.06	15.74	0
6	GVGLNEK	2	1	1	M3WQ08	C3(Carbamidomethyl)	0.0000	0	0.392	0.75	2	819.40386	1.10	15.62	0
7	FVGGAEHTAHP	1	1	1	M3WQ08	N7(Deamidated); R12(Label:13C(6)15N(4))	0.0000	0.881	1	0.10	2	1266.61003	-0.10	15.82	0
M3XE51	Uncharacterized protein OS=Felis catus GN=IGF2 PE=4S...	8.22	13.24 %	1	1	1	13	68	7.6	6.44					
A2	Sequence	# PSMs	# Proteins	# Protein Groups	Protein Group Accessions	Modifications	ΔCn	q-Value	PEP	XCorr	Charge	MH+ [Da]	ΔM [ppm]	RT [min]	# Missed Cleavages
1	GIVEccFR	9	1	1	M3XE51	C6(Carbamidomethyl); C7(Carbamidomethyl); R9(Label:13C(6)15N(4))	0.0000	0	0.000145	2.33	2	1179.51641	0.24	23.72	0
2	GIVEccFR	4	1	1	M3XE51	C6(Carbamidomethyl); C7(Carbamidomethyl)	0.0000	0	0.103	1.41	2	1169.50847	0.53	23.71	0
M3XK7	Uncharacterized protein (Fragment) OS=Felis catus GN=I...	3.74	5.10 %	1	1	1	5	157	18.0	8.92					
M3W4K2	Uncharacterized protein OS=Felis catus GN=DOPEY1 PE=...	0.00	0.28 %	1	1	1	8	2465	276.8	6.27					
M3WQ90	Uncharacterized protein OS=Felis catus GN=TMTC3 PE=4...	0.00	1.16 %	1	1	1	1	601	68.3	8.51					

Light



Heavy

