

Document Grid modified MSStats Input report

| Document Grid: MSStats Input + PAP | | | | | | | | | | | | | | |
|--|--------------|---------------------------|------------------|--------------|----------------|--------------------|---------------|--------------|------------------|-----------|---------------|-----------|-------------------|--------------------|
| Views 1 of 955679 Export... Find: | | | | | | | | | | | | | | |
| | Protein Name | Peptide Modified Sequence | Precursor Charge | Fragment Ion | Product Charge | Isotope Label Type | Condition | BioReplicate | File Name | Area | Standard Type | Truncated | Detection Q Value | Points Across Peak |
| ▶ | 1/Biogno | LGGNEQVTR | 2 | y8 | 1 | light | VarWin | 1 | HEK_DIA_A1.mz... | 116129928 | iRT | False | #N/A | 21 |
| | 1/Biogno | LGGNEQVTR | 2 | y8 | 1 | light | VarWin | 2 | HEK_DIA_A2.mz... | 124407640 | iRT | False | #N/A | 21 |
| | 1/Biogno | LGGNEQVTR | 2 | y8 | 1 | light | VarWin | 3 | HEK_DIA_A3.mz... | 124449768 | iRT | False | #N/A | 20 |
| | 1/Biogno | LGGNEQVTR | 2 | y8 | 1 | light | VarWin_60m... | 1 | HEK_DIA_B1.mz... | 113586376 | iRT | False | #N/A | 18 |
| | 1/Biogno | LGGNEQVTR | 2 | y8 | 1 | light | VarWin_60m... | 2 | HEK_DIA_B2.mz... | 116560512 | iRT | False | #N/A | 21 |
| | 1/Biogno | LGGNEQVTR | 2 | y8 | 1 | light | VarWin_60m... | 3 | HEK_DIA_B3.mz... | 112002728 | iRT | False | #N/A | 17 |
| | 1/Biogno | LGGNEQVTR | 2 | y8 | 1 | light | VarWin_long | 1 | HEK_DIA_C1.mz... | 105363000 | iRT | False | #N/A | 19 |
| | 1/Biogno | LGGNEQVTR | 2 | y8 | 1 | light | VarWin_long | 2 | HEK_DIA_C2.mz... | 139775392 | iRT | False | #N/A | 18 |
| | 1/Biogno | LGGNEQVTR | 2 | y8 | 1 | light | VarWin_long | 3 | HEK_DIA_C3.mz... | 111202472 | iRT | False | #N/A | 14 |
| | 1/Biogno | LGGNEQVTR | 2 | y7 | 1 | light | VarWin | 1 | HEK_DIA_A1.mz... | 41179792 | iRT | False | #N/A | 21 |
| | 1/Biogno | LGGNEQVTR | 2 | y7 | 1 | light | VarWin | 2 | HEK_DIA_A2.mz... | 43922312 | iRT | False | #N/A | 21 |
| | 1/Biogno | LGGNEQVTR | 2 | y7 | 1 | light | VarWin | 3 | HEK_DIA_A3.mz... | 44245924 | iRT | False | #N/A | 20 |
| | 1/Biogno | LGGNEQVTR | 2 | y7 | 1 | light | VarWin_60m... | 1 | HEK_DIA_B1.mz... | 41616392 | iRT | False | #N/A | 18 |
| | 1/Biogno | LGGNEQVTR | 2 | y7 | 1 | light | VarWin_60m... | 2 | HEK_DIA_B2.mz... | 41237976 | iRT | False | #N/A | 21 |
| | 1/Biogno | LGGNEQVTR | 2 | y7 | 1 | light | VarWin_60m... | 3 | HEK_DIA_B3.mz... | 40965204 | iRT | False | #N/A | 17 |
| | 1/Biogno | LGGNEQVTR | 2 | y7 | 1 | light | VarWin_long | 1 | HEK_DIA_C1.mz... | 37138216 | iRT | False | #N/A | 19 |
| | 1/Biogno | LGGNEQVTR | 2 | y7 | 1 | light | VarWin_long | 2 | HEK_DIA_C2.mz... | 49110456 | iRT | False | #N/A | 18 |
| | 1/Biogno | LGGNEQVTR | 2 | y7 | 1 | light | VarWin_long | 3 | HEK_DIA_C3.mz... | 38929176 | iRT | False | #N/A | 14 |
| | 1/Biogno | LGGNEQVTR | 2 | y6 | 1 | light | VarWin | 1 | HEK_DIA_A1.mz... | 12370361 | iRT | False | #N/A | 21 |
| | 1/Biogno | LGGNEQVTR | 2 | y6 | 1 | light | VarWin | 2 | HEK_DIA_A2.mz... | 13518769 | iRT | False | #N/A | 21 |
| | 1/Biogno | LGGNEQVTR | 2 | y6 | 1 | light | VarWin | 3 | HEK_DIA_A3.mz... | 13187260 | iRT | False | #N/A | 20 |
| | 1/Biogno | LGGNEQVTR | 2 | y6 | 1 | light | VarWin_60m... | 1 | HEK_DIA_B1.mz... | 12318416 | iRT | False | #N/A | 18 |
| | 1/Biogno | LGGNEQVTR | 2 | y6 | 1 | light | VarWin_60m... | 2 | HEK_DIA_B2.mz... | 13022169 | iRT | False | #N/A | 21 |
| | 1/Biogno | LGGNEQVTR | 2 | y6 | 1 | light | VarWin_60m... | 3 | HEK_DIA_B3.mz... | 13106819 | iRT | False | #N/A | 17 |
| | 1/Biogno | LGGNEQVTR | 2 | y6 | 1 | light | VarWin_long | 1 | HEK_DIA_C1.mz... | 11568315 | iRT | False | #N/A | 19 |
| | 1/Biogno | LGGNEQVTR | 2 | y6 | 1 | light | VarWin_long | 2 | HEK_DIA_C2.mz... | 15439365 | iRT | False | #N/A | 18 |
| | 1/Biogno | LGGNEQVTR | 2 | y6 | 1 | light | VarWin_long | 3 | HEK_DIA_C3.mz... | 11938360 | iRT | False | #N/A | 14 |
| | 1/Biogno | LGGNEQVTR | 2 | y5 | 1 | light | VarWin | 1 | HEK_DIA_A1.mz... | 26291402 | iRT | False | #N/A | 21 |
| | 1/Biogno | LGGNEQVTR | 2 | y5 | 1 | light | VarWin | 2 | HEK_DIA_A2.mz... | 28018950 | iRT | False | #N/A | 21 |
| | 1/Biogno | LGGNEQVTR | 2 | y5 | 1 | light | VarWin | 3 | HEK_DIA_A3.mz... | 28653038 | iRT | False | #N/A | 20 |

New Pivot Focusing on Proteins with Max Detection Q value

Document Grid: MSstats Input + PAP

Views | of 831652 | Export... | Find: A

| | Protein Name | Condition | BioReplicate | Area | Points Across Peak | Max Detection Q Value |
|---|-----------------|---------------|--------------|-----------|--------------------|-----------------------|
| ▶ | 1/Biognosys_IRT | VarWin | 1 | 116129928 | 21 | #N/A |
| | 1/Biognosys_IRT | VarWin | 2 | 124407640 | 21 | #N/A |
| | 1/Biognosys_IRT | VarWin | 3 | 124449768 | 20 | #N/A |
| | 1/Biognosys_IRT | VarWin_60msIT | 1 | 113586376 | 18 | #N/A |
| | 1/Biognosys_IRT | VarWin_60msIT | 2 | 116560512 | 21 | #N/A |
| | 1/Biognosys_IRT | VarWin_60msIT | 3 | 112002728 | 17 | #N/A |
| | 1/Biognosys_IRT | VarWin_long | | | | |
| | 1/Biognosys_IRT | VarWin_long | | | | |
| | 1/Biognosys_IRT | VarWin | | | | |
| | 1/Biognosys_IRT | VarWin | | | | |
| | 1/Biognosys_IRT | VarWin | | | | |
| | 1/Biognosys_IRT | VarWin | | | | |
| | 1/Biognosys_IRT | VarWin_60msIT | | | | |
| | 1/Biognosys_IRT | VarWin_60msIT | | | | |
| | 1/Biognosys_IRT | VarWin_60msIT | | | | |
| | 1/Biognosys_IRT | VarWin_long | | | | |
| | 1/Biognosys_IRT | VarWin_long | | | | |
| | 1/Biognosys_IRT | VarWin | | | | |
| | 1/Biognosys_IRT | VarWin | | | | |
| | 1/Biognosys_IRT | VarWin | | | | |
| | 1/Biognosys_IRT | VarWin_60msIT | | | | |
| | 1/Biognosys_IRT | VarWin_60msIT | | | | |
| | 1/Biognosys_IRT | VarWin_60msIT | | | | |
| | 1/Biognosys_IRT | VarWin_long | | | | |
| | 1/Biognosys_IRT | VarWin_long | 2 | 15439365 | 18 | #N/A |
| | 1/Biognosys_IRT | VarWin_long | 3 | 11938360 | 14 | #N/A |
| | 1/Biognosys_IRT | VarWin | 1 | 26291402 | 21 | #N/A |
| | 1/Biognosys_IRT | VarWin | 2 | 28018950 | 21 | #N/A |
| | 1/Biognosys_IRT | VarWin | 3 | 28653038 | 20 | #N/A |
| | 1/Biognosys_IRT | VarWin_60msIT | 1 | 26561086 | 18 | #N/A |

Pivot Editor

Peptide Modified Sequence
Precursor Charge
Fragment Ion
Product Charge
Isotope Label Type
File Name
Standard Type
Truncated
Detection Q Value

Add Row Header >>

Add Column Header >>

Add Value >>

Sum

Row Headers
Protein Name
Condition
BioReplicate
Area

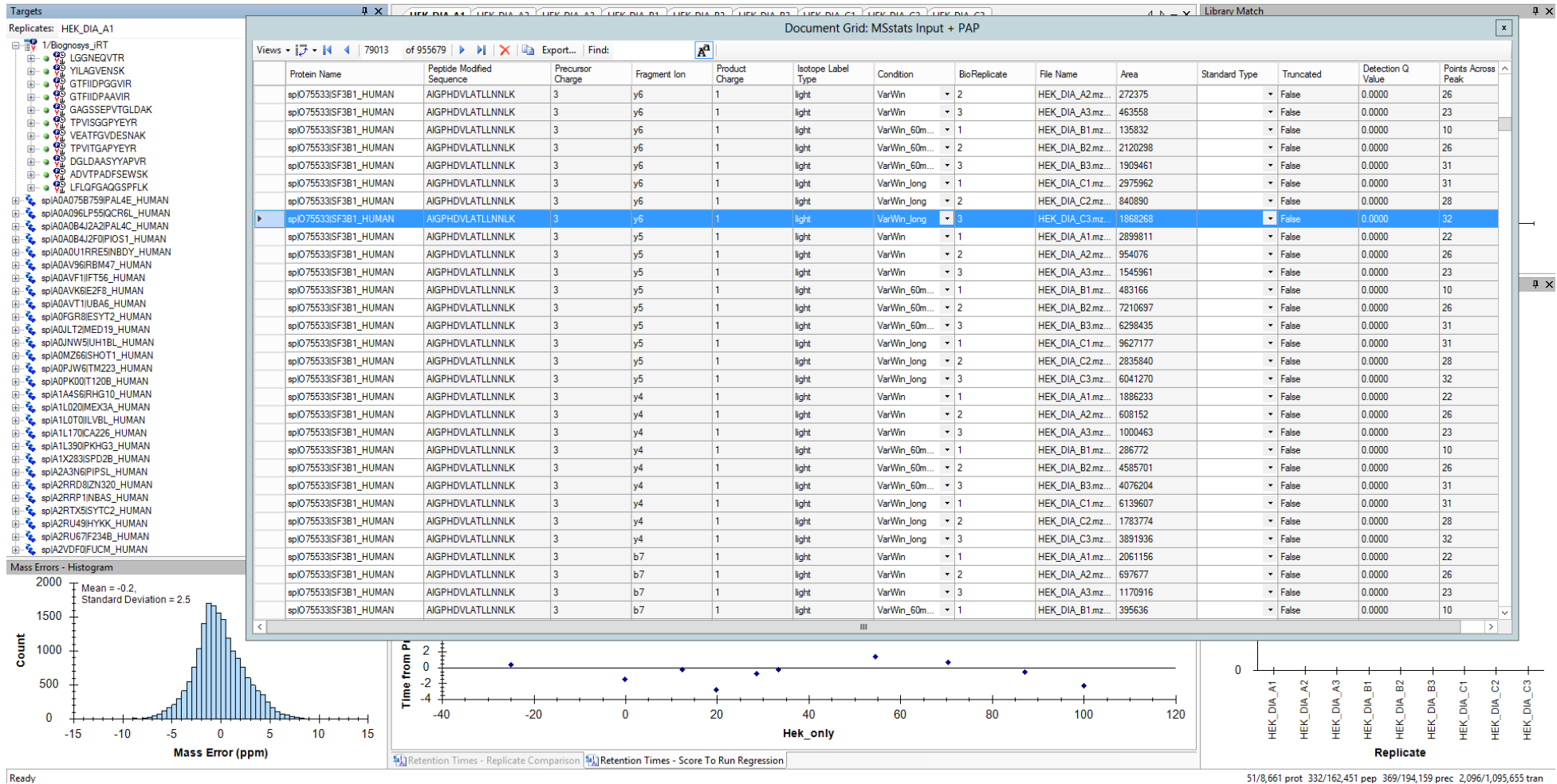
Column Headers

Values
Max Detection Q Value

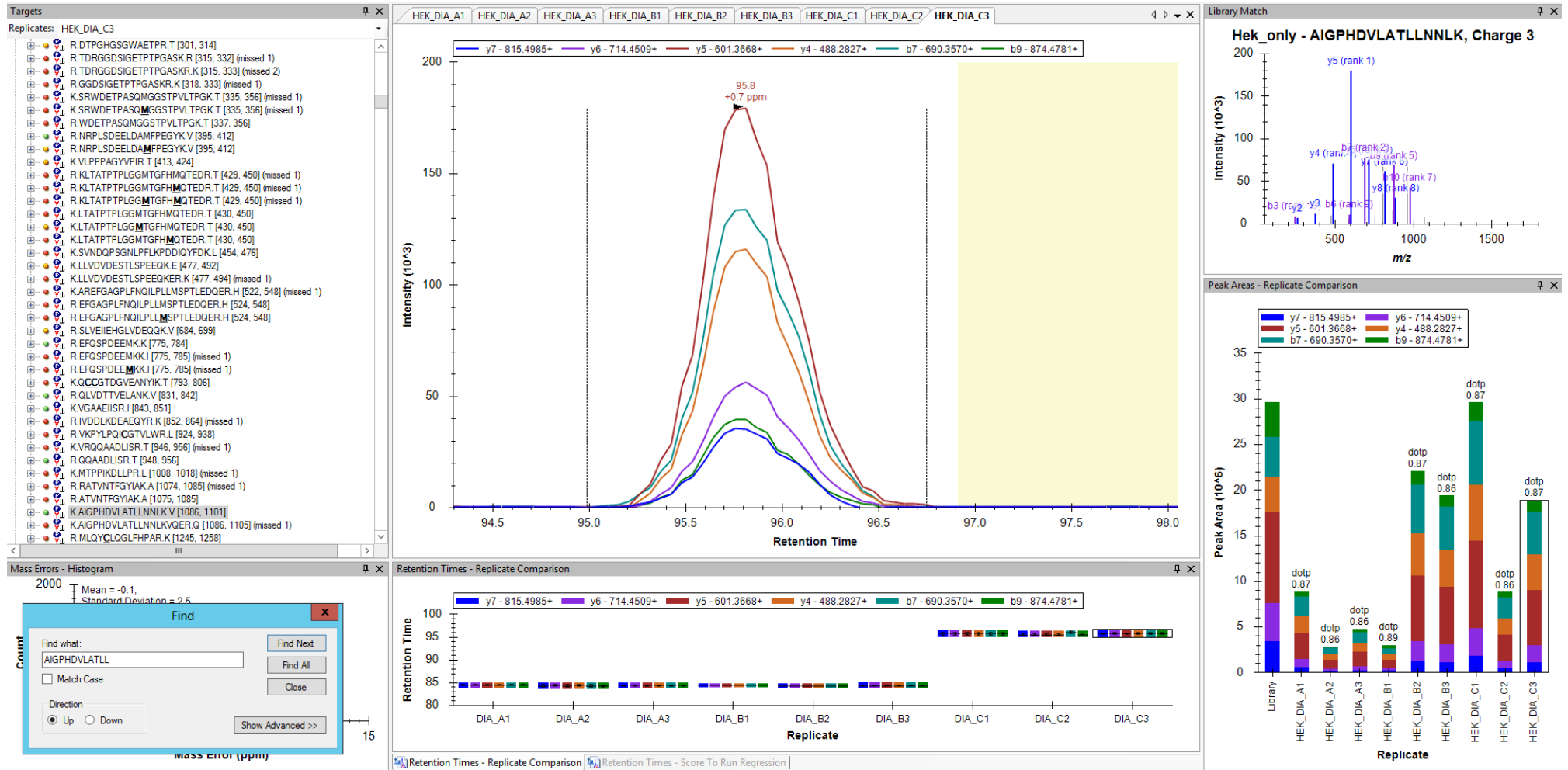
OK Cancel

| Method | Replicate | No proteins | Mean Mean PAP |
|---------------|-----------|-------------|---------------|
| 27 var win | 1 | 3424 | 14.376 |
| | 2 | 3395 | 14.484 |
| | 3 | 3306 | 14.799 |
| + 60 ms IT | 1 | 3327 | 16.007 |
| | 2 | 3366 | 15.983 |
| | 3 | 3422 | 15.867 |
| + longer grad | 1 | 3429 | 15.448 |
| | 2 | 3471 | 15.343 |
| | 3 | 3418 | 15.408 |

Sequence: AIGPHDVLATLLNLIK, Points across peak = 32; y6 ion selected



Sequence: AIGPHDVLATLLNLLK, Points across peak = 32; y6 ion selected



Ready

766/8,661 prot 7,073/162,451 pep 8,390/194,159 prec 47,287/1,095,655 tran

Sequence: LQTSSVLVSGLR, Points Across Peak = 32; y5-ion selected

