

Skyline for Cannabis testing

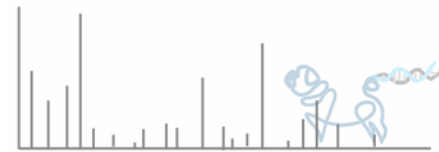
Ben Orsburn

Chief Scientific Officer

Coral Reef Labs



CORALREEFLABS

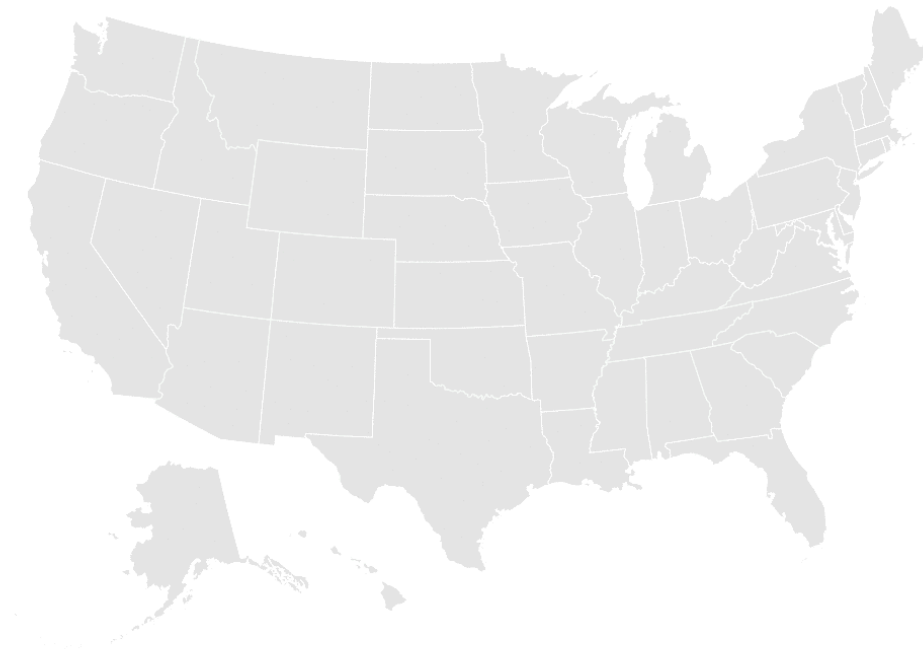


Cannabis laws have been rapidly changing

Legal Status



Legal for Medical Use ■ Legal



115TH CONGRESS
2D SESSION

H. R. 5485

To amend the Agricultural Marketing Act of 1946 to provide for State and Tribal regulation of hemp production, and for other purposes.

IN THE HOUSE OF REPRESENTATIVES

APRIL 12, 2018



Cannabis testing is big for small businesses

- Big corporations won't risk federal laws

US Cannabis Testing Services Market to Surpass US\$ 409.3 Million By 2027 – Coherent Market Insights

December 17, 2019 11:43 AM Eastern Standard Time

SEATTLE--(BUSINESS WIRE)--According to Coherent Market Insights, the US Cannabis Testing Services Market was valued at US\$ 127.7 million in 2019, and is expected to exhibit a CAGR of 15.7% over the forecast period (2019 – 2027).

....opening the door for small businesses

State laws vary, but cannabis is tested for

- Heavy metals (ICP-MS)
- Pesticide residues (GC-MS or LC-MS)
- Microbial contamination (plating, qPCR, “next gen” sequencing)
- Residual solvents (GC-MS)
- Terpenes and cannabinoid content (GC-MS and/or LC-MS)
- A lot of work
- A lot of equipment
- But at \$300-\$1,000 per sample....

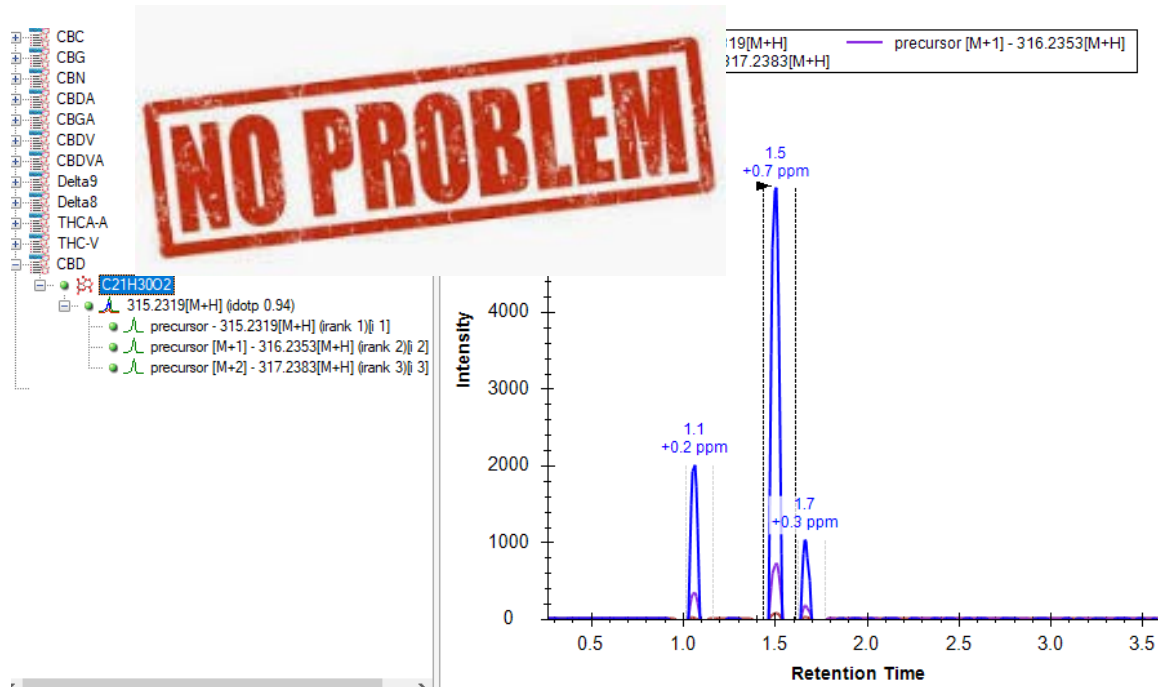


Data integration?

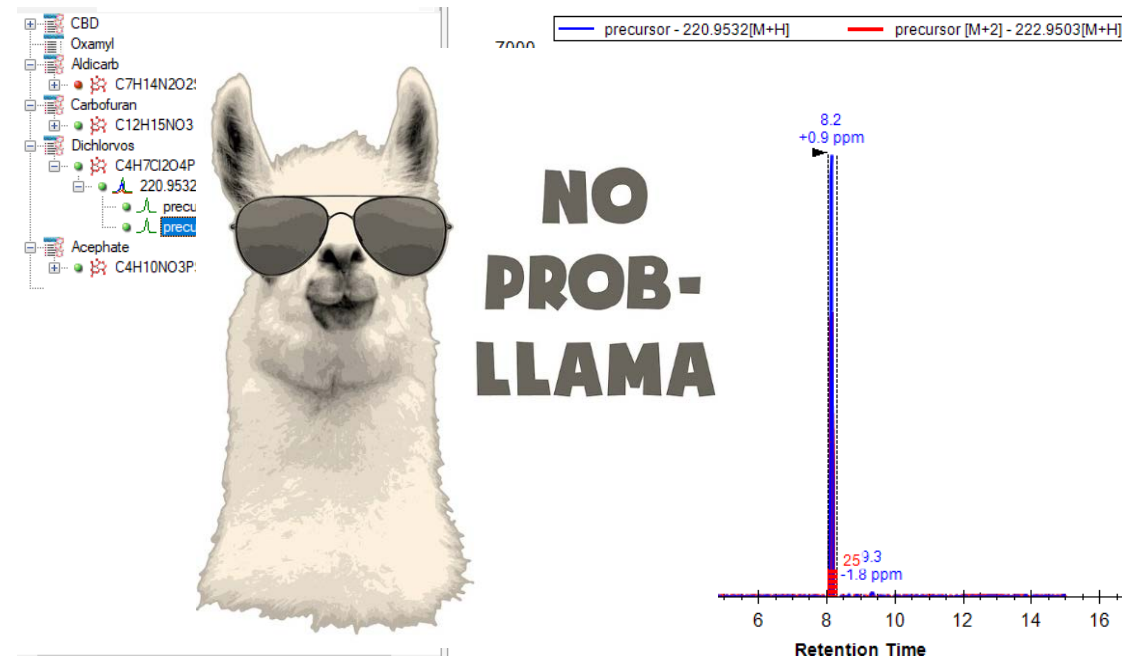
- Could you use Skyline for everything?



Cannabinoids?

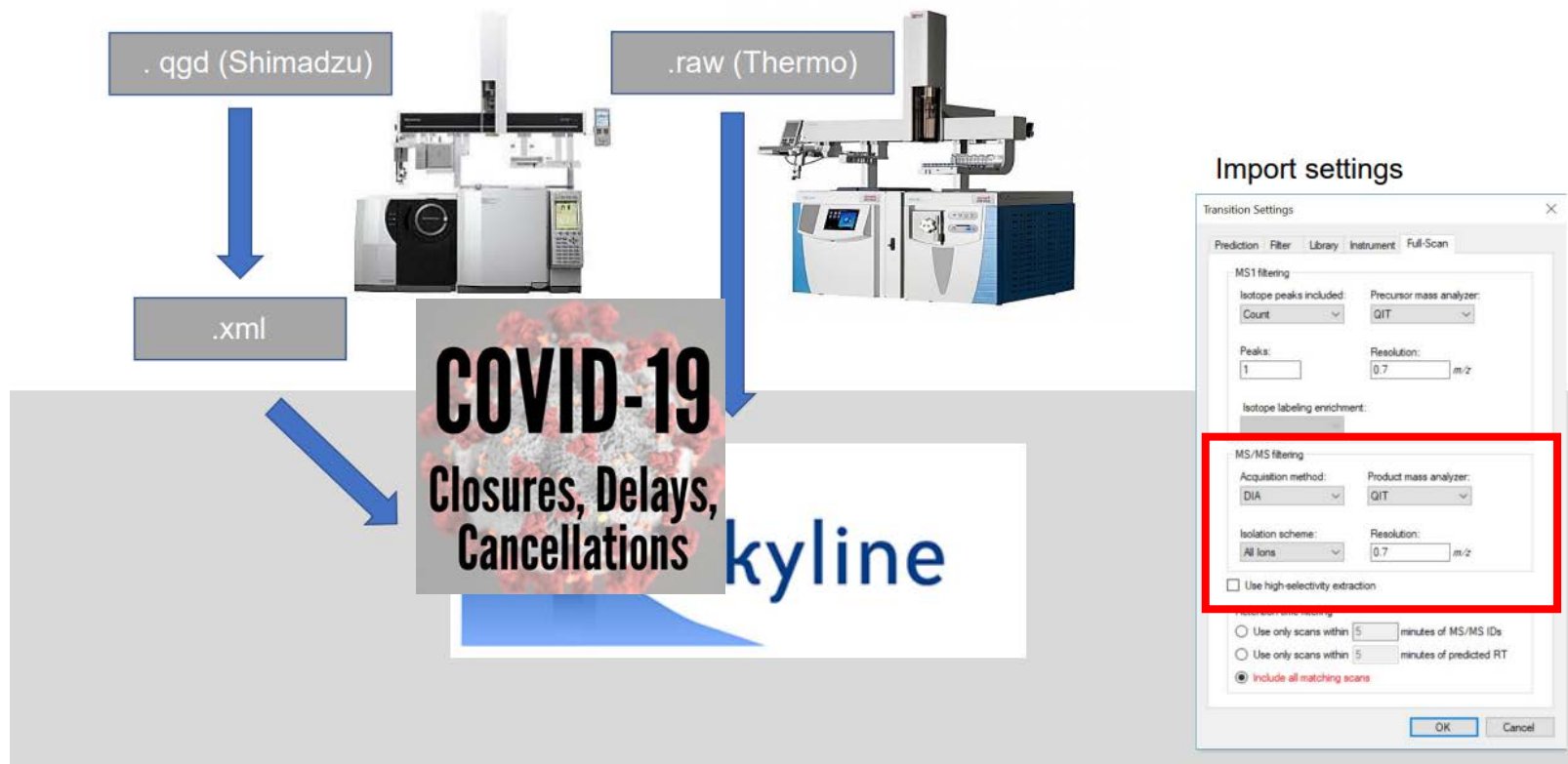


Pesticide residues?



GCMS Integration....

Importing GCMS data



(Stolen from Pawel Sadowski's talk here last year)

Summary

- Skyline could be a great solution for cannabis testing because:
 - Almost all vendor instruments (except Perkin-Elmer) work!
 - Integrated QC!
 - Sophisticated quantification!
 - Plus you already know it!
- Thanks for listening!
- Questions?
- Distraction →

