

# Welcome!

## Skyline Users Meeting 2015 St. Louis



**Agilent Technologies**



**BRUKER**



**SCIEX**



**SHIMADZU**



**Thermo**  
SCIENTIFIC



Waters  
THE SCIENCE OF WHAT'S POSSIBLE.™



Cambridge  
Isotope  
Laboratories  
CIL



LabKey Software™  
PARTNERS IN SCIENCE

# Skyline Team



**Brendan MacLean**  
**Principal Developer**



**Brian Pratt**  
**Developer**



**Nick Shulman**  
**Developer**



**Don Marsh**  
**Developer**



**Vagisha Sharma**  
**Developer - Panorama**



**Kaipo Tamura**  
**Developer**



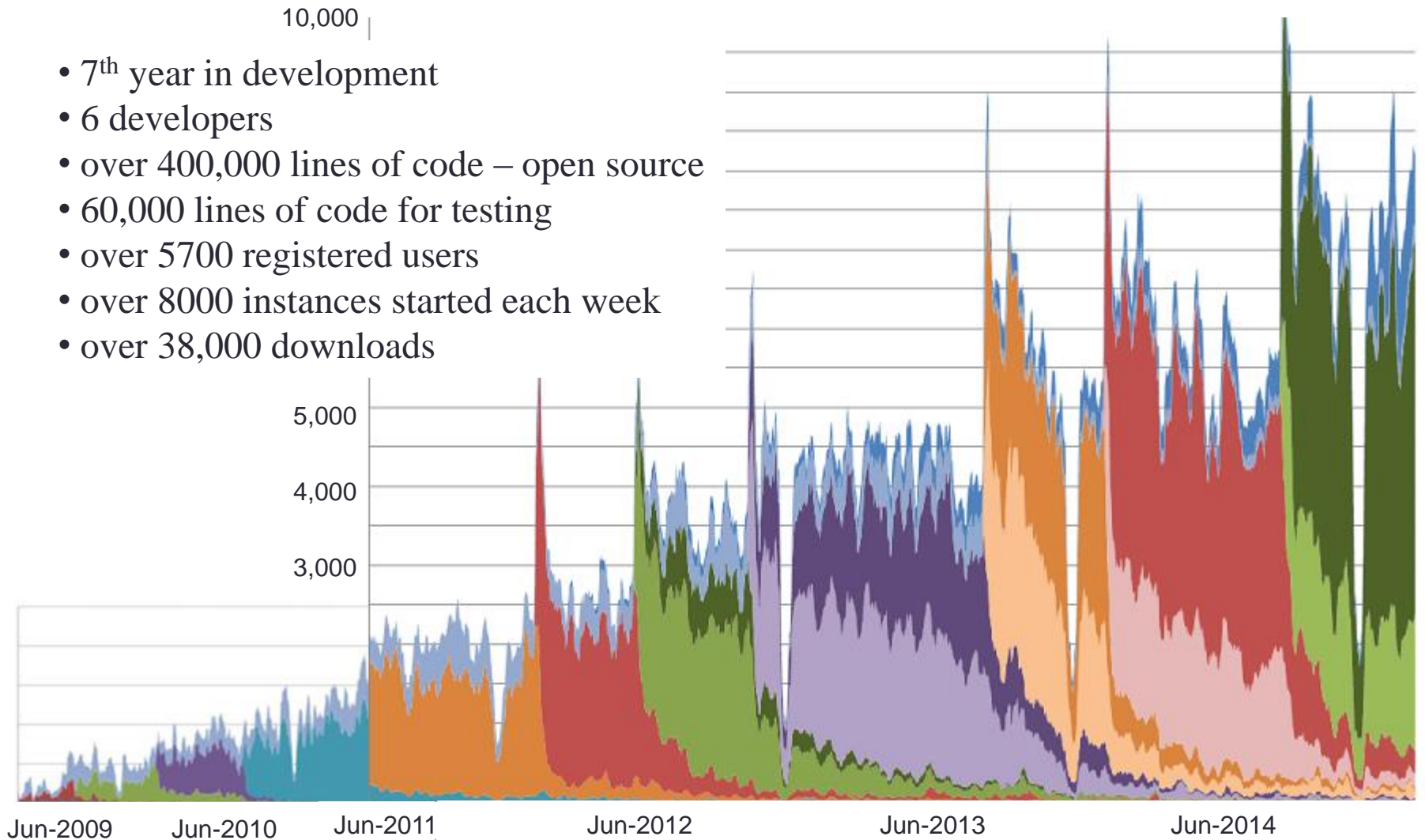
**Nat Brace**  
**Project Manager**



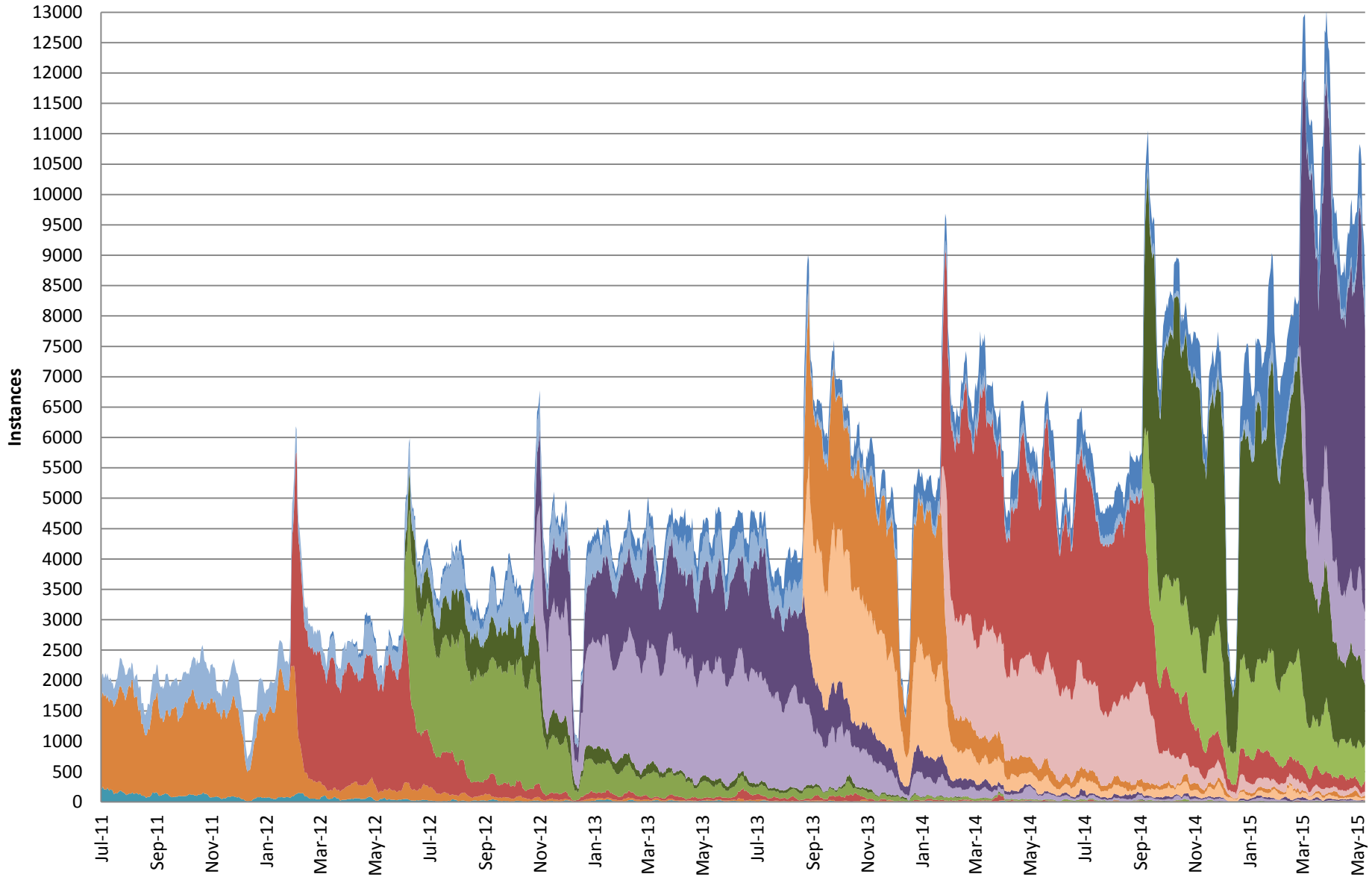
**Yuval Boss**  
**Developer Intern**

# Skyline Project Overview

- 7<sup>th</sup> year in development
- 6 developers
- over 400,000 lines of code – open source
- 60,000 lines of code for testing
- over 5700 registered users
- over 8000 instances started each week
- over 38,000 downloads



# 7-day Trailing Instances



# Skyline Development Federal Support

- **NIH/NIGMS: Skyline Targeted Proteomics Environment**
  - R01 GM103551 (PI: MacCoss)
- **NIH/NIGMS: Comprehensive Biology: Exploiting the Yeast Genome**
  - P41 GM103533 (PI: Davis)
- **NIH/NIGMS: Self Correcting Nanoflow LC-MS for Clinical Proteomics**
  - R01 GM107806 (PI: MacCoss)
- **NIH/NCI: Accelerated Protein Signatures**
  - U01 CA164186 (MPI: Jaffe and MacCoss)

# Skyline Instrument Vendor Support



**Agilent Technologies**



**BRUKER**



**SCIEX**



**SHIMADZU**

**Thermo**  
S C I E N T I F I C

Waters

THE SCIENCE OF WHAT'S POSSIBLE.™

# Today's speakers



**Michael MacCoss** – MacCoss Lab, University of Washington



**Tom Dunkley** – Roche



**Martin Soste** – Picotti Lab, ETH Zurich



**James Bollinger** – MacCoss Lab, University of Washington



**Sam Payne** – Pacific Northwest National Lab



**Chris Shuford** – LabCorp

\*\*\* Break\*\*\*

# Today's speakers



**Erin Baker** – Pacific Northwest National Lab



**Laura G. Dubois** – Moseley Lab, Duke University



**Sonia Ting** – MacCoss Lab, University of Washington



**Bruno Domon** – Luxembourg Clinical Proteomics Center



**Brendan MacLean** – MacCoss Lab, University of Washington

\*\*\* Close\*\*\*