

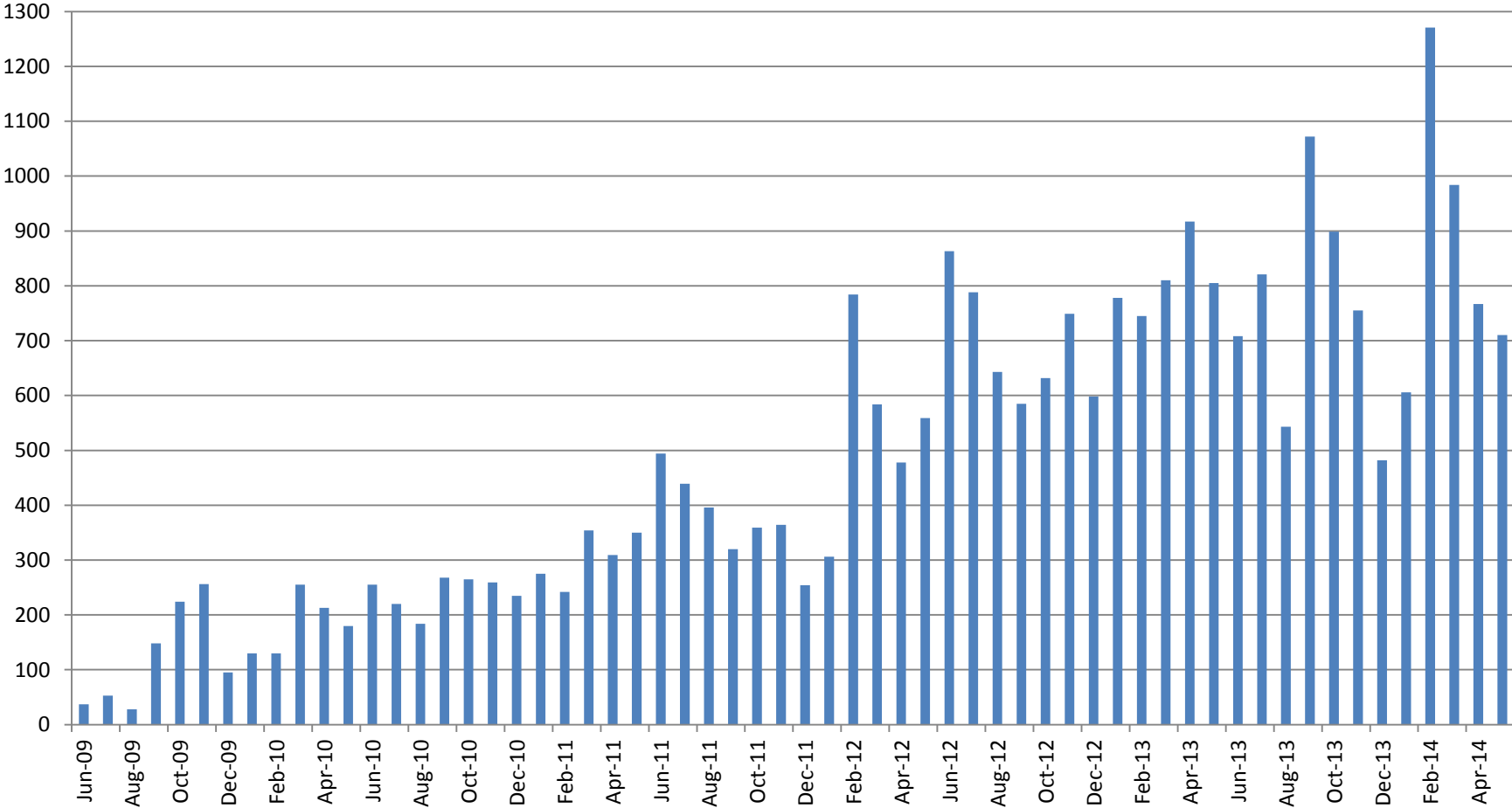
Welcome!

Skyline Users Meeting 2014 Baltimore



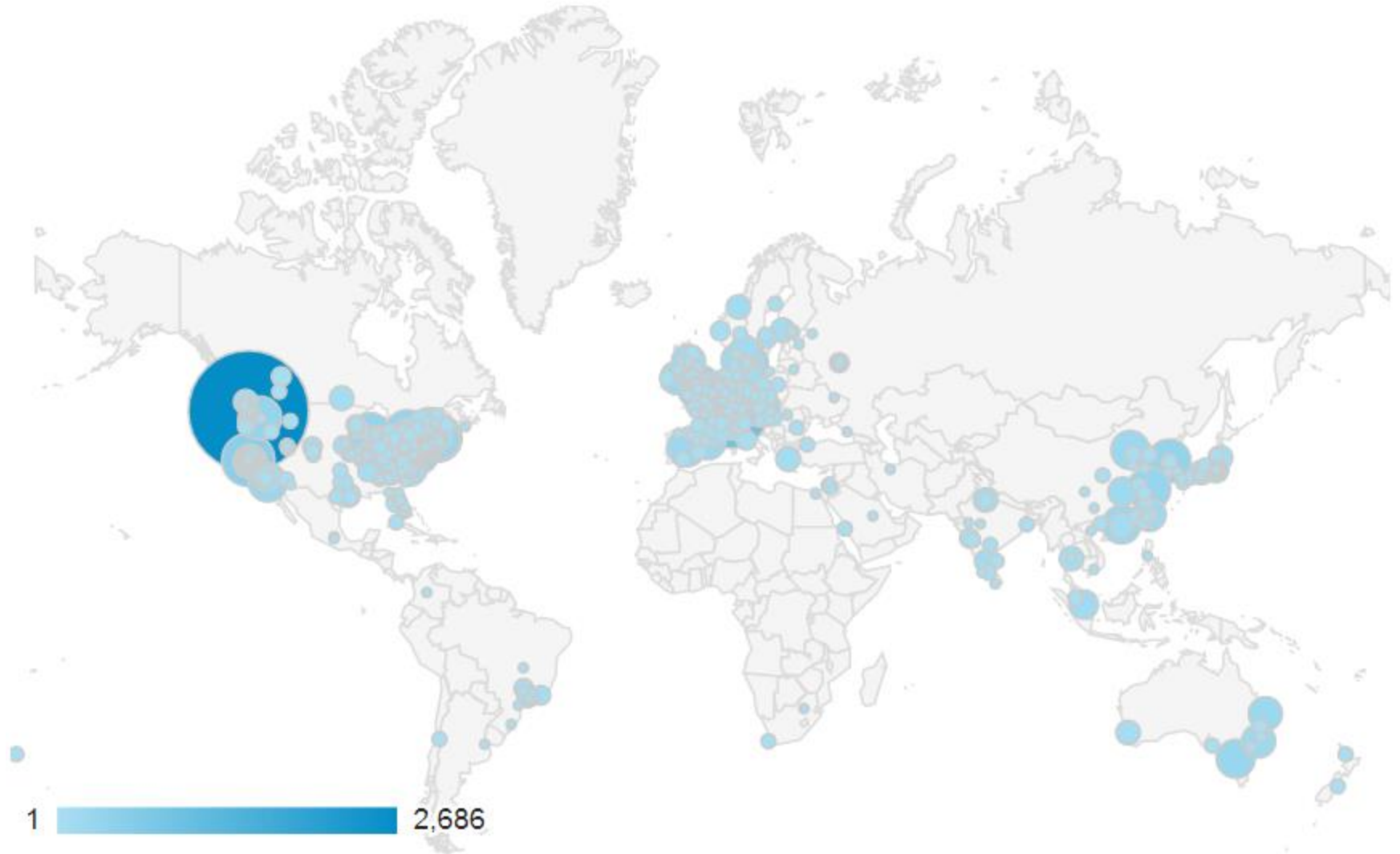
Over 29,000 Skyline Installations

New Skyline Installations by Month



>350 citations

Skyline Web Site Visits (past 6 months)



Skyline Development Federal Support

- **NIH/NIGMS: Skyline Targeted Proteomics Environment**
 - R01 GM103551 (PI: MacCoss)
- **NIH/NIGMS: Comprehensive Biology: Exploiting the Yeast Genome**
 - P41 GM103533 (PI: Davis)
- **NIH/NIGMS: Self Correcting Nanoflow LC-MS for Clinical Proteomics**
 - R01 GM107806 (PI: MacCoss)
- **NIH/NCI: Accelerated Protein Signatures**
 - U01 CA164186 (MPI: Jaffe and MacCoss)

Skyline Development Vendor Support



Agilent Technologies



BRUKER



SHIMADZU



Thermo

SCIENTIFIC

Waters

THE SCIENCE OF WHAT'S POSSIBLE.™



AB SCIEX

Coming in 2015